

# Colourmass

*Featuring a unique blend of neon pastel shades.*



DAMAS  
LAMINATES®



# Colormass

*Featuring a unique blend of neon pastel shades.*



Colormass is a collection from Damas Laminates that defines a cohesive color mass for surfaces and spaces. This collection remains versatile across environments, from commercial installations to home interiors, ensuring consistency and recognition. Subtle variations within the mass add depth and texture while preserving clarity and calm. The result is a dependable, timeless palette that supports usability, communicates Damas Laminates' values, and guides design decisions with confidence.

---



# Colourmass

*Featuring a unique blend of neon pastel shades.*

DAMIAS   
LAMINATES®

---

An elegant design phenomenon that transforms your spaces with an ebullient verve of trendsetting ideas for a charismatic makeover and mesmerizing appeal.



# about damas

---

Damas Laminates is a leading manufacturer of decorative laminates specializing in innovative designs, superior surface finishes, and durable products for furniture and interiors. With a focus on precision and sustainability, we ensure consistent performance across a wide range of aesthetics, and our facilities combine advanced technology with skilled craftsmanship to meet global standards. We offer customized textures, patterns, and thickness options to suit diverse projects, while timely delivery, reliable service, and strong after-sales support are core to our partnerships. We also invest in R&D to expand our eco-friendly, trend-ready portfolio, and you can trust Damas Laminates for value, consistency, and exquisite finishes that elevate spaces.

# finish Index



01 OMBRE  
page no. 07-09

02 TEQNO  
page no. 11,23,33,35,61,64,69

03 SUPER MATT  
page no. 12-13,78-81

04 SUPER HIGH GLOSS  
page no. 14,15,82-85

05 ACOUSTIC  
page no. 16-17

06 FLORINO  
page no. 18-19

07 MICRO FLUTE  
page no. 20

08 ACRYNO  
page no. 21

09 HORIZONTAL LINE  
page no. 24

10 FOIL  
page no. 24

11 TRIO  
page no. 25

12 FURROW  
page no. 26

13 ROYAL STONE  
page no. 27

14 PARKER  
page no. 28

15 VALLEY  
page no. 29

16 ROYAL CHANNEL  
page no. 30

17 VERTICO  
page no. 31

18 CLOUDY GREY  
page no. 34

19 PASTEL GREEN  
page no. 36

20 SAGE GREEN  
page no. 37

21 SAND BROWN  
page no. 38

22 POMELO OLIVE  
page no. 39

23 CHIC BEIGE  
page no. 40

24 BREEZE  
page no. 41

25 MILKY WHITE  
page no. 42-43

26 LOTO GREEN  
page no. 44

27 WATER GREEN  
page no. 45

28 SMOKE GREY  
page no. 46

29 LATTE BROWN  
page no. 47

30 SUBTLE DOVE  
page no. 48

31 BLUSH PINK

page no. 49

32 PERIWINKLE LAVENDAR

page no. 49

33 CLEAN BEIGE

page no. 50

34 SIDEWALK GREY

page no. 51

35 WARM TAN

page no. 51

36 PERCIOUS PEARL

page no. 52

37 PORPOISE GREY

page no. 53

38 METAL GREY

page no. 54

39 CHARCOAL GREY

page no. 55

40 FOG GREY

page no. 56

41 ANCHOR GREY

page no. 57

42 PEWTER GREY

page no. 58

43 KHAKI BROWN

page no. 59

44 ROSE BEIGE

page no. 60

45 BARLEY

page no. 60

46 ALMOND BROWN

page no. 62

47 SQUASH ORANGE

page no. 63

48 BABY BLUE

page no. 65

49 SEAFOAM GREEN

page no. 66-67

50 PECAN BROWN

page no. 68

51 DESERT TAUPE

page no. 68

52 PRUSSAIN BLUE

page no. 70

53 PEBBLE GREY

page no. 71

54 SOOTHING MAUVE

page no. 72

55 OCEAN BLUE

page no. 72

56 JUNGLE GREEN

page no. 73

57 FLAXEN YELLOW

page no. 73

58 BLACK

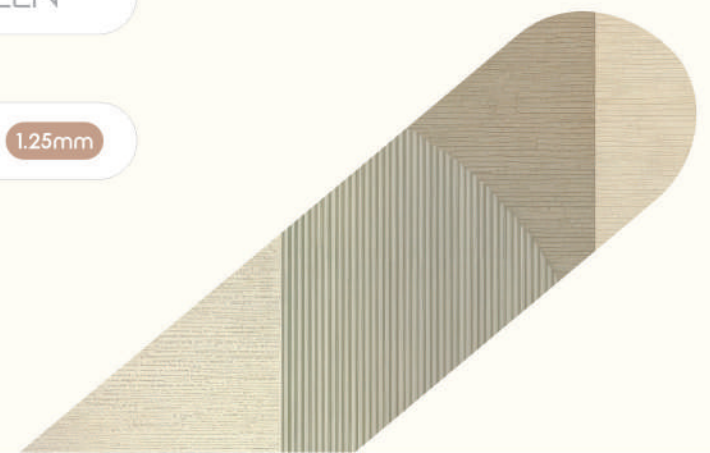
page no. 74


59 SEAWEED GREEN

page no. 75

60 ROYAL FLUTE 1.25mm

page no. 76-77



TRENDING  
DESIGNS  
THAT   
ELEVATE



# Ombre

The color feel  
is calm and  
balanced across  
spaces inviting  
restful mood.



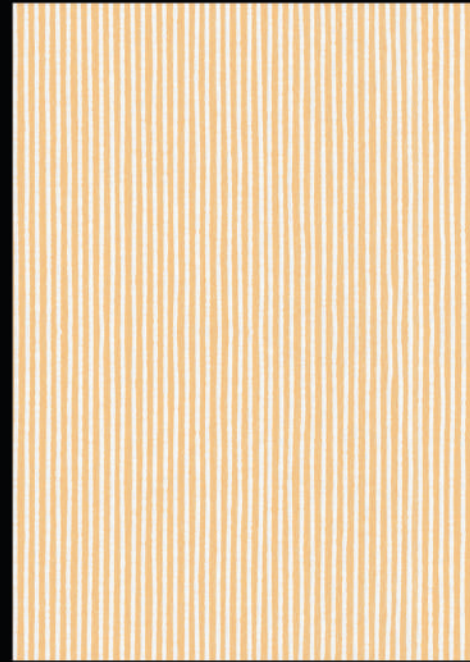
01 OMB | MINT OMBRE



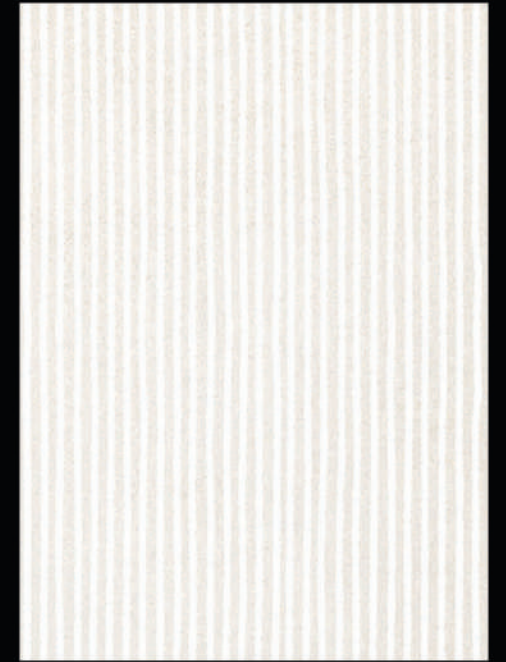
237 SGL | SAGE GREEN



# Ombre



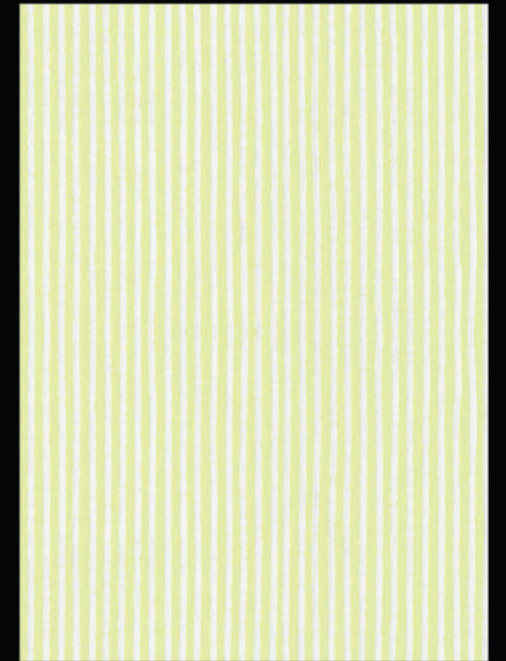
02 OMB | ORANGE OMBRE



03 OMB | BEIGE



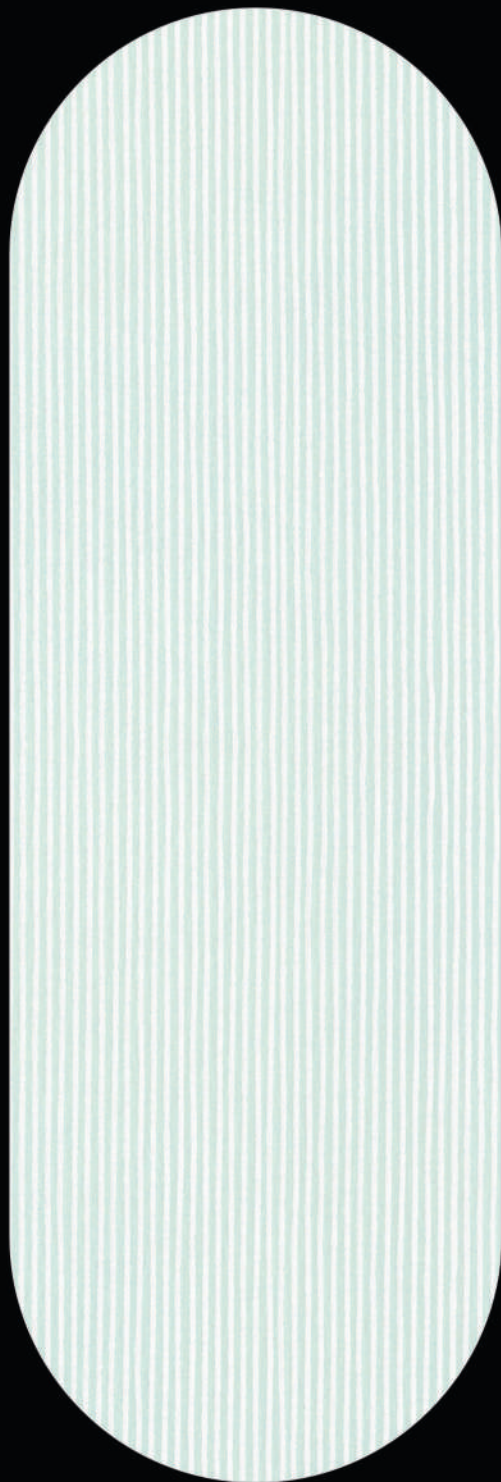
04 OMB | PINK OMBRE



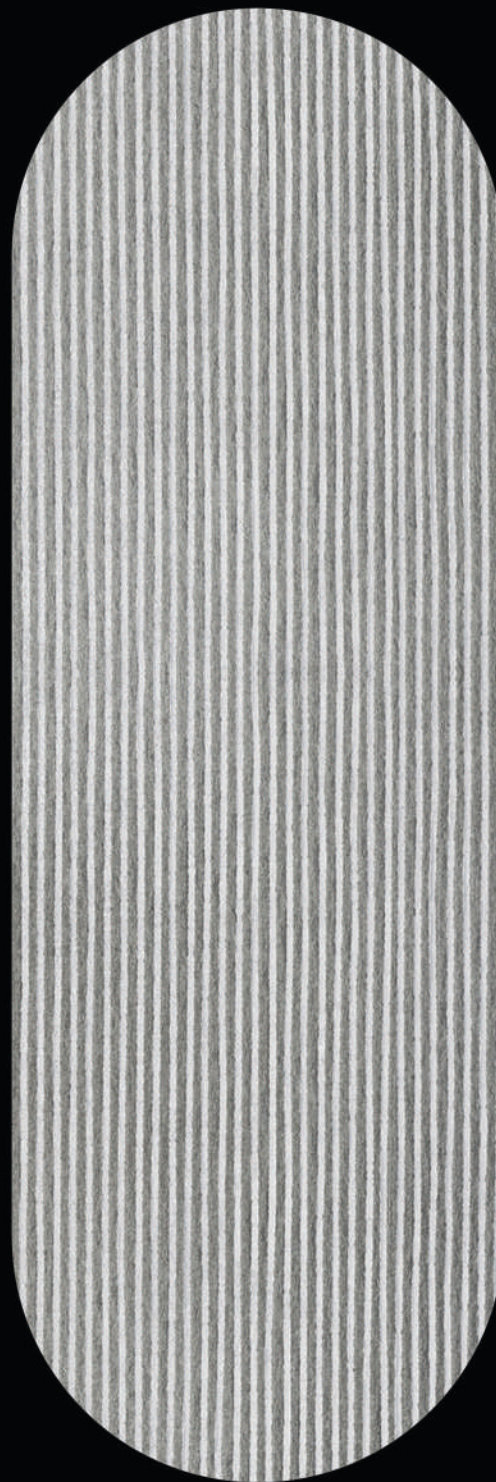
05 OMB | NEON OMBRE

# A PHENOMENON OF INIMITABLE STYLE

A gentle hue creates a quiet  
backdrop that supports other  
elements without competing  
for attention.



06 OMB | POWDER BLUE



07 OMB | GREY





GLORIOUS  
REALM  
OF ———  
SWANKY  
PATTERNS

Subtle color  
variation adds  
depth soft shifts  
keep surfaces  
interesting while  
staying  
understated.



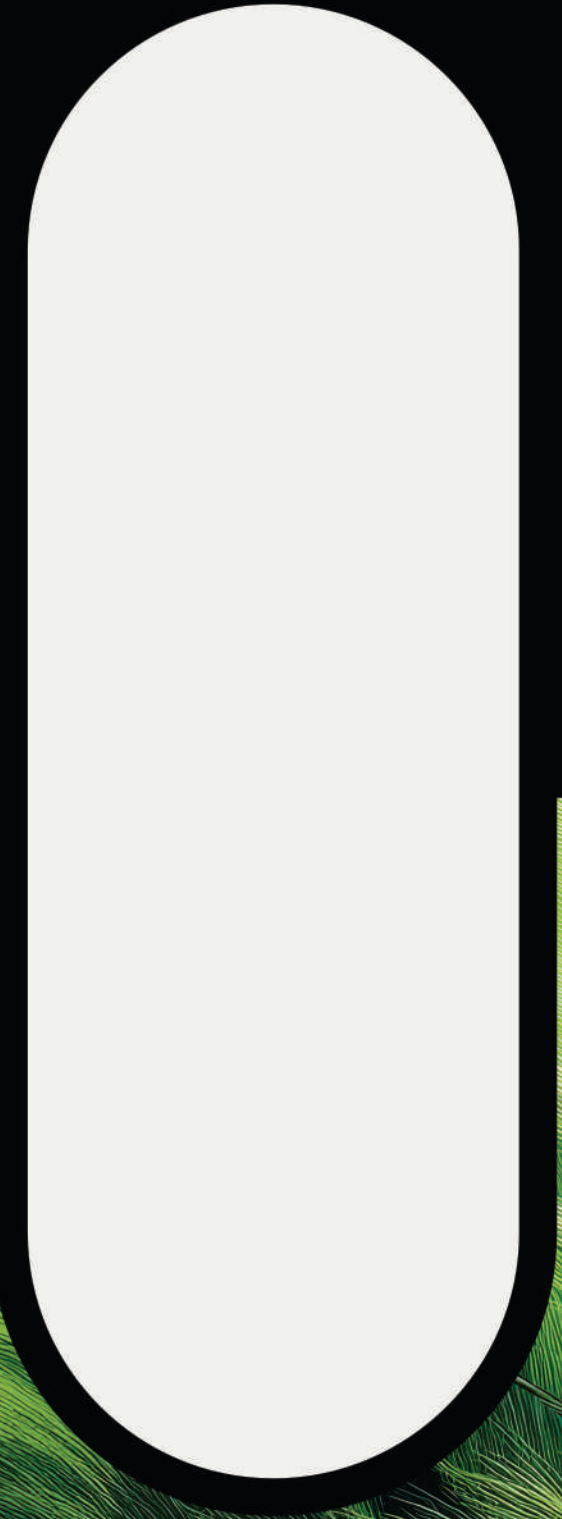
749 SMT | NADAL LEAF

211 SMT | PEWTER GREY

# Super Matt

NEOnMASS

242 SMT | CLOUD GREY



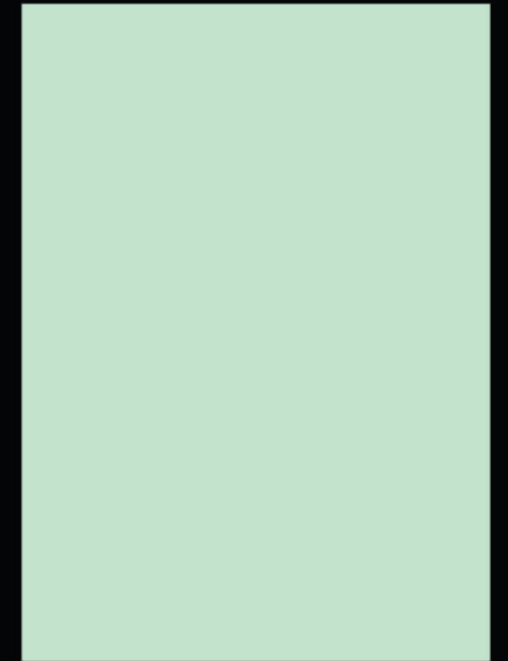
LAVISH  
DESIGNS  
FOR —  
SNAZZY  
INTERIORS



240 SMT | CHIC BEIGE



239 SMT | BREEZE



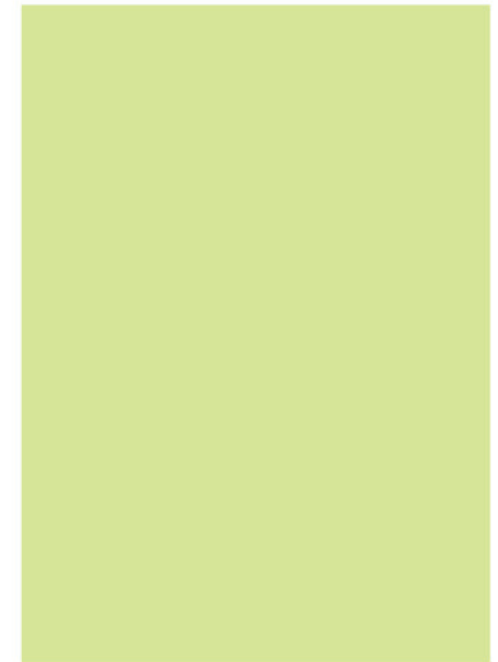
237 SMT | SAGE GREEN



The palette supports easy coordination with furniture and textiles across rooms.



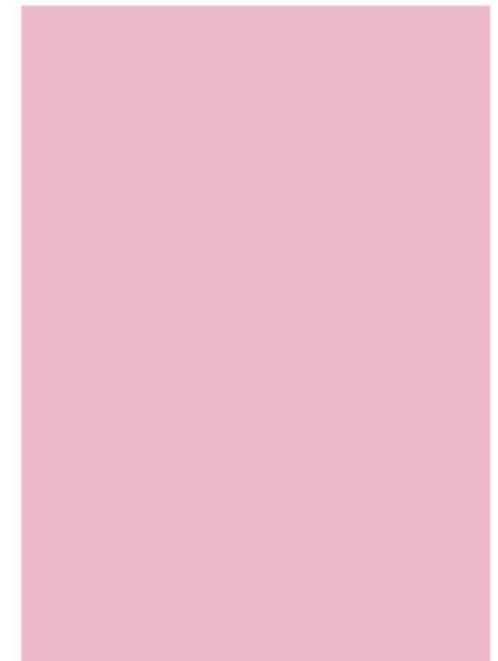
238 SMT | PASTEL GREEN



236 SMT | POMELO OLLIVE



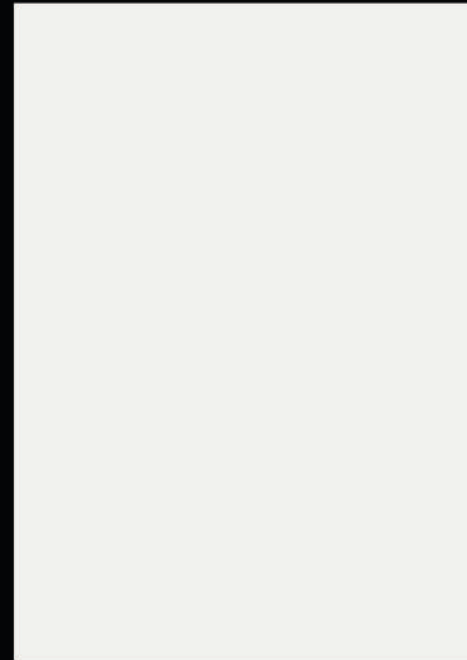
241 SMT | SAND BROWN



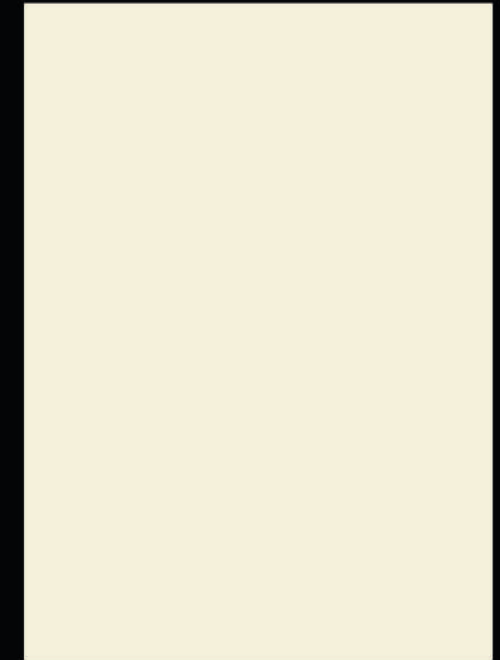
243 SMT | BLUSH PINK



# Super High Gloss



242 SGL | CLOUD GREY



240 SGL | CHIC BEIGE



239 SGL | BREEZE



Warmth comes from soft tones providing a welcoming atmosphere in daily living areas.

NEOnMASS



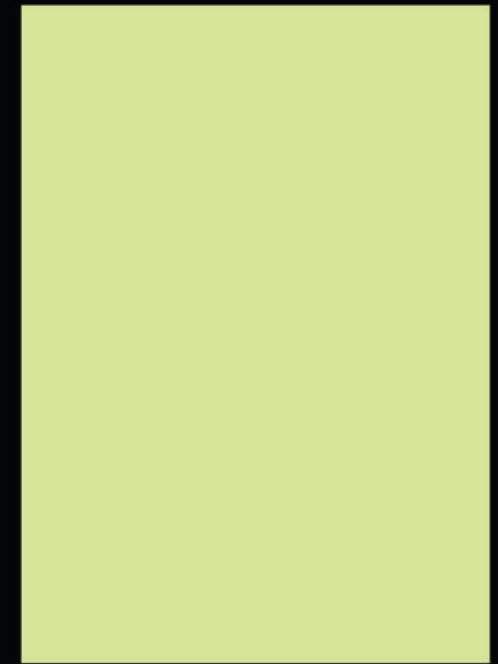
PANACHE  
STYLE  
THAT  
ENTICES



237 SGL | SAGE GREEN



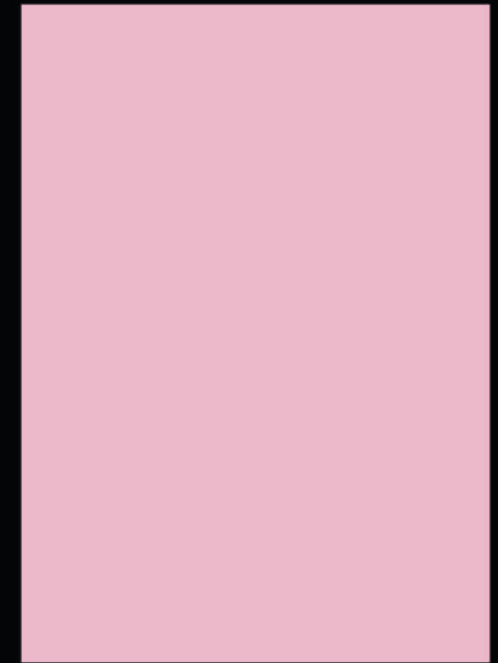
238 SGL | PASTEL GREEN



236 SGL | POMELO OLLIVE

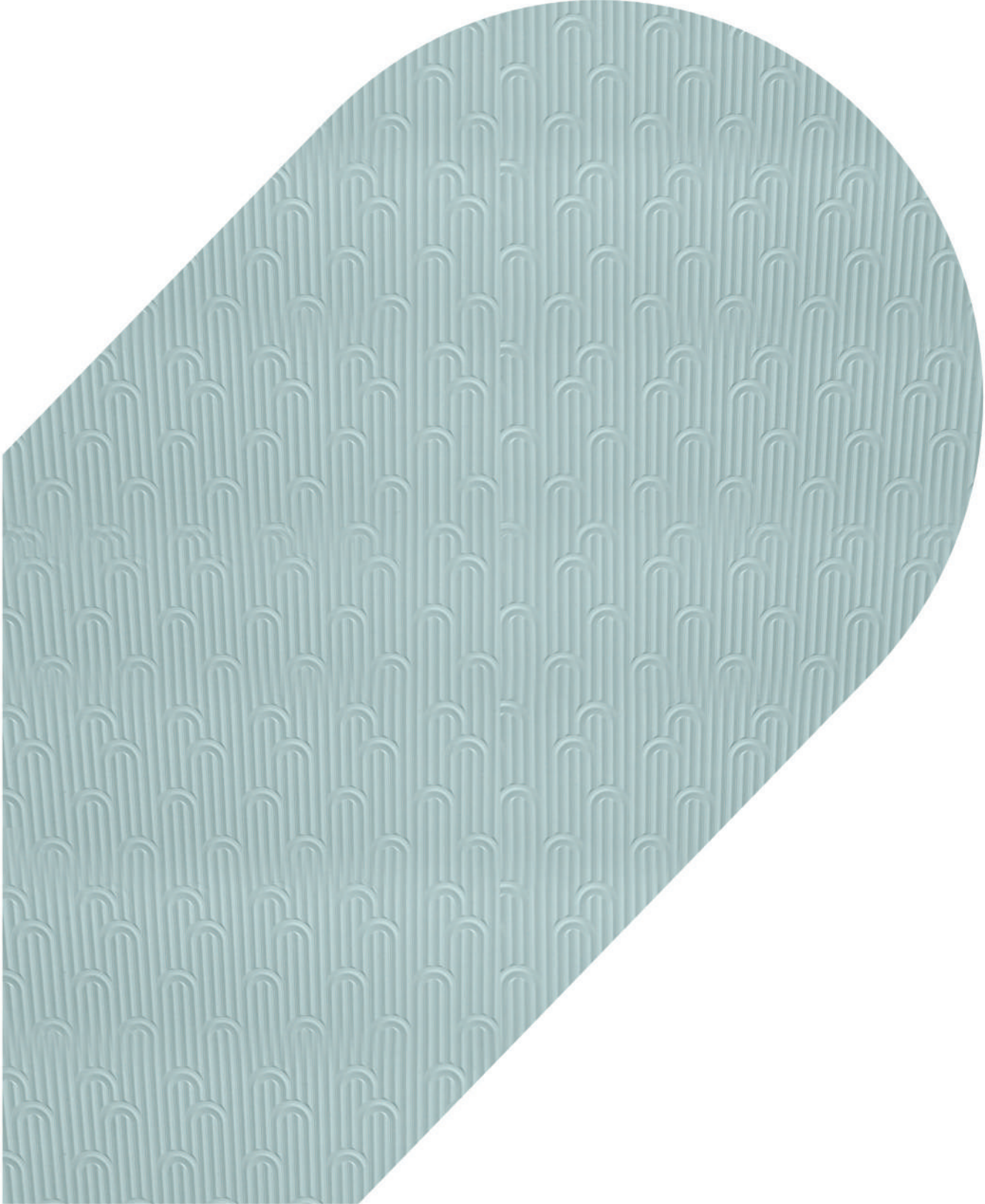


241 SGL | SAND BROWN



243 SGL | BLUSH PINK

Acoustic



239 ACT | BREEZE



# A Statement of            Unmatched Elegance

An easy, relaxed color story  
made for enduring comfort.





240 ACT | CHIC BEIGE 



241 ACT | SAND BROWN 

# SPLENDID PATTERNS OF FLAMBOYANCE

16  
17

Feel the vivacious verve  
of hues that exude eminent  
grace and glamour.

Florino

WE LIVE  
UPTO YOUR  
DESIGN —  
EXPECTATIONS

The overall color mood  
is soothing easy to  
relax into suitable  
for long stays.



237 FLR | SAGE GREEN 



238 FLR | PASTEL GREEN 



A Master  
piece  
of ———  
Unrivalled  
Design

The color palette feels  
gentle and calming,  
inviting effortless  
relaxation over time.

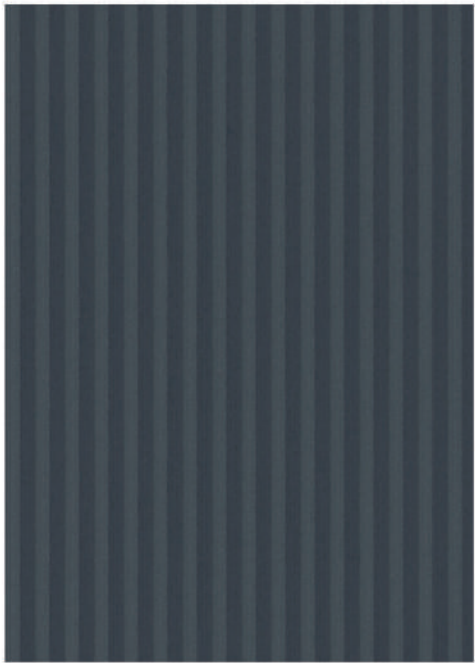
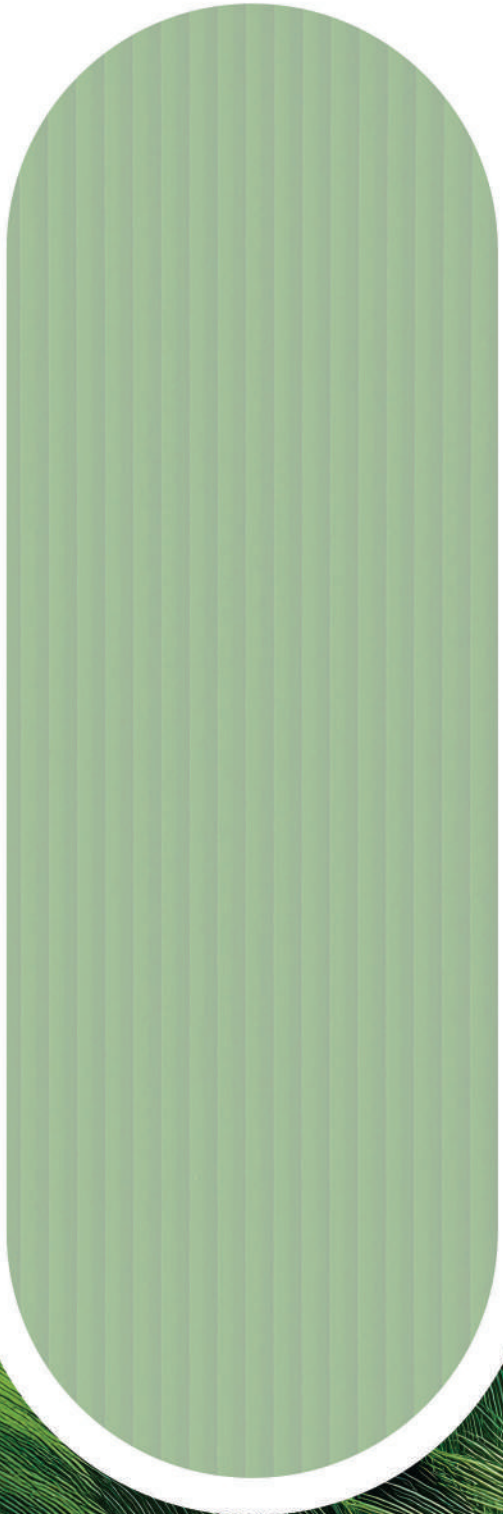
18  
19



# Micro Flute



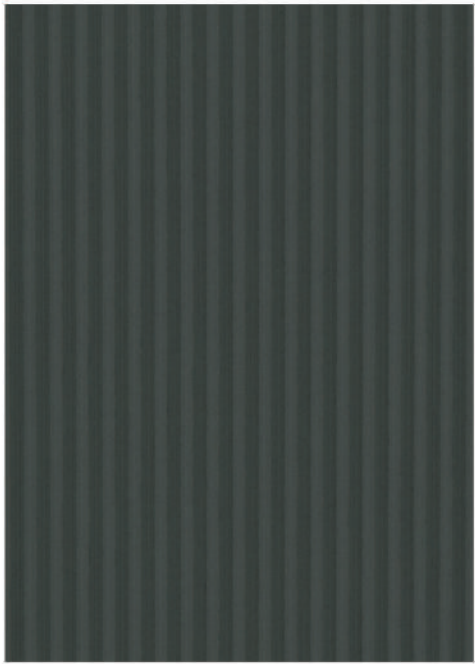
229 MRF | LOTO GREEN



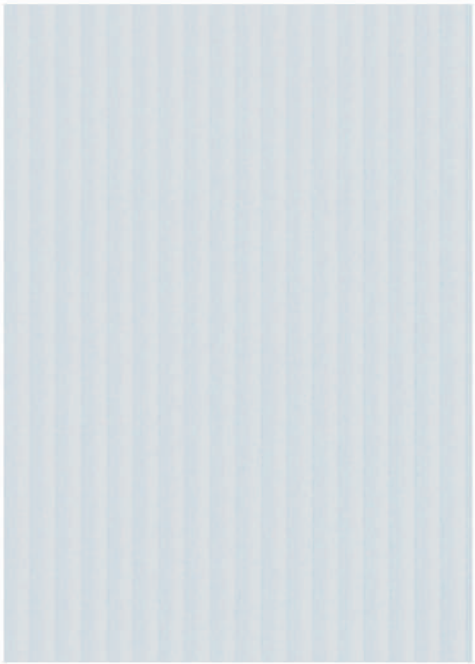
227 MRF | BABY BLUE



133 MRF | BARLEY



107 MRF | ANCHOR GREY



101 MRF | WINTER WHITE





421 ACR | BRIGHT WHITE



422 ACR | ARABIAN SAND



427 ACR AIR FORCE BLUE



428 ACR | MIDNIGHT



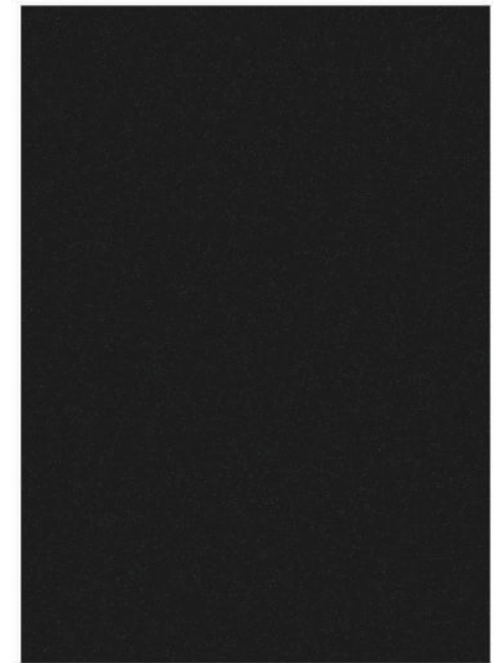
423 ACR | THUNDER GREY



424 ACR | GALACTIC GREY



426 ACR | OCEAN



425 ACR | ASH GREY

BOHEMIAN  
DESIGN  
OPTIONS  
UNFOLD





Color comfort helps spaces relax reducing visual fatigue for calm interiors.

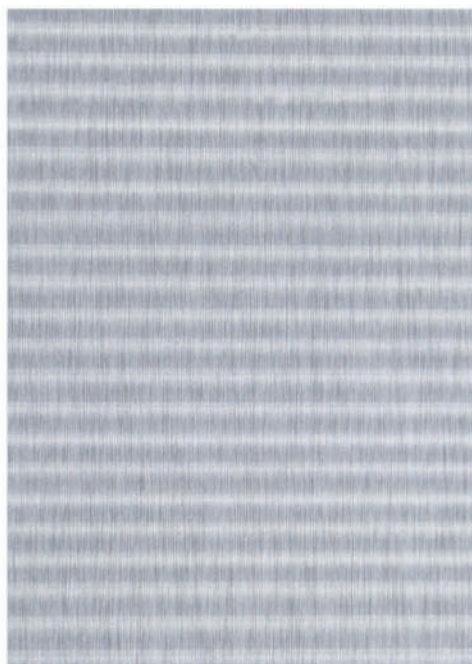
22  
23

215 SMT | DESERT TAUPE

# Horizontal Line



02 HLT | BRONZE FOIL

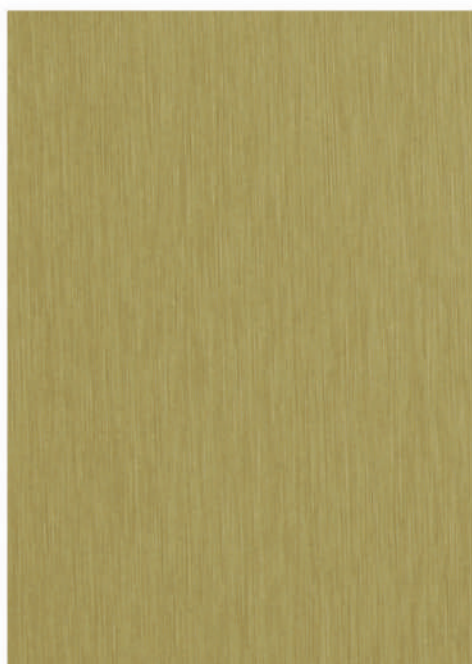


01 HLT | SILVER FOIL



foil

CURATED TO  
MESMERIZE  
AND ENTICE



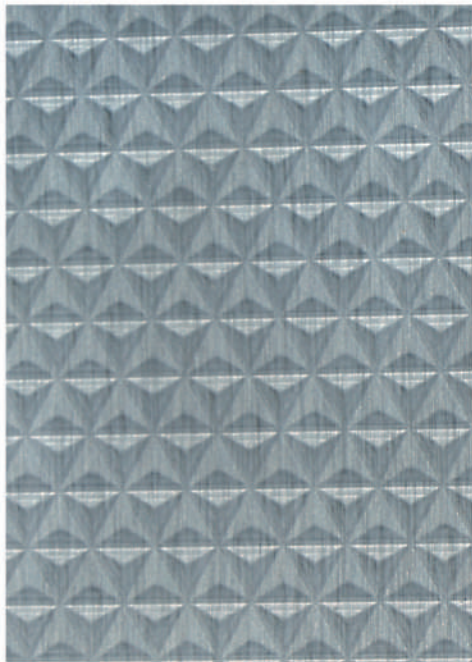
03 MT | GOLD FOIL



01 MT | SILVER FOIL



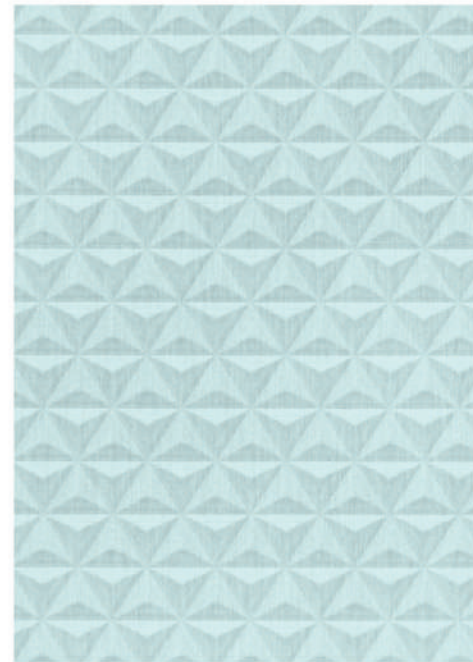
02 MT | BRONZE FOIL



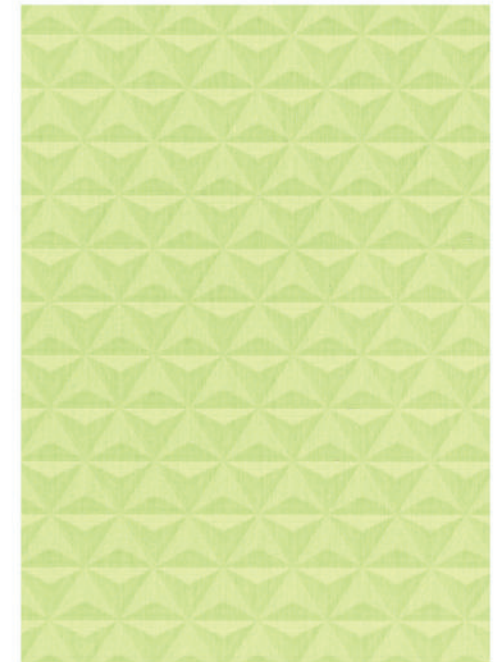
01 TRY | SILVER FOIL



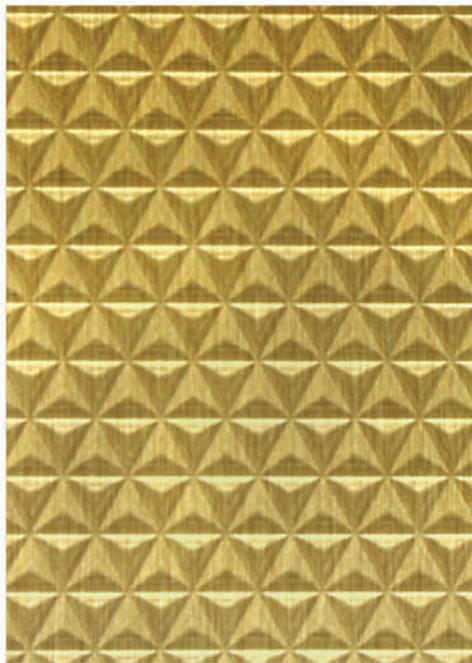
02 TRY | BRONZE FOIL



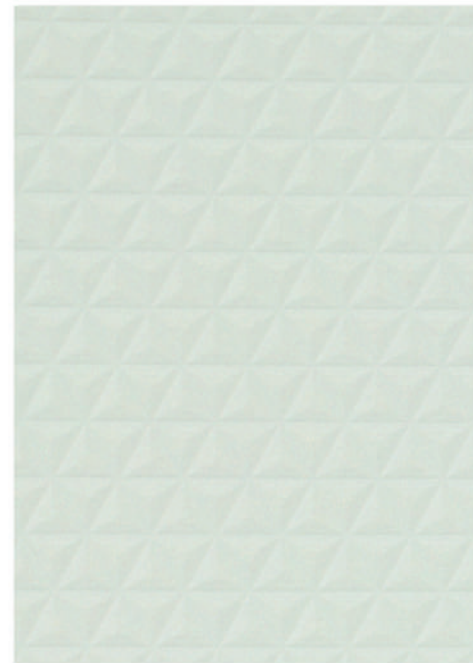
239 TRY | BREEZE



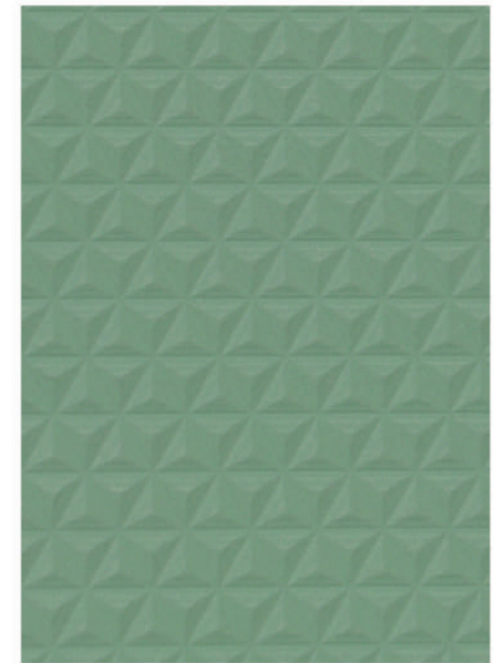
236 TRY | POMELO OLLIVE



03 TRY | GOLDEN FOIL



312 TRY | CLEAN BEIGE



222 TRY | SEAFOAM GREEN



# Furrow



101 FRO | WINTER WHITE



106 FRO | PORPOISE GREY



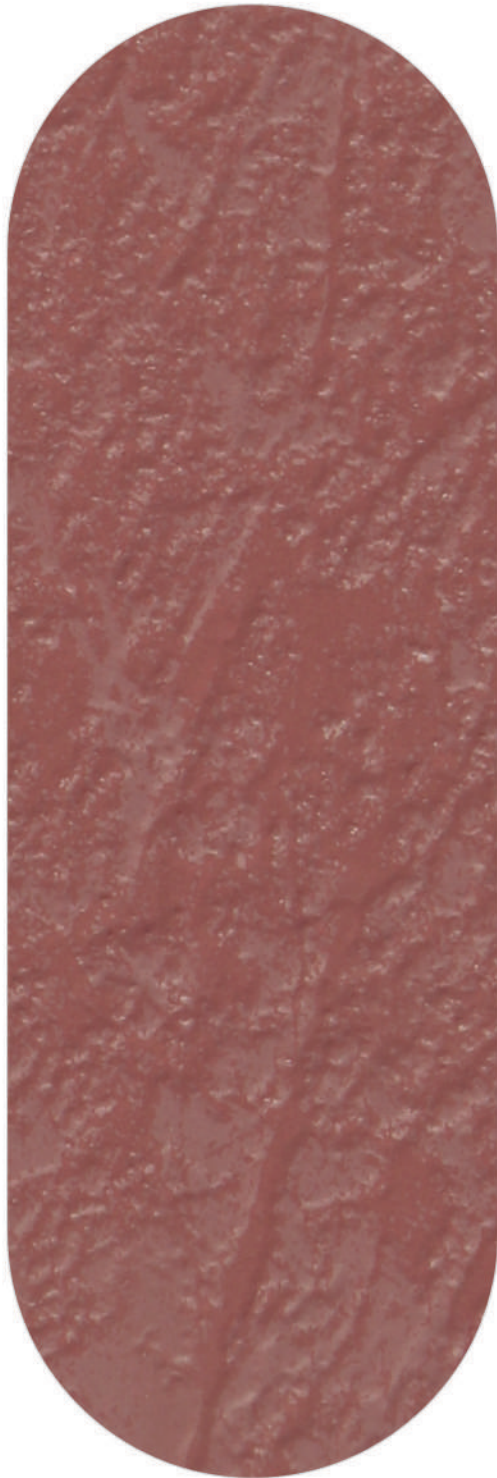
225 FRO | SUBTLE DOVE



218 FRO | ALMOND BROWN



# Royal Stone



213 RS | PECAN BROWN 



215 RS | DESERT TAUPE

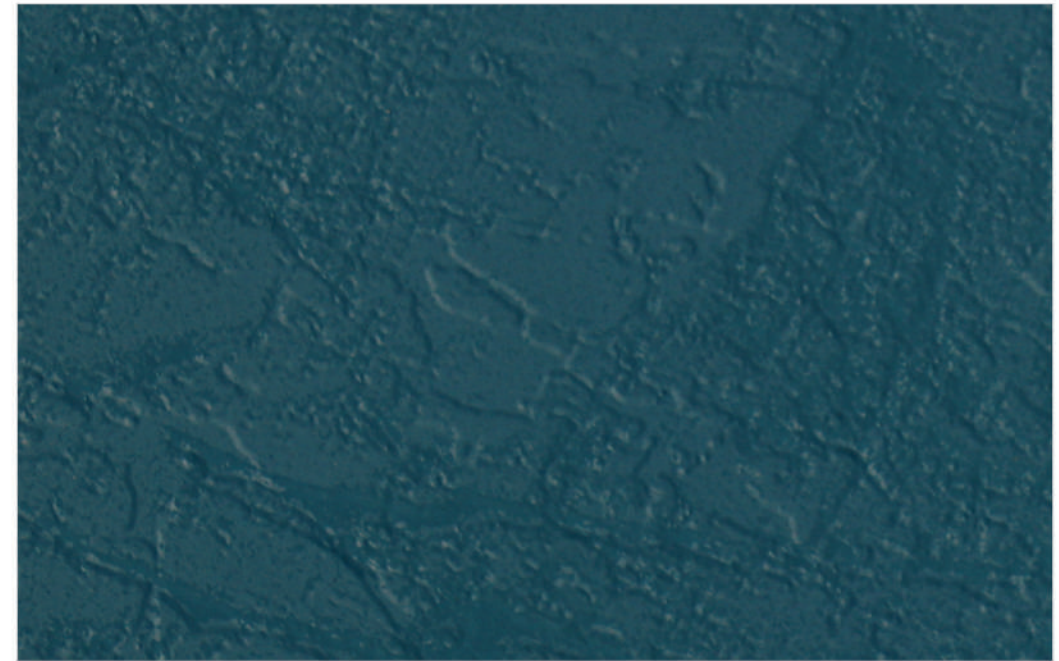


212 RS | SMOKE GREY



## ELEGANT AND — ENCHANTING TEXTURES

A smooth color field stays unobtrusive letting architectural details shine and natural textures remain visible.



214 RS | PRUSSIAN BLUE



# Parker

227 PKR | BABY BLUE 



101 PKR | WINTER WHITE



222 PKR | SEAFOAM GREEN



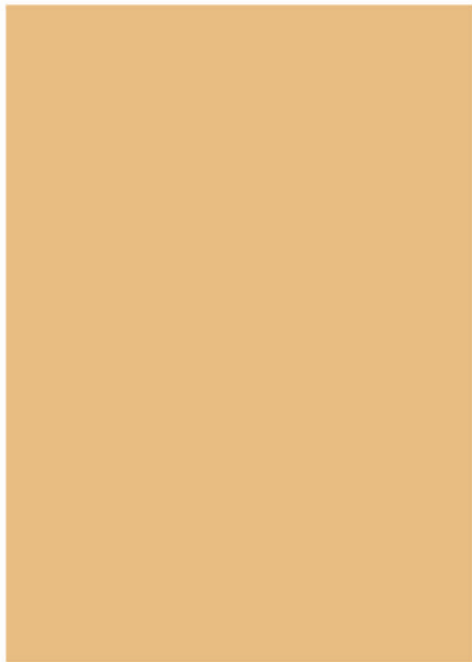
218 PKR | ALMOND BROWN



106 PKR | PORPOISE GREY



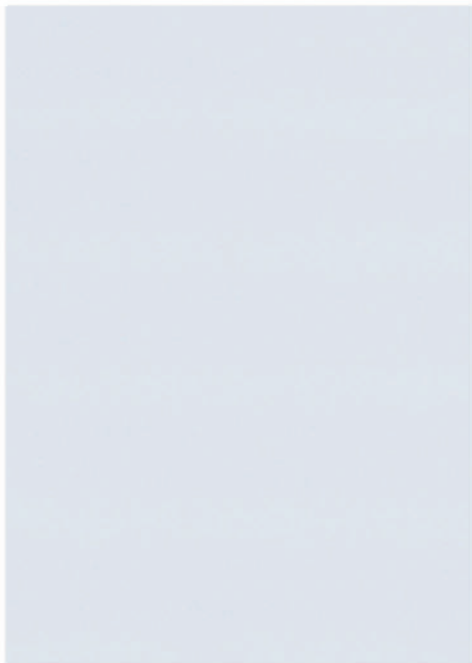
# Valley



241 VLY | SAND BROWN



224 VLY | LATTE BROWN



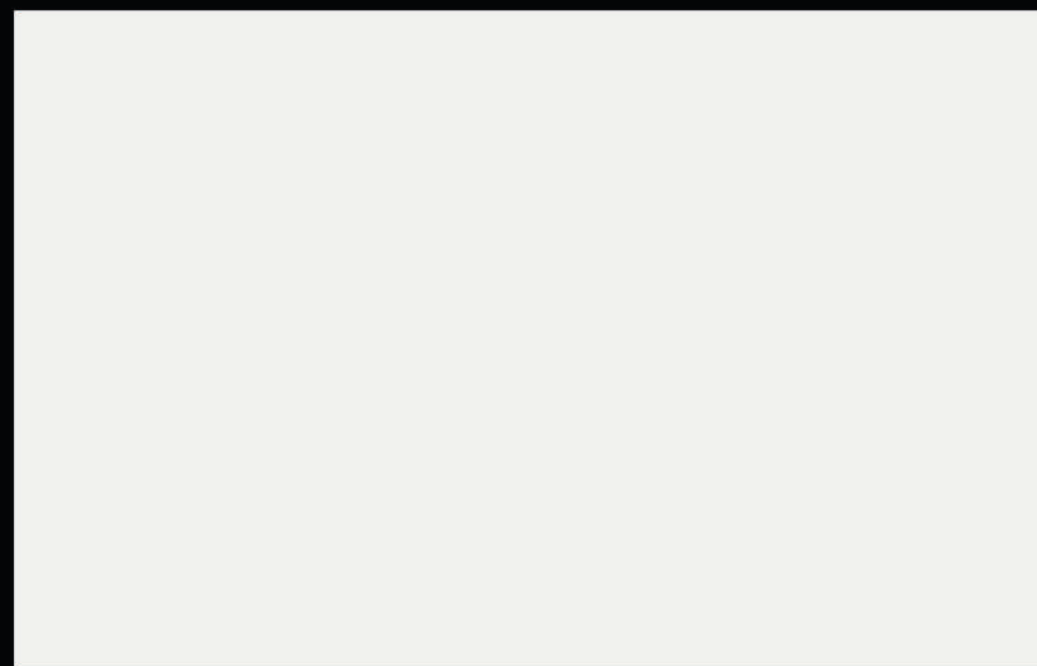
101 VLY | WINTER WHITE



129 VLY | CHARCOAL GREY



# Royal channel



242 RCH | CLOUD GREY



129 RCH | CHARCOAL GREY



101 RCH | WINTER WHITE



A Symbol  
of   
Refined  
Luxury

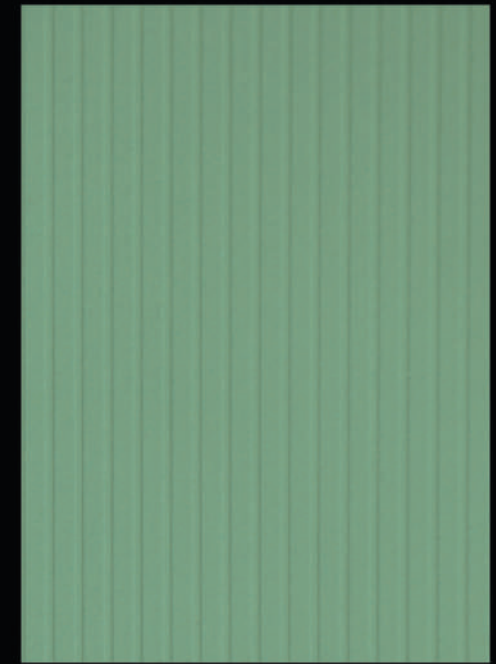
Designed to  
soothe the eye  
and calm the  
mind.



224 VTC | LATTE BROWN 



227 VTC | BABY BLUE



222 VTC | SEAFOAM GREEN



107 VTC | ANCHOR GREY



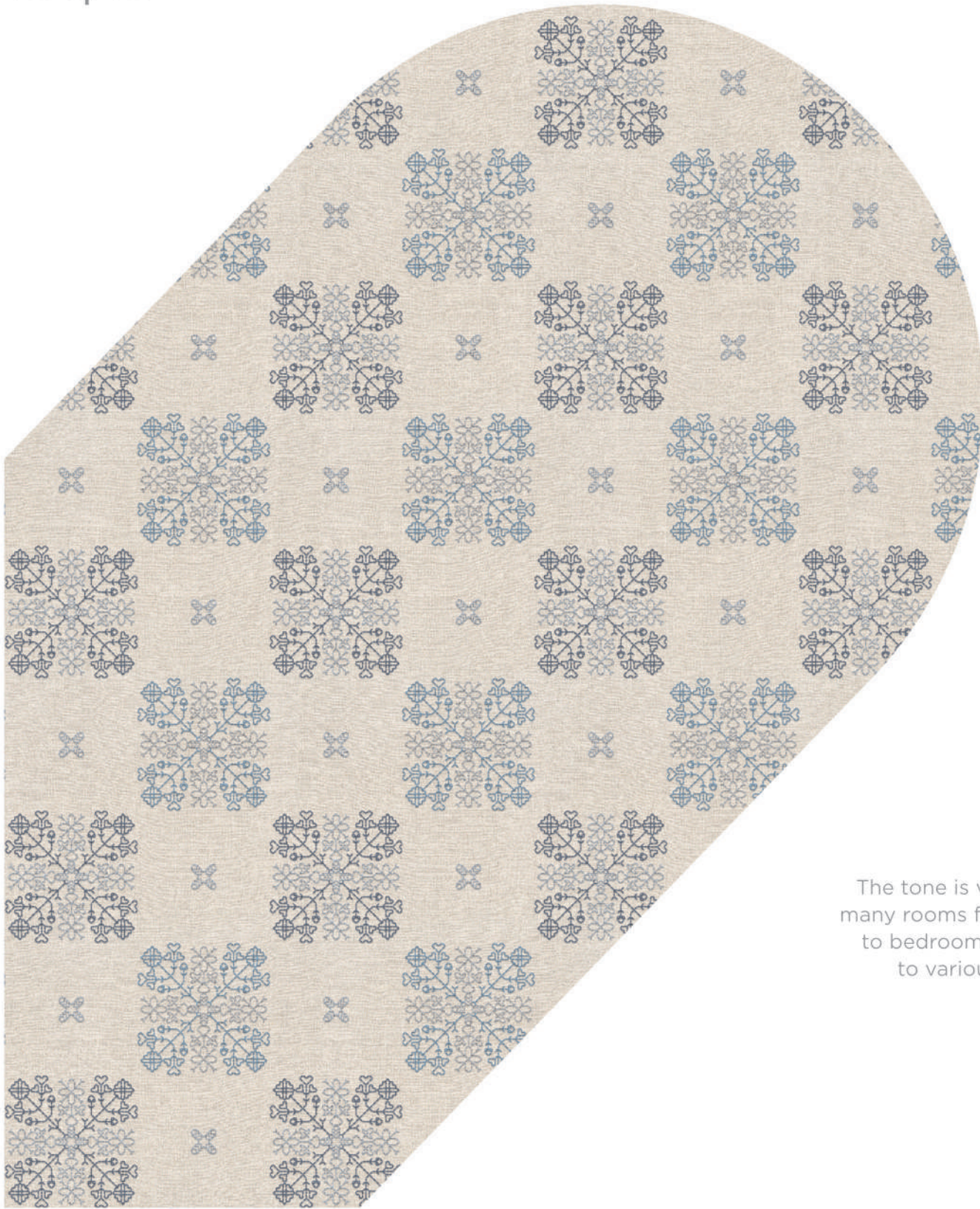
101 VTC | WINTER WHITE



SHADES THAT  
MAKE  
HEADS  
TURN



Teqno



The tone is versatile for many rooms from kitchens to bedrooms adapting to various uses.

753 FB | SKYROS



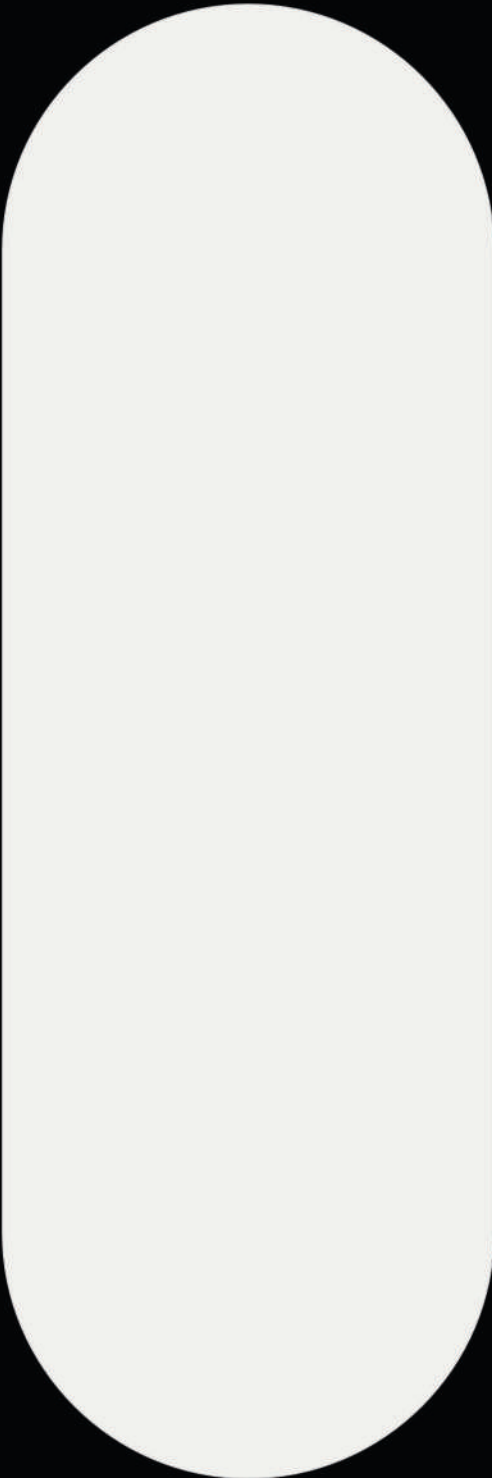
227 SMT | BABY BLUE




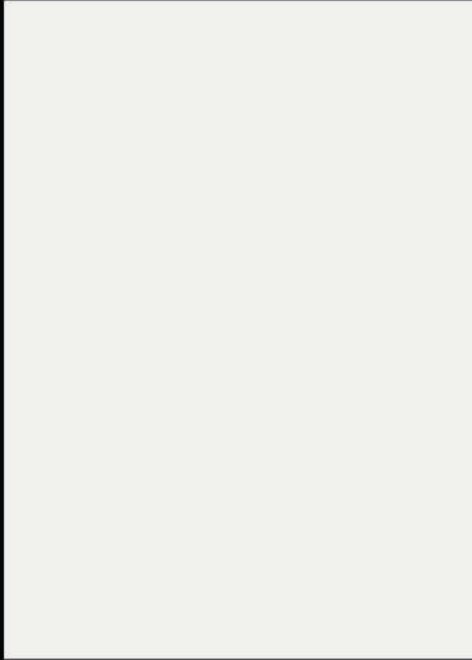
# Cloudy Grey

## LUXURY HAS A NEW — DEFINITION

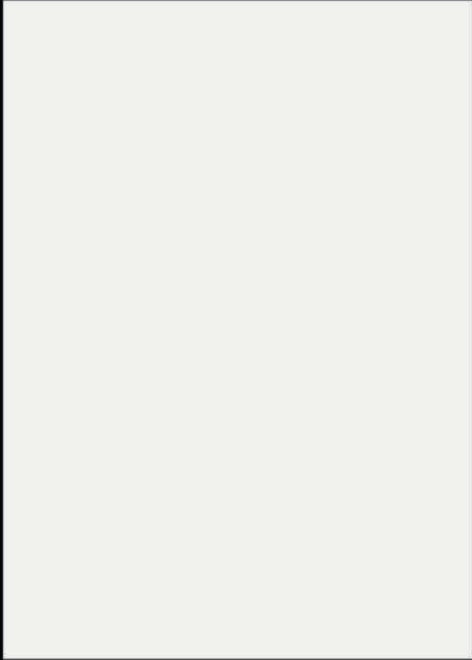
A coherent color base  
anchors furniture  
creating a unified feel  
across surfaces.



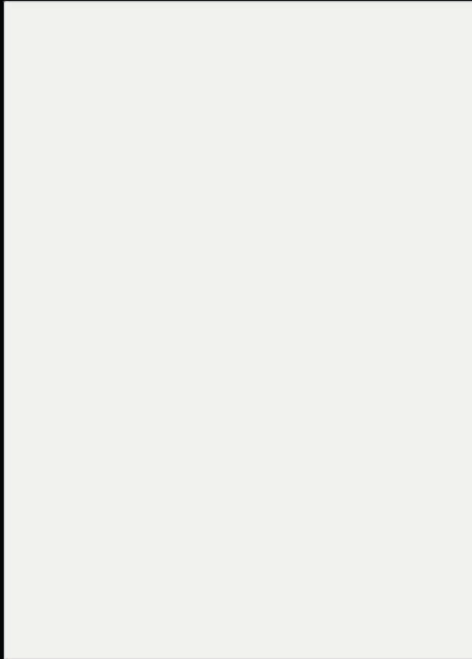
242 FLR | CLOUD GREY 



242 SMT | CLOUD GREY 



242 RCH | CLOUD GREY 

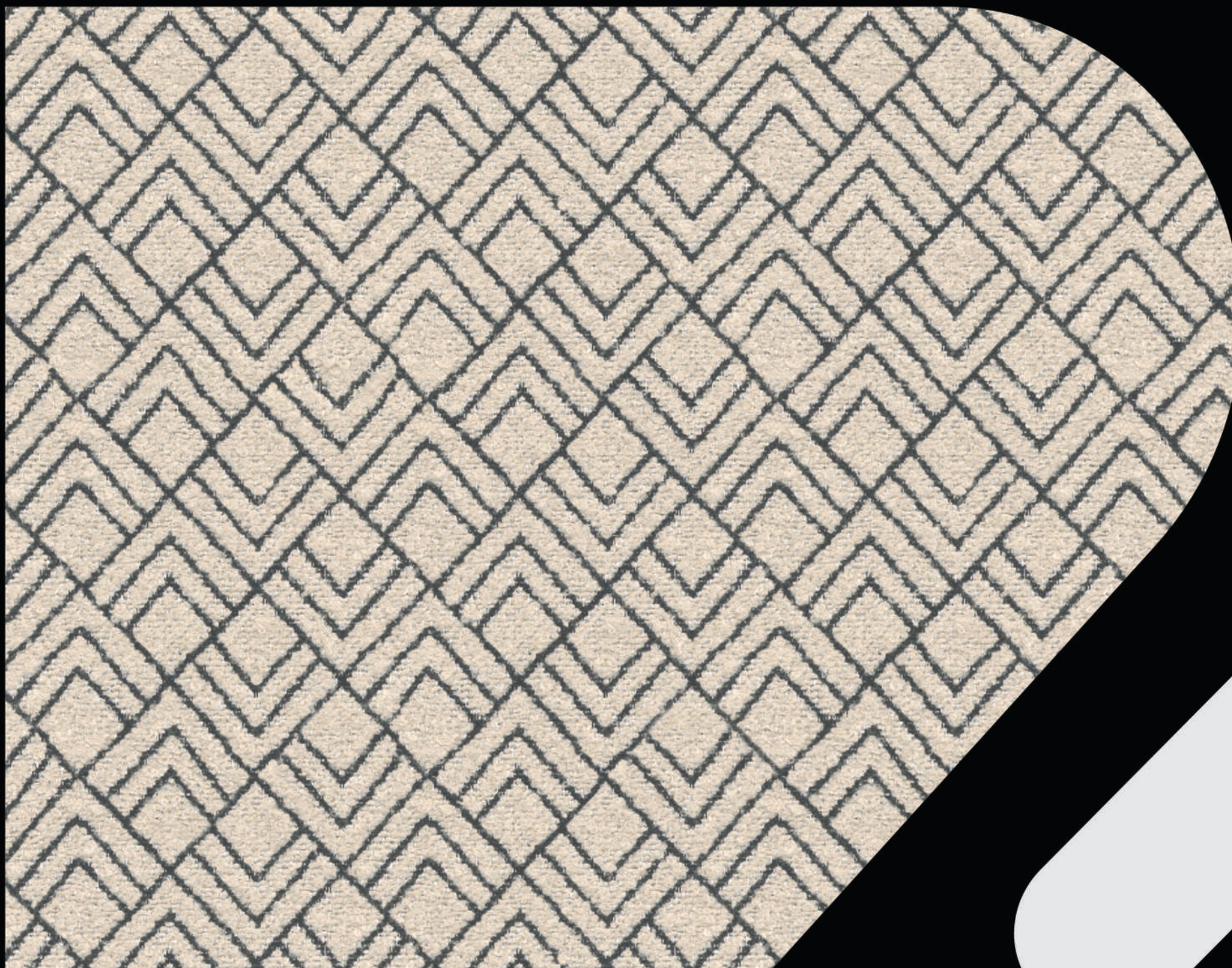


242 SGL | CLOUD GREY 



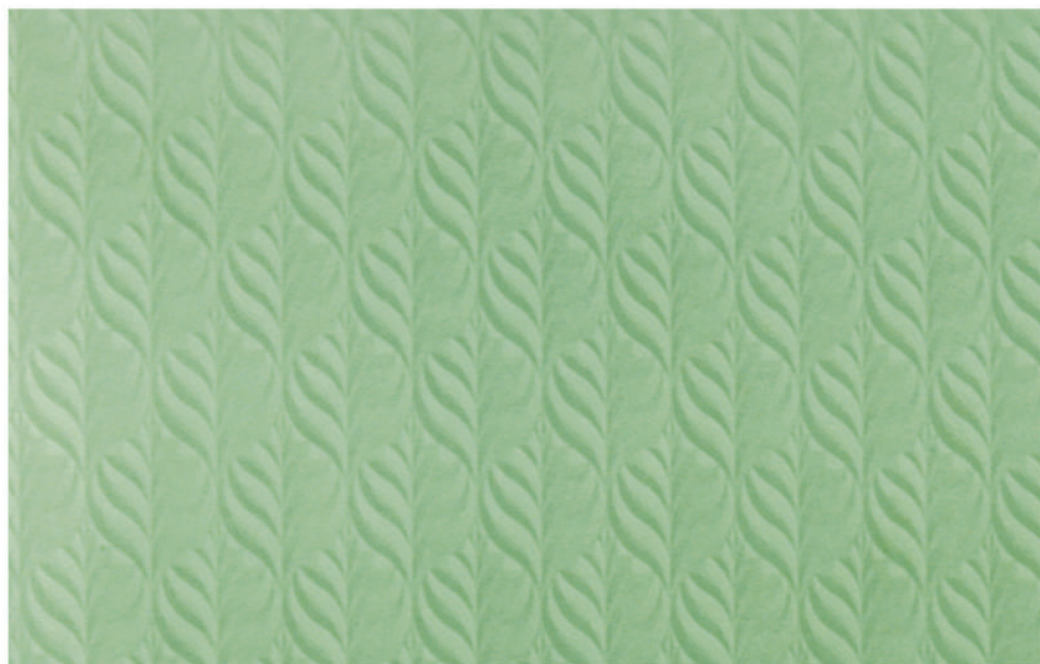
03 OMB | BEIGE 

The color idea is  
timeless and steady,  
stable  
across seasons,  
easy to maintain.

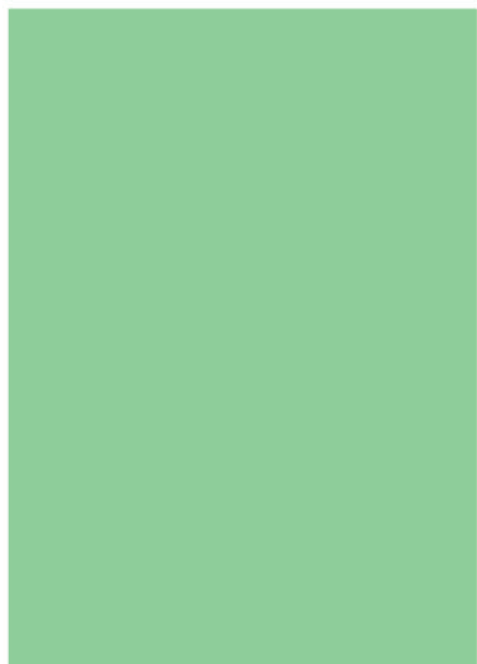


755 VN | MOTIF

# Pastel green



238 FLR | PASTEL GREEN



238 SMT | PASTEL GREEN



238 SGL | PASTEL GREEN



01 OMB | MINT OMBRE



# Sage Green



237 SMT | SAGE GREEN



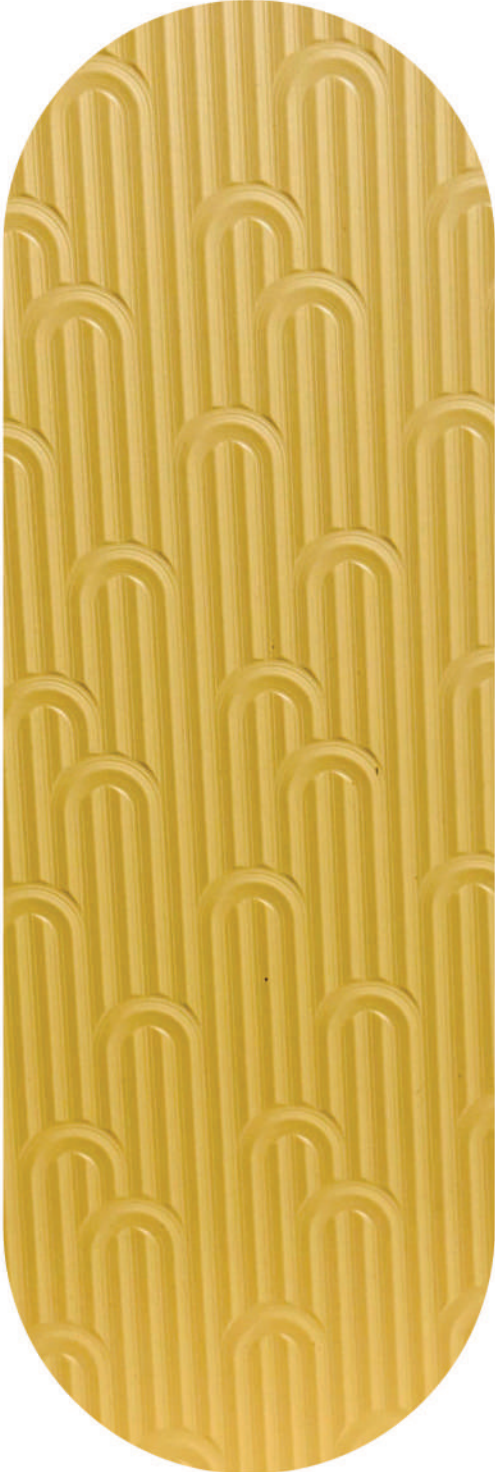
237 SGL | SAGE GREEN



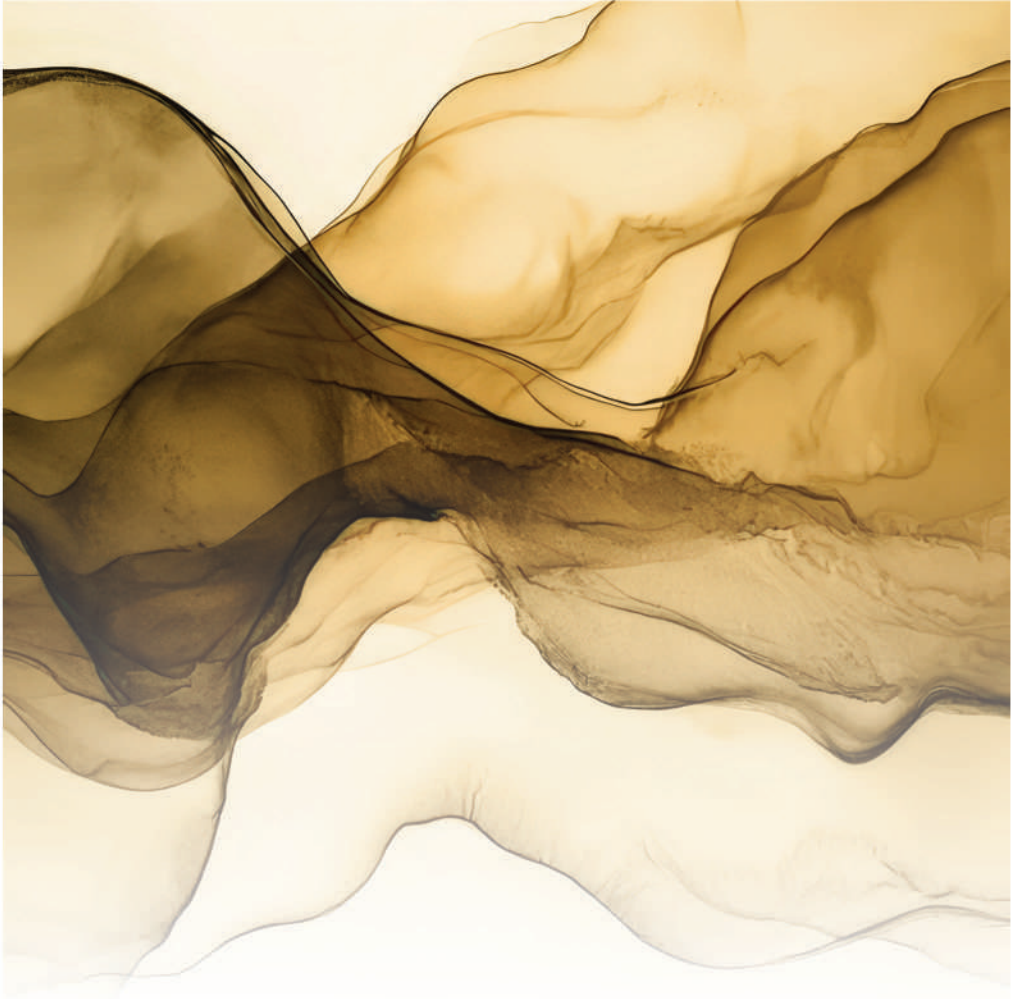
237 FLR | SAGE GREEN



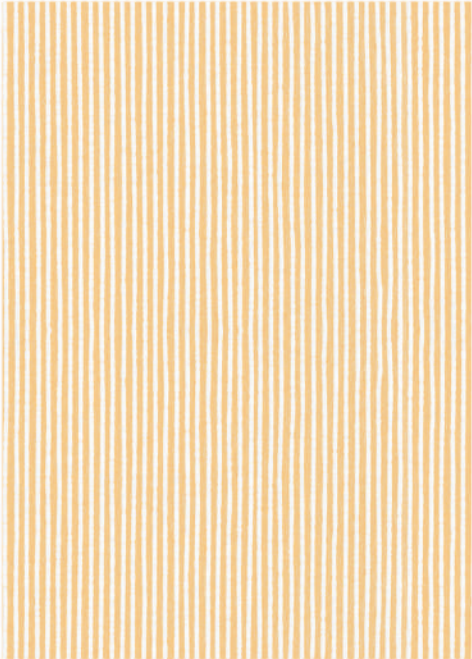
# Sand Brown



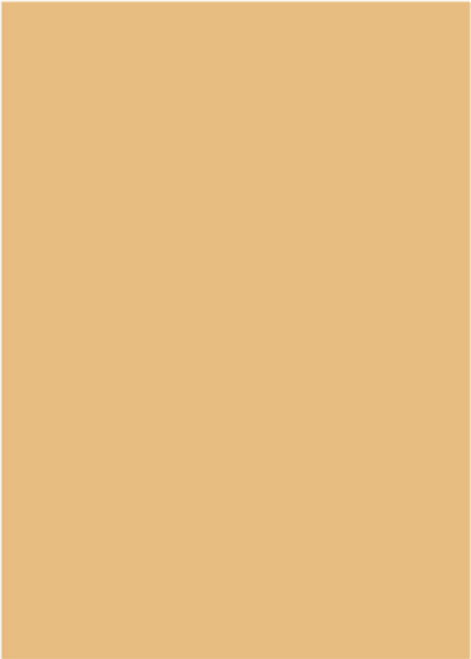
241 ACT | SAND BROWN 



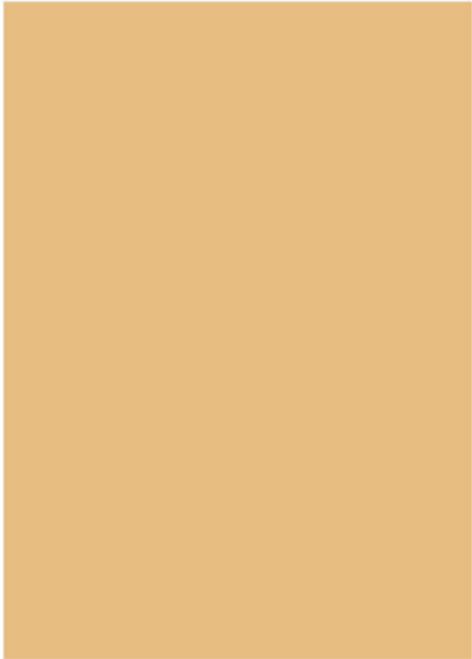
241 SMT | SAND BROWN 



02 OMB | ORANGE OMBRE



241 VLY | SAND BROWN 



241 SGL | SAND BROWN 

# Pomelo Olive



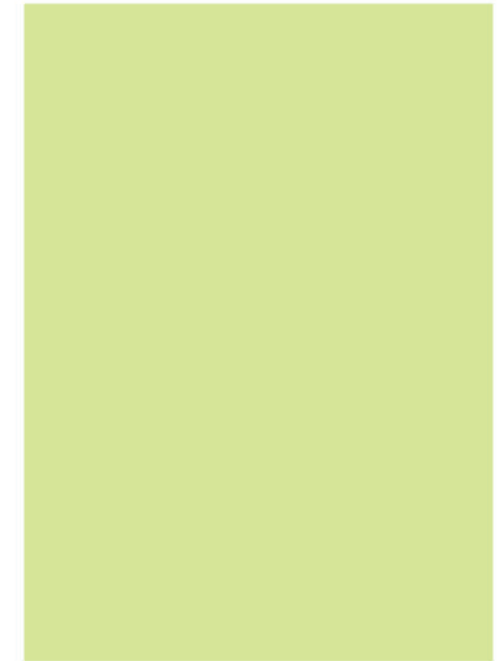
236 SMT | POMELO OLIVE



05 OMB | NEON MOBRE



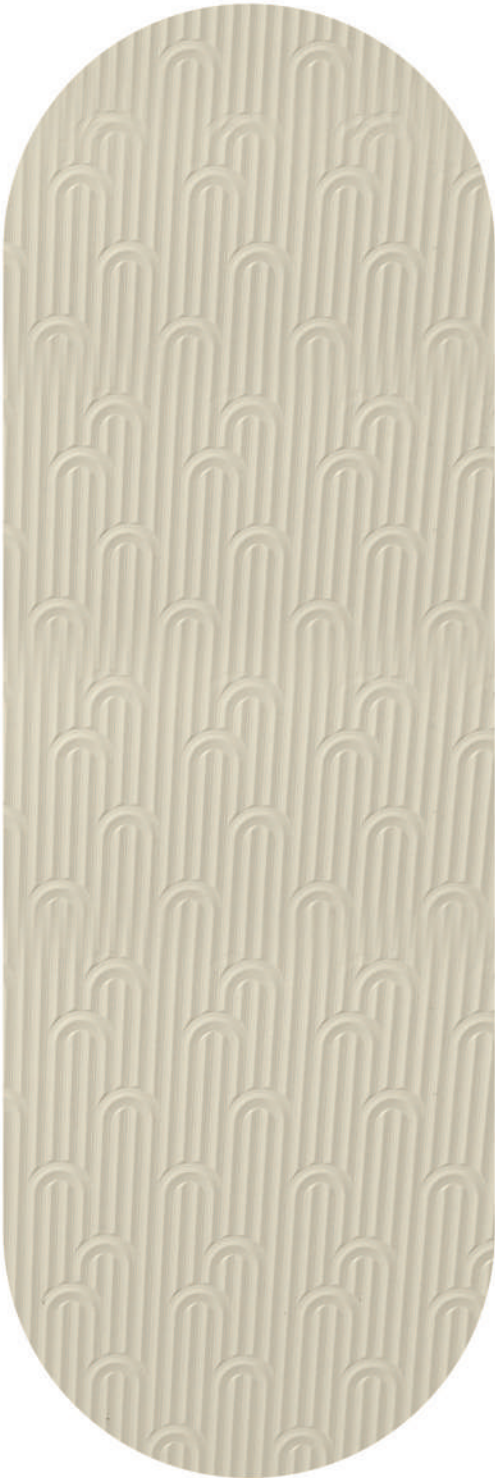
236 SGL | POMELO OLIVE



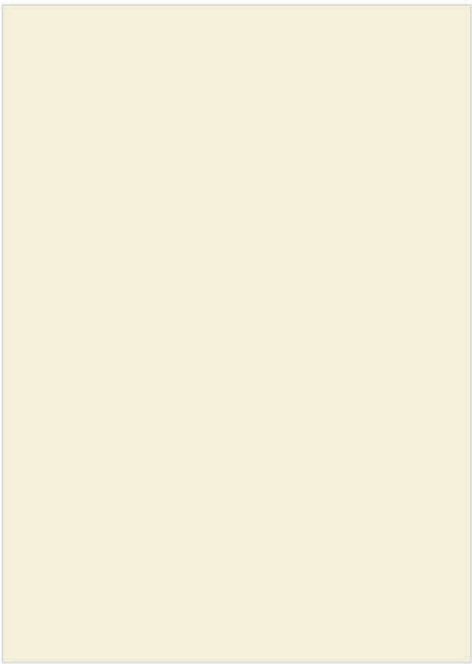
236 TRY | POMELO OLIVE



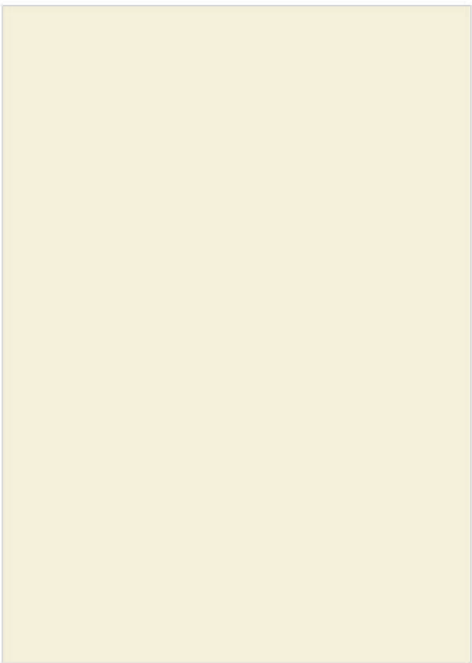
# Chic Beige



240 ACT | CHIC BEIGE 

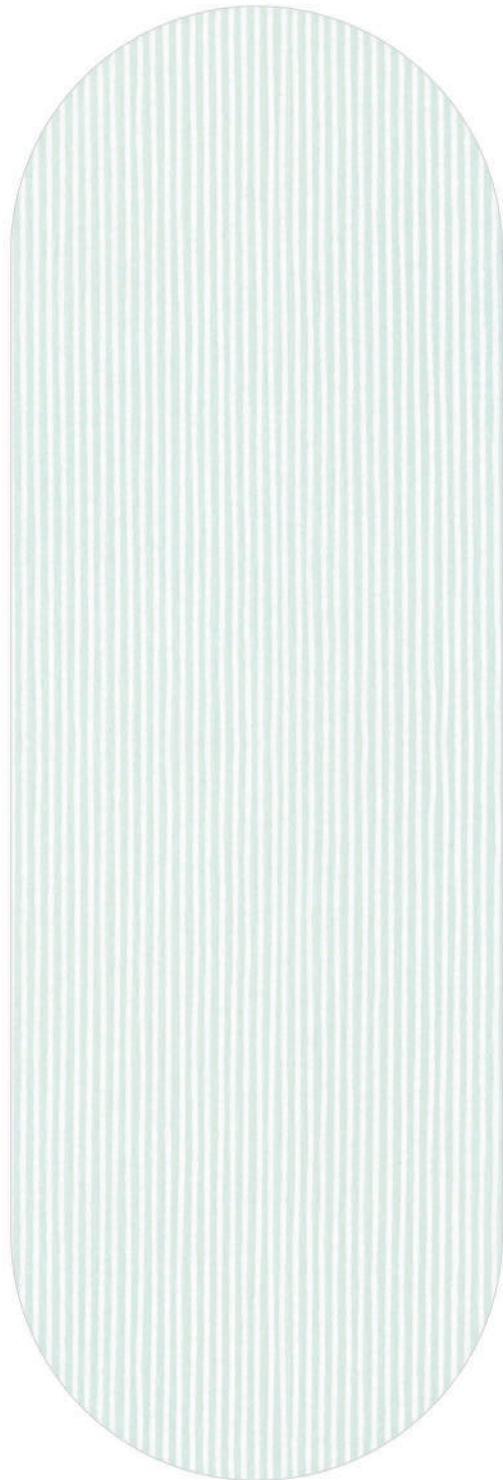


240 SMT | CHIC BEIGE 



240 SGL | CHIC BEIGE 



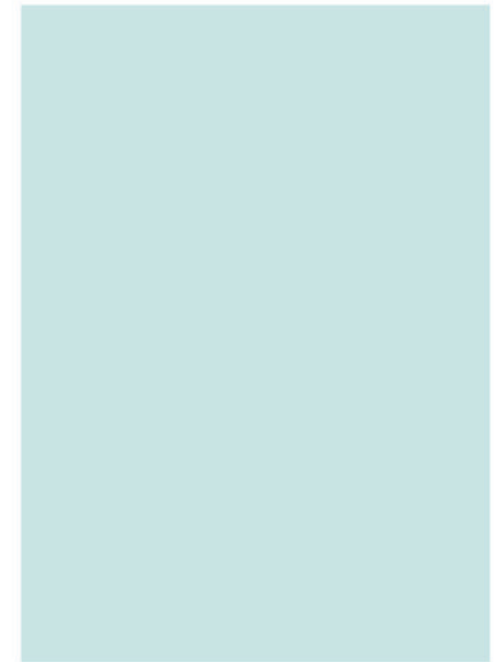


06 OMB | POWDER BLUE



239 ACT | BREEZE 

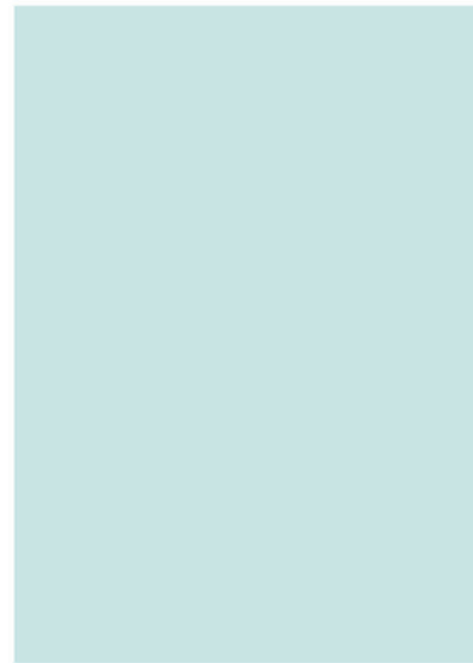
FLAUNT  
YOUR  
SPACE —  
STYLISHLY



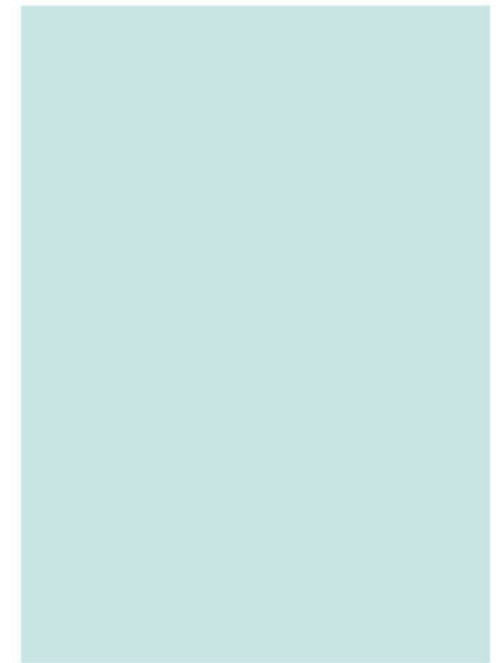
239 TRY | BREEZE



40  
41



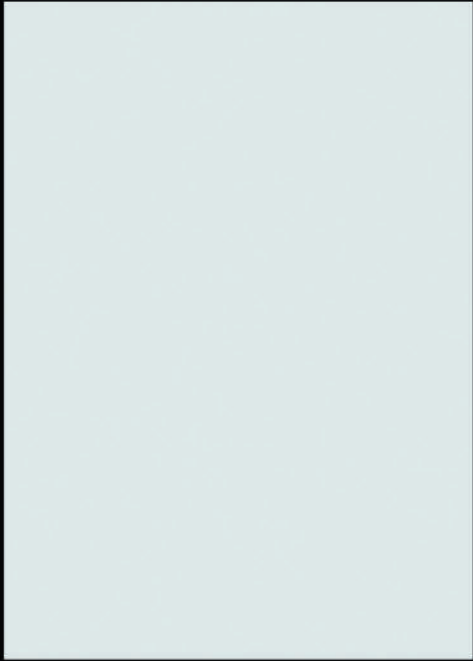
239 SMT | BREEZE



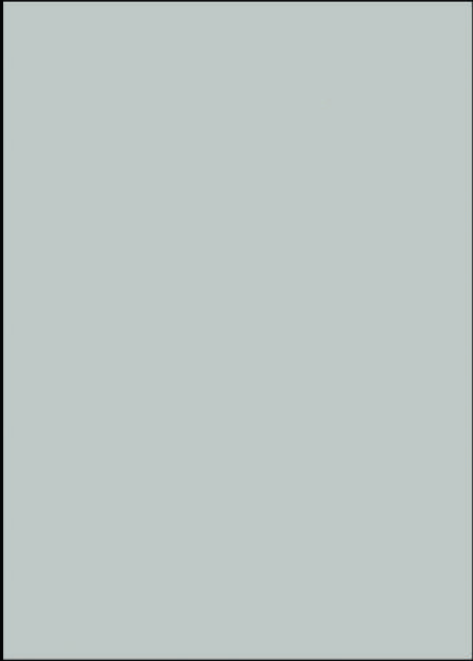
239 SGL | BREEZE



# Milky White



101 SMT | MILKY WHITE



101 SGL | MILKY WHITE



101 KOZA | MILKY WHITE



101 BK | MILKY WHITE



101 RCH | MILKY WHITE



101 FRO | MILKY WHITE



101 VTC | MILKY WHITE

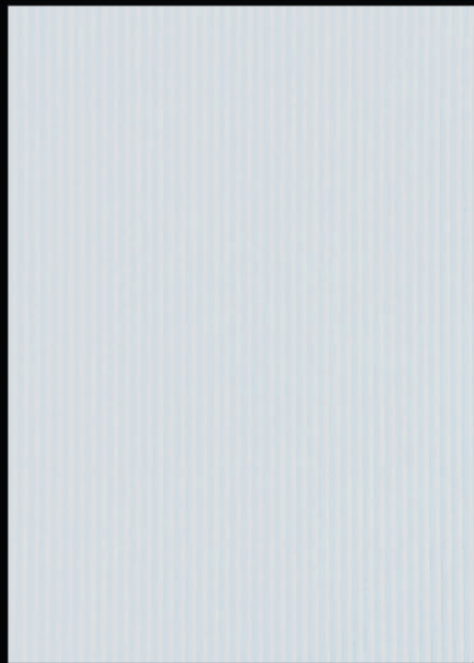


TRULY  
SPECTACULAR  
AND —  
ENAMORING

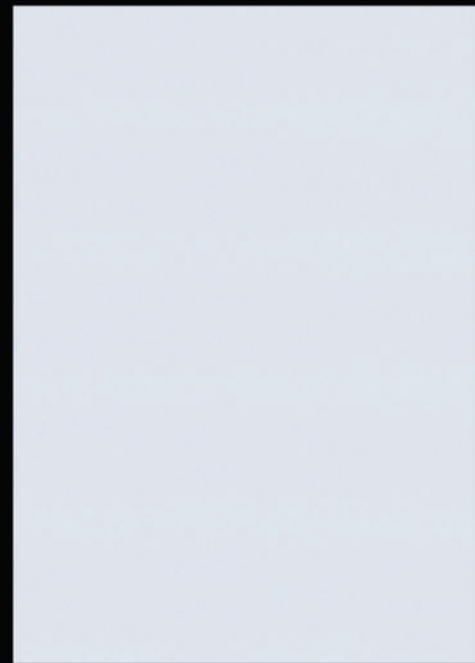


TIMELESS  
DESIGNS  
THAT —  
TRANSFORM

42  
43



101 MRF | MILKY WHITE



101 VLY | MILKY WHITE



101 PKR | MILKY WHITE



101 LTR | MILKY WHITE

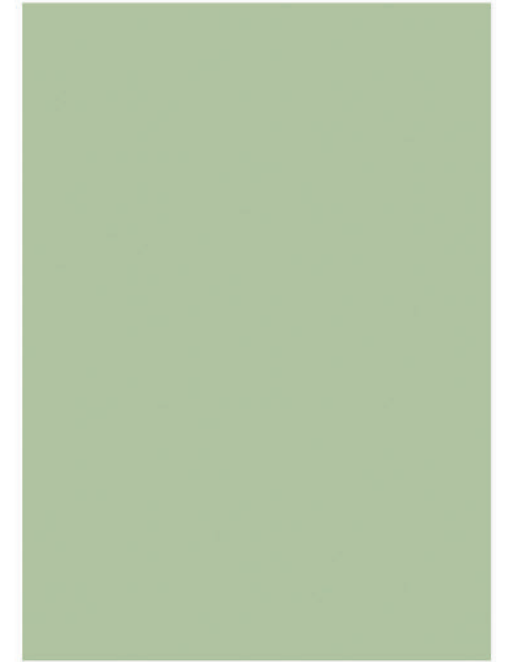




# Loto Green



229 SGL | LOTO GREEN



229 SMT | LOTO GREEN



229 MRF | LOTO GREEN



229 BK | LOTO GREEN



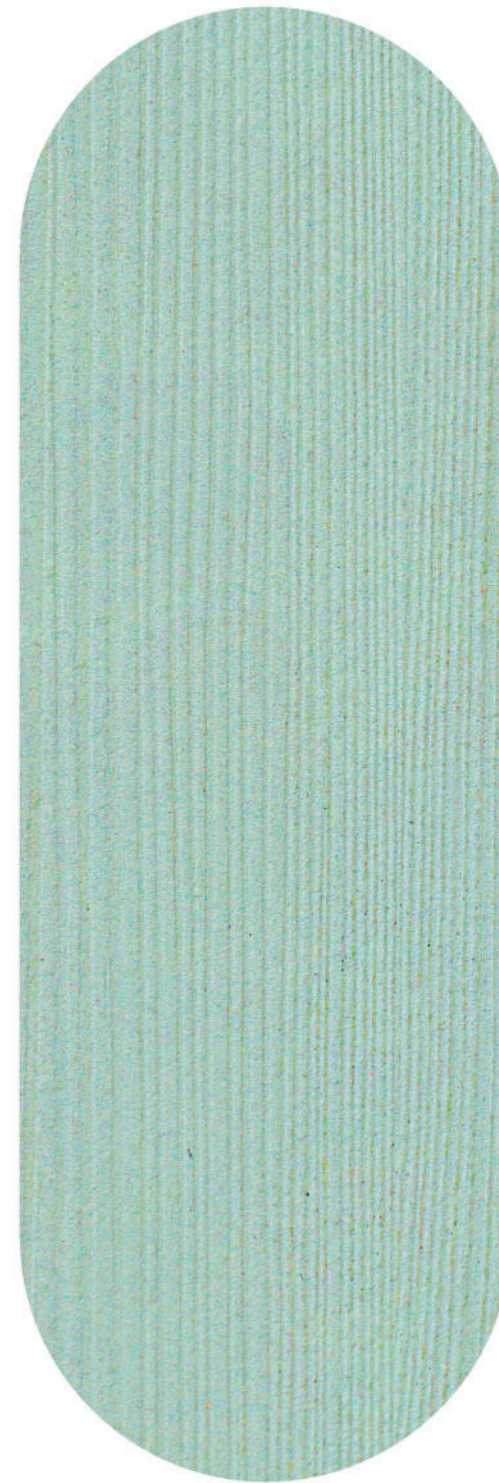
# Water Green



228 SMT | WATER GREEN 



228 SGL | WATER GREEN 



228 CW | WATER GREEN 

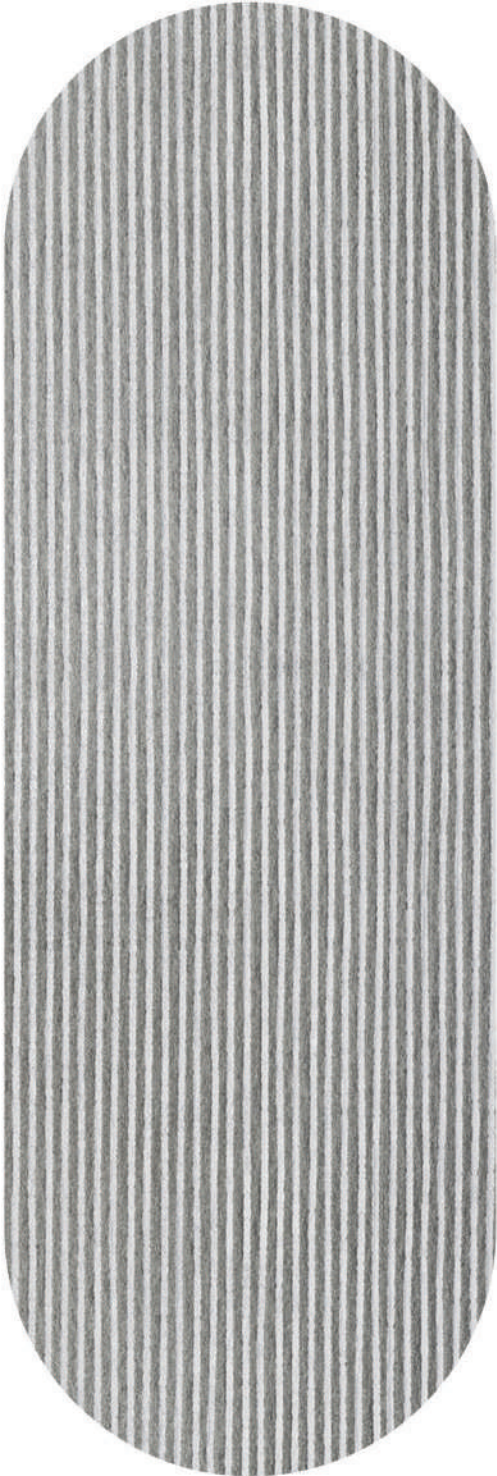
# Smoke Grey



212 SMT | SMOKE GREY



212 SGL | SMOKE GREY



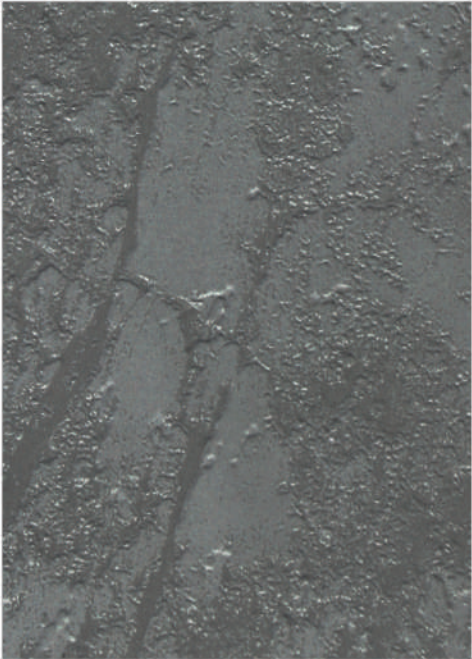
07 OMB | GREY



212 ZMT | SMOKE GREY



212 STN | SMOKE GREY



212 RS | SMOKE GREY



212 LTR | SMOKE GREY



# Latte Brown



224 SMT | LATTE BROWN



224 SGL | LATTE BROWN



224 ZMT | LATTE BROWN



224 VTC | LATTE BROWN



224 VLY | LATTE BROWN



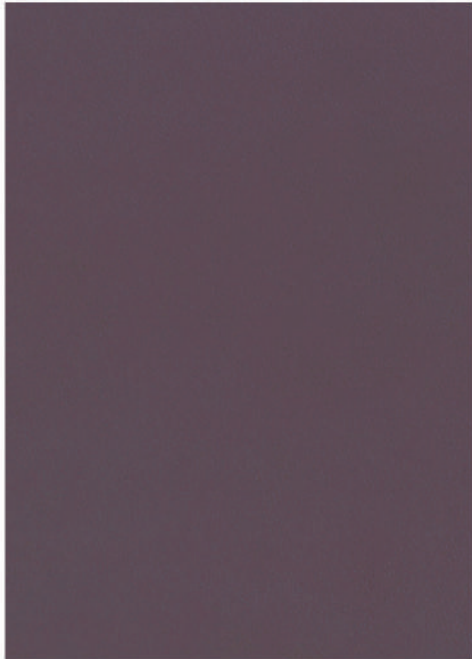
224 CW | LATTE BROWN



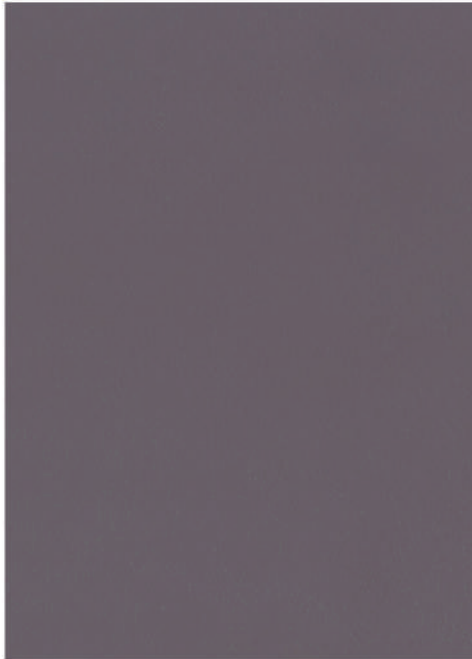
# Subtle Dove



225 SMT | SUBTLE DOVE



225 SGL | SUBTLE DOVE



225 ZMT | SUBTLE DOVE

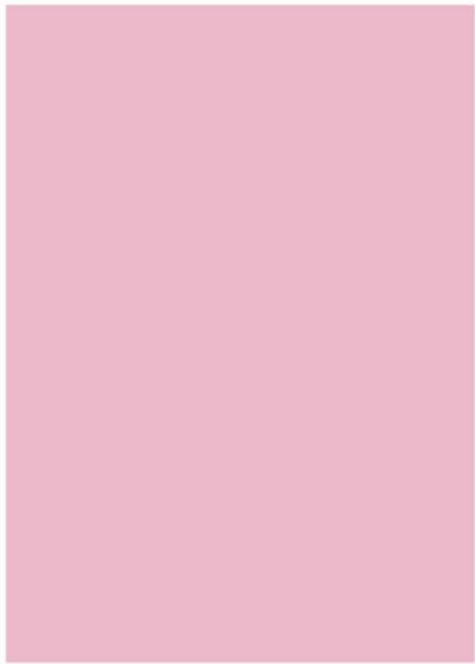


225 FRO | SUBTLE DOVE

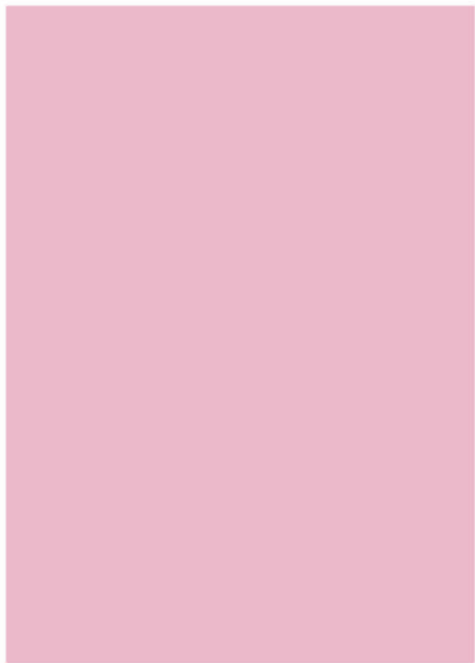


GIVE YOUR  
SPACE  
A — CHARACTER

# Blush Pink



243 SGL | BLUSH PINK



243 SMT | BLUSH PINK



04 OMB | PINK OMBRE

# Periwinkle Lavendar



220 SGL  
PERIWINKLE LAVENDAR



220 SMT  
PERIWINKLE LAVENDAR



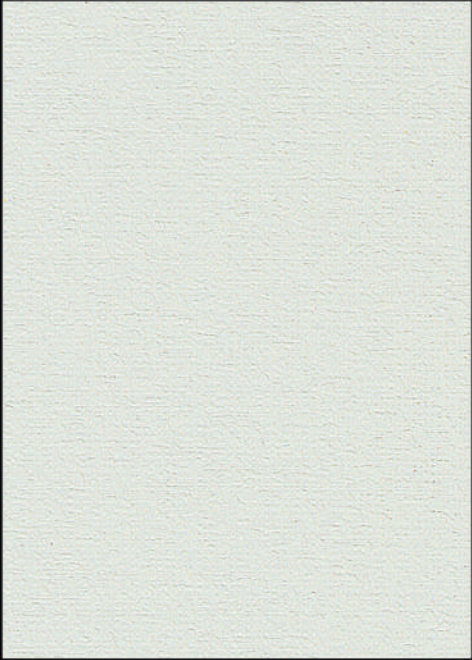
220 CW | PERIWINKLE LAVENDAR



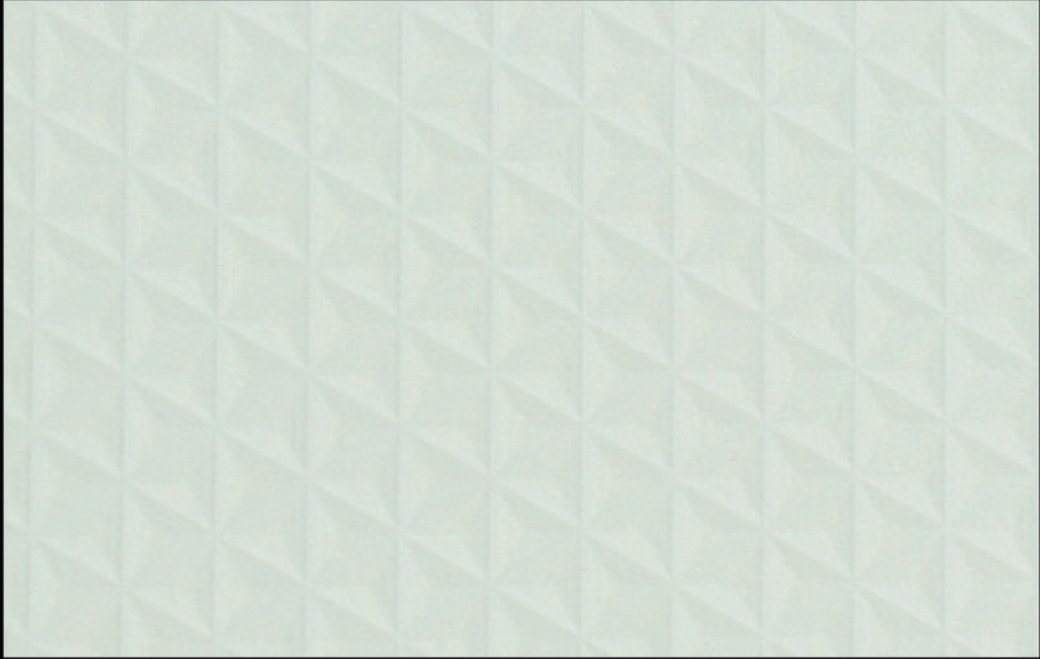
# Clean Beige



312 SGL | CLEAN BEIGE



312 KOZA | CLEAN BEIGE



312 TRY | CLEAN BEIGE

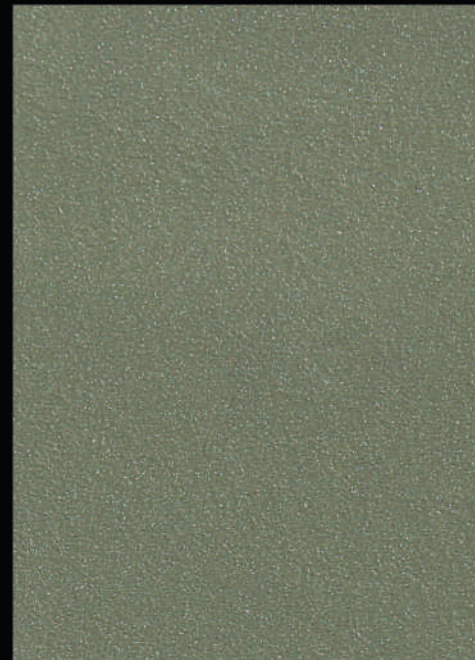


Sidwalk Grey

Warm Tan

An  
Essence  
of ———  
Contemporary.  
Style

Subtle tones that ease  
the senses and support  
long-lasting comfort.



313 SGL | SIDWALK GREY



315 SGL | WARM TAN



313 KOZA | SIDWALK GREY




315 KOZA | WARM TAN



# Percious Pearl



103 LTR | PERCIOUS PEARL 



103 ZMT | PERCIOUS PEARL 




103 SMT | PERCIOUS PEARL 



103 SGL | PERCIOUS PEARL 



103 STN | PERCIOUS PEARL 

# Porpoise Grey



106 FRO | PORPOISE GREY 



106 PKR | PORPOISE GREY 



106 ZMT | PORPOISE GREY 



106 SGL | PORPOISE GREY 

52  
53

## A SAGA OF ELITE SIGNIFICANCE

Color helps define zones without walls  
indicating function subtly while  
maintaining openness.



106 SMT | PORPOISE GREY 

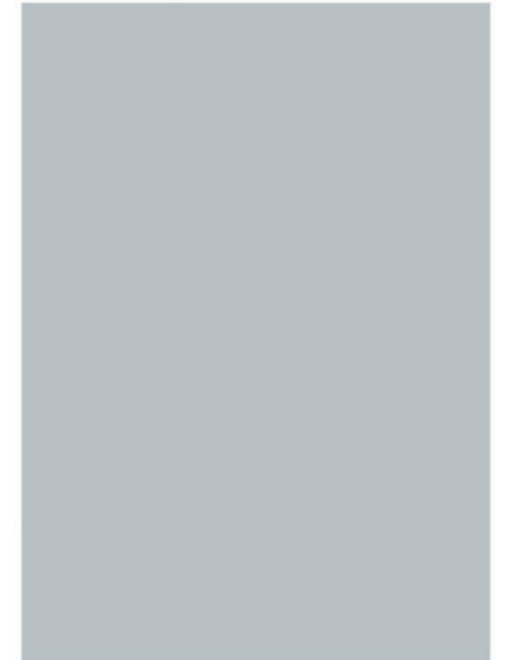


106 BK | PORPOISE GREY 

# Metal Grey



127 SGL | METAL GREY



127 ZMT | METAL GREY



127 SMT | METAL GREY



# Charcoal Grey



129 ZMT | CHARCOAL GREY 



129 SGL | CHARCOAL GREY 

WONDROUS  
FORMS  
OF   
GLAMOUR



129 SMT | CHARCOAL GREY 



129 RCH | CHARCOAL GREY 



129 VLY | CHARCOAL GREY 



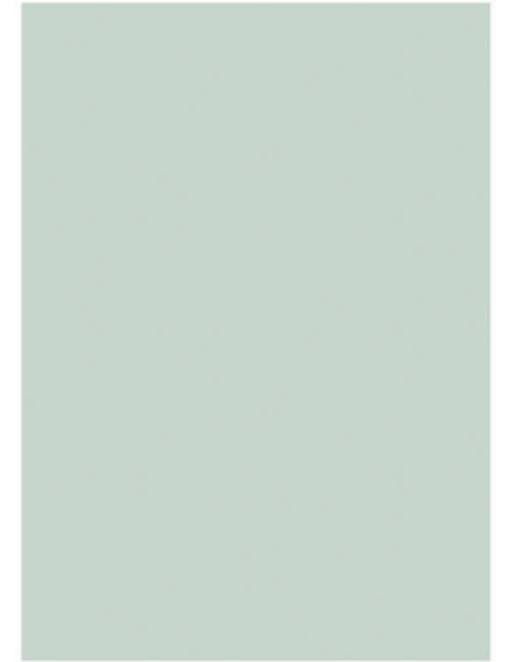
129 CW | CHARCOAL GREY 



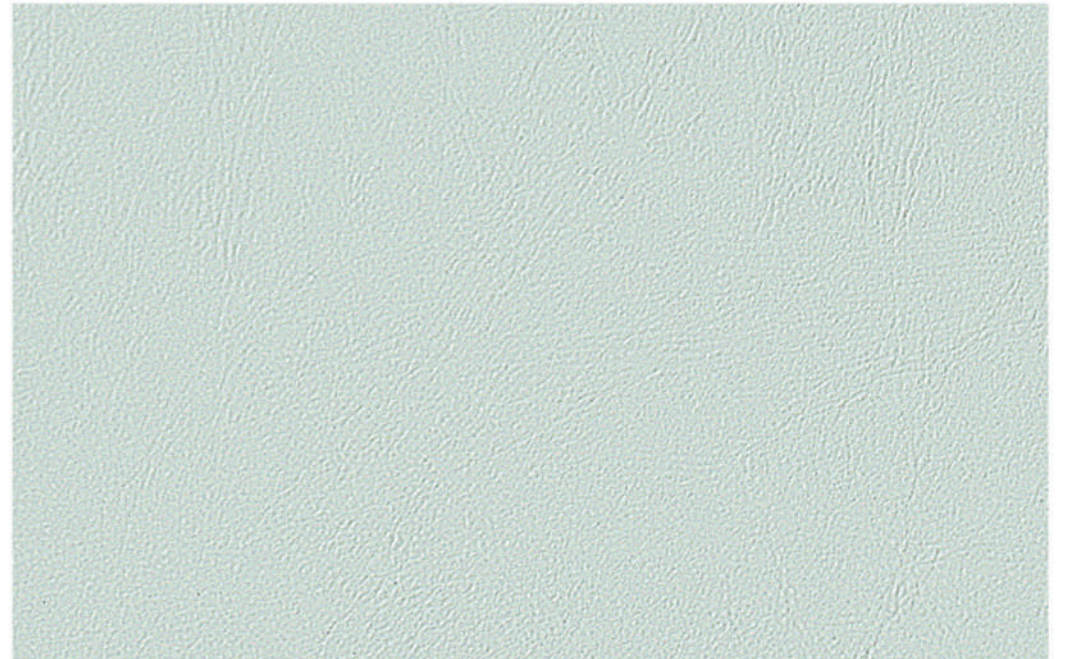
## Fog grey



105 SMT | FOG GREY



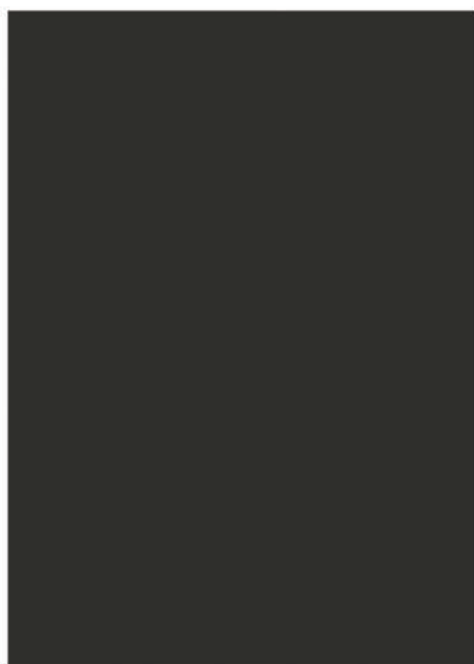
105 SGL | FOG GREY



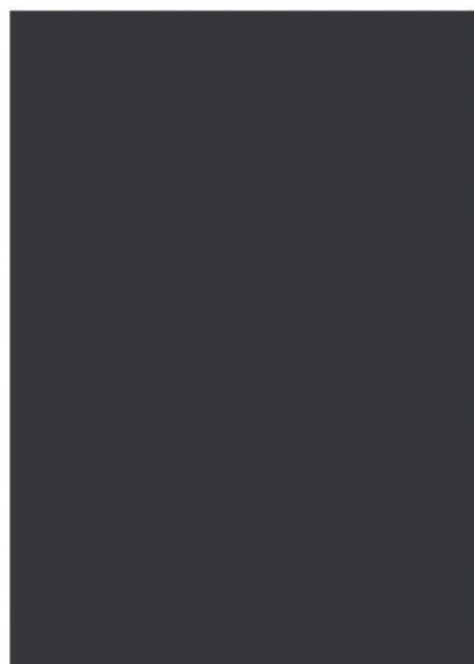
105 LTR | FOG GREY



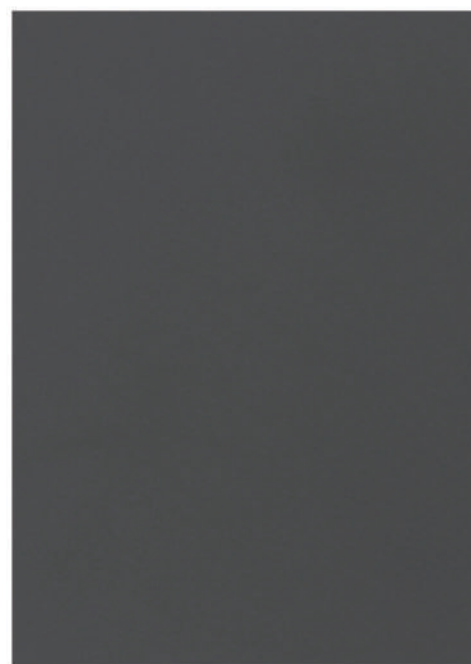
# Anchor Grey



107 SGL | ANCHOR GREY



107 SMT | ANCHOR GREY



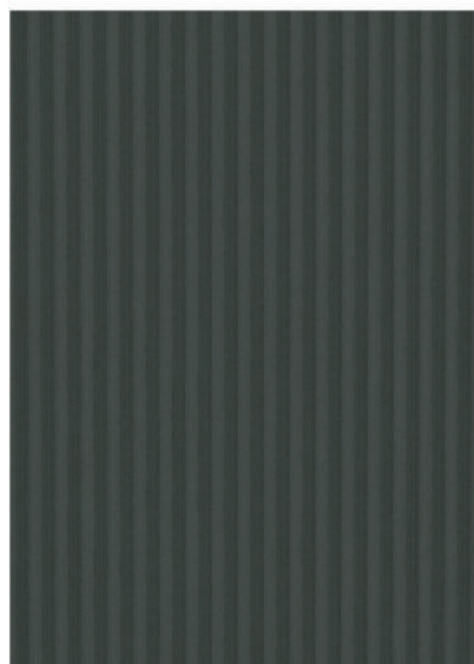
107 ZMT | ANCHOR GREY



107 LTR | ANCHOR GREY



107 VTC | ANCHOR GREY



107 MRF | ANCHOR GREY



EXQUISITE  
DESIGN  
SAGA —  
IS HERE

The mood is agreeable for daily living  
practical and pleasant welcoming to all.

# Pewter Grey



211 CW | PEWTER GREY



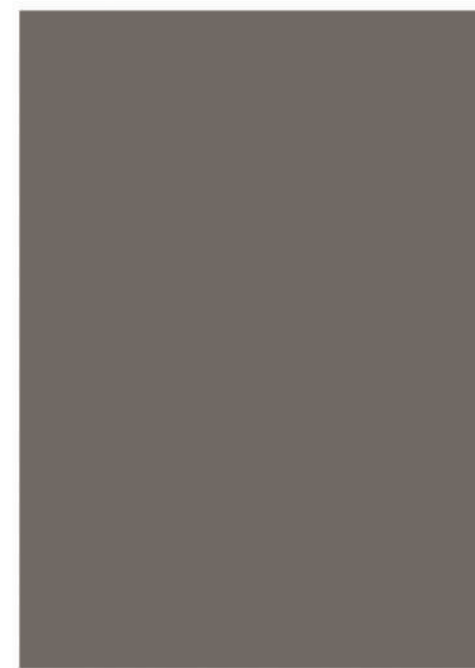
211 KOZA | PEWTER GREY



211 SMT | PEWTER GREY



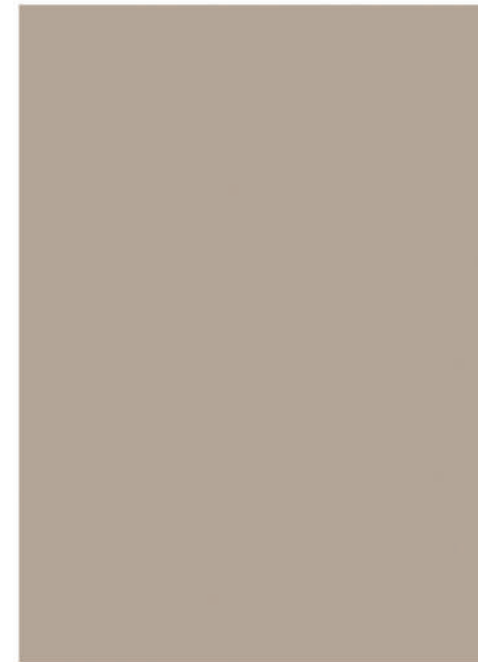
211 SGL | PEWTER GREY



211 ZMT | PEWTER GREY



# Khaki Brown



122 SGL | KHAKE BROWN



122 SMT | KHAKE BROWN



58  
59



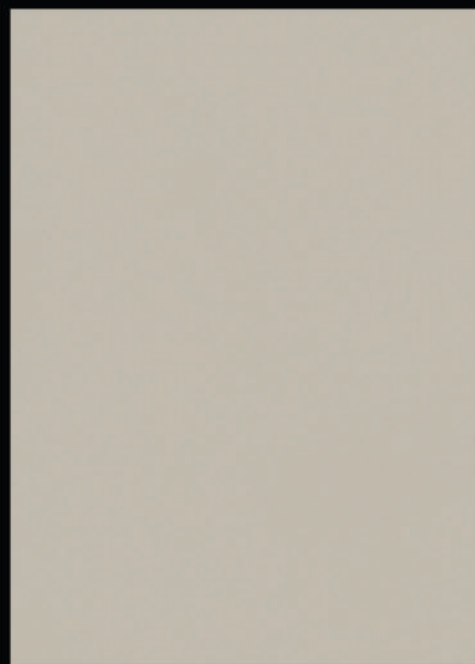
122 LTR | KHAKE BROWN



# Rose Beige



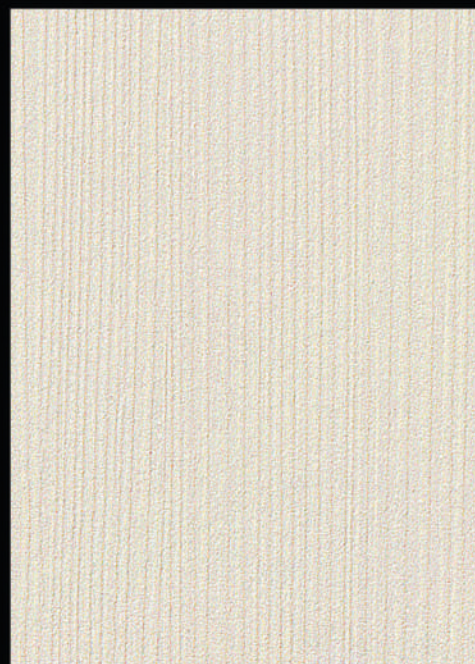
226 SMT | ROSE BEIGE



226 SGL | ROSE BEIGE



226 ZMT | ROSE BEIGE



226 CW | ROSE BEIGE



# Barley

Color brings warmth without overpowering maintaining balance so spaces feel cozy.



133 MRF | BARLEY



133 SGL | BARLEY



133 SMT | BARLEY



Teqno

DAMAS  
LAMINATES®



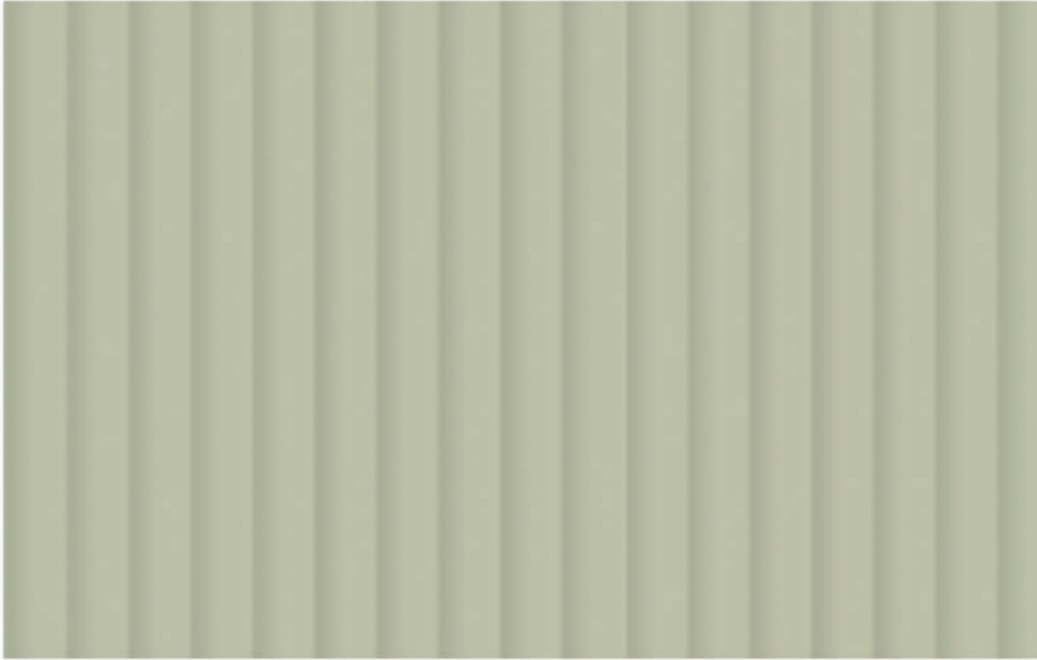
60  
61

## RAVISHING DESIGNS FOR DECORS

Soft color echoes through  
the design creating  
coherence from  
room to room.

752 SMT | SALGO

# Almond Brown



218 FRO | ALMOND BROWN



218 SGL | ALMOND BROWN



218 PKR | ALMOND BROWN



218 SMT | ALMOND BROWN



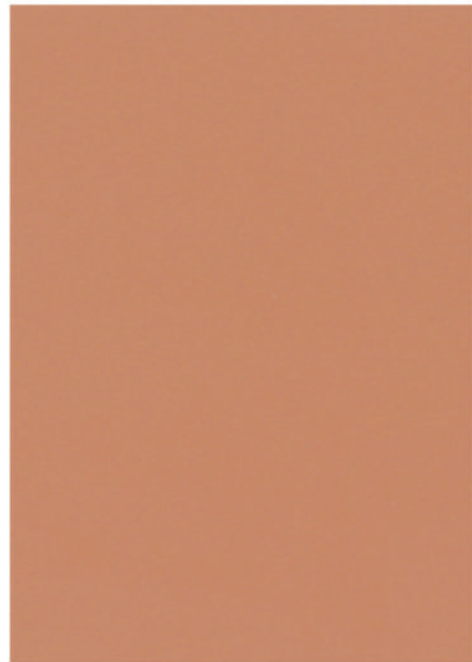
218 ZMT | ALMOND BROWN



# Squash Orange



223 SGL | SQUASH ORANGE



223 SMT | SQUASH ORANGE



223 KOZA | SQUASH ORANGE



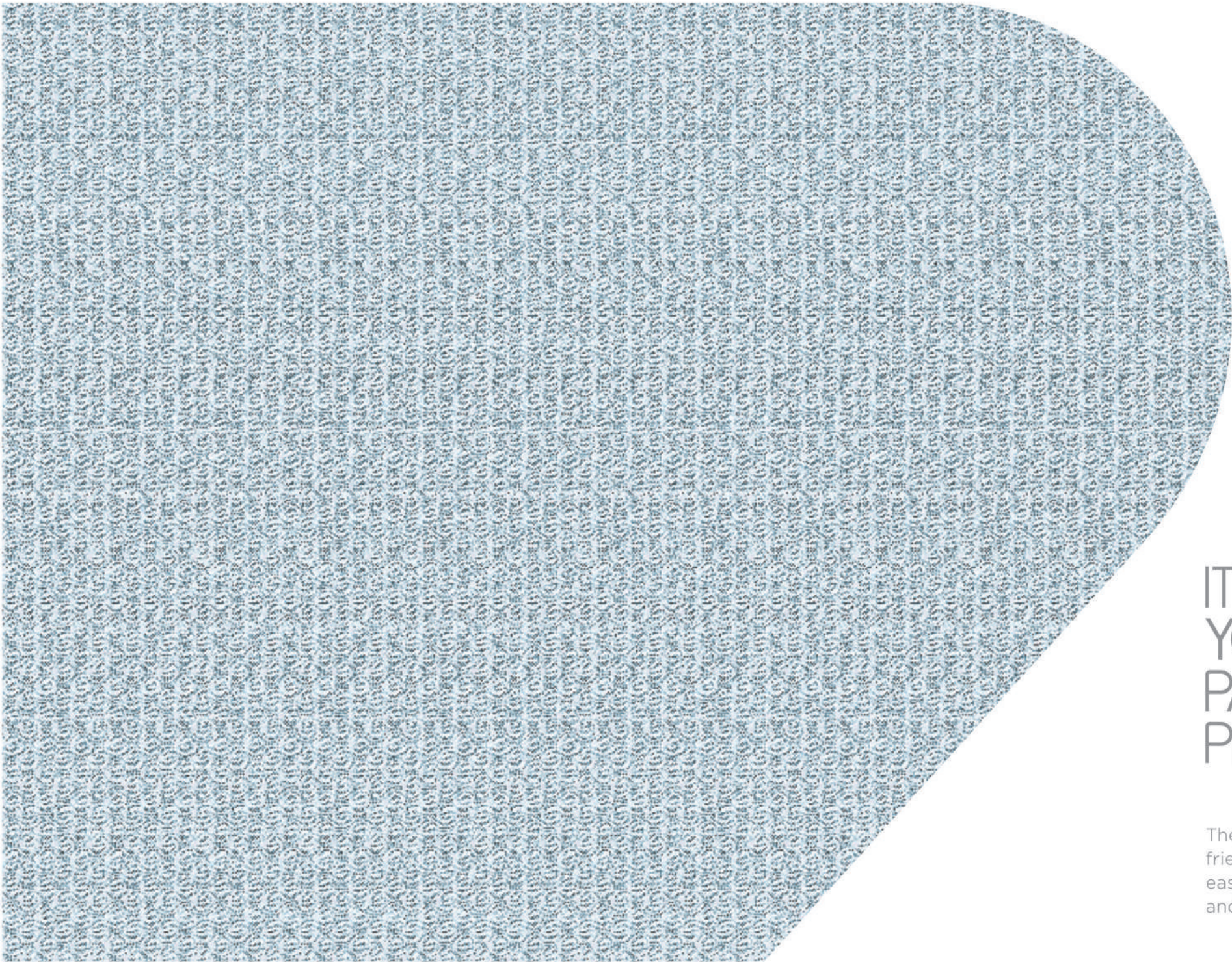
223 ZMT | SQUASH ORANGE

Subtle shading adds texture to the eye enhancing material richness with gentle complexity.

AMAZING  
AND   
ABSOLUTELY  
FRESH



Teqno



IT'S  
YOUR   
PARADISE  
PICTURE

The color language stays friendly and approachable easy to engage with and broadly appealing.

750 FB | GREYISH BLUE WEAVE

# Baby Blue



227 SGL | BABY BLUE



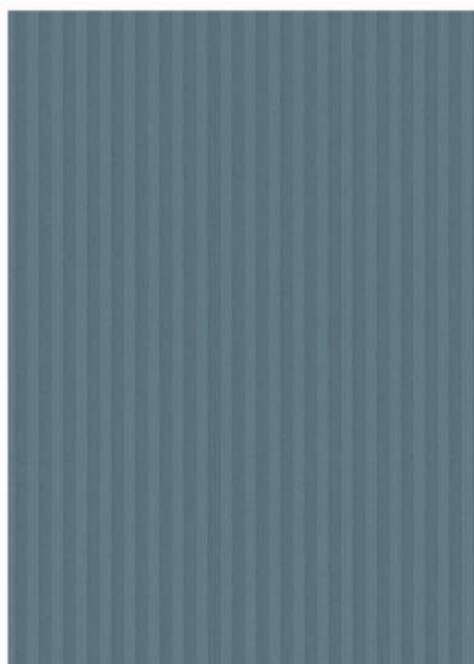
227 SMT | BABY BLUE



The finish reflects a quiet personality unassuming yet reliable, suitable for everyday life.



227 ZMT | BABY BLUE



227 MRF | BABY BLUE



227 VTC | BABY BLUE



227 PKR | BABY BLUE



227 CW | BABY BLUE



# Seafoam Green



222 PKR  
SEAFOAM GREEN



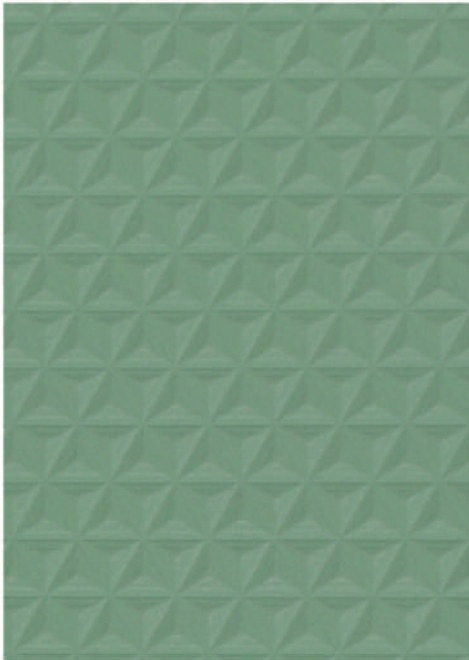
222 ZMT | SEAFOAM GREEN



222 SMT | SEAFOAM GREEN



222 VTC  
SEAFOAM GREEN



222 TRY | SEAFOAM GREEN



222 SGL | SEAFOAM GREEN





HUES  
— OF  
MAGNIFICENT  
REIGN

66  
67

The color dialogue stays understated allowing conversations to take centerstage without visual competition.



# Pecan Brown

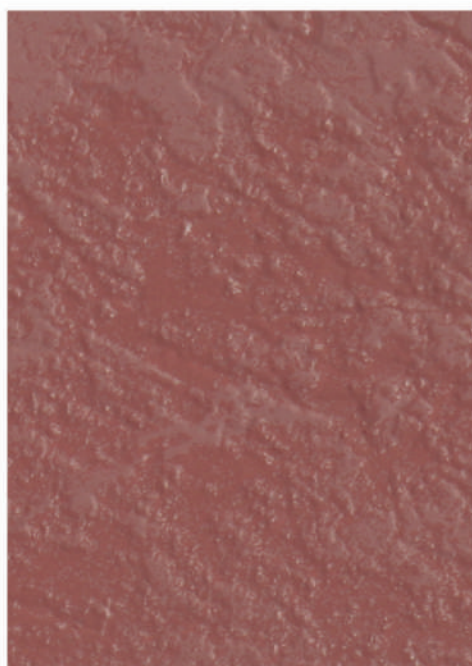


213 SGL | PECAN BROWN 

The look is clean and uncomplicated straightforward to maintain and easy to update.



213 SMT | PECAN BROWN 



213 RS | PECAN BROWN 

# Desert Taupe



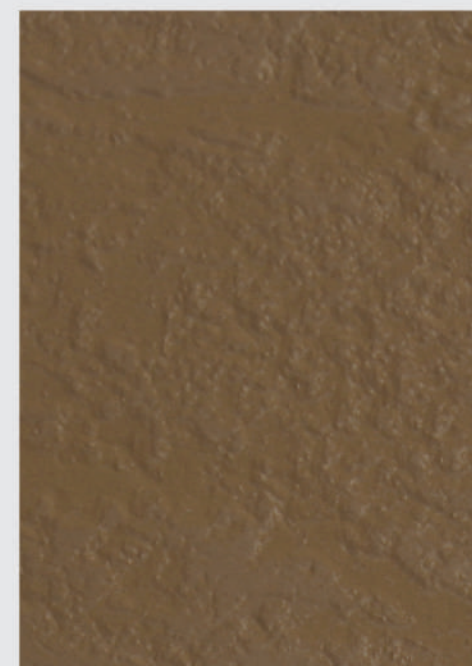
215 ZMT | DESERT TAUPE 



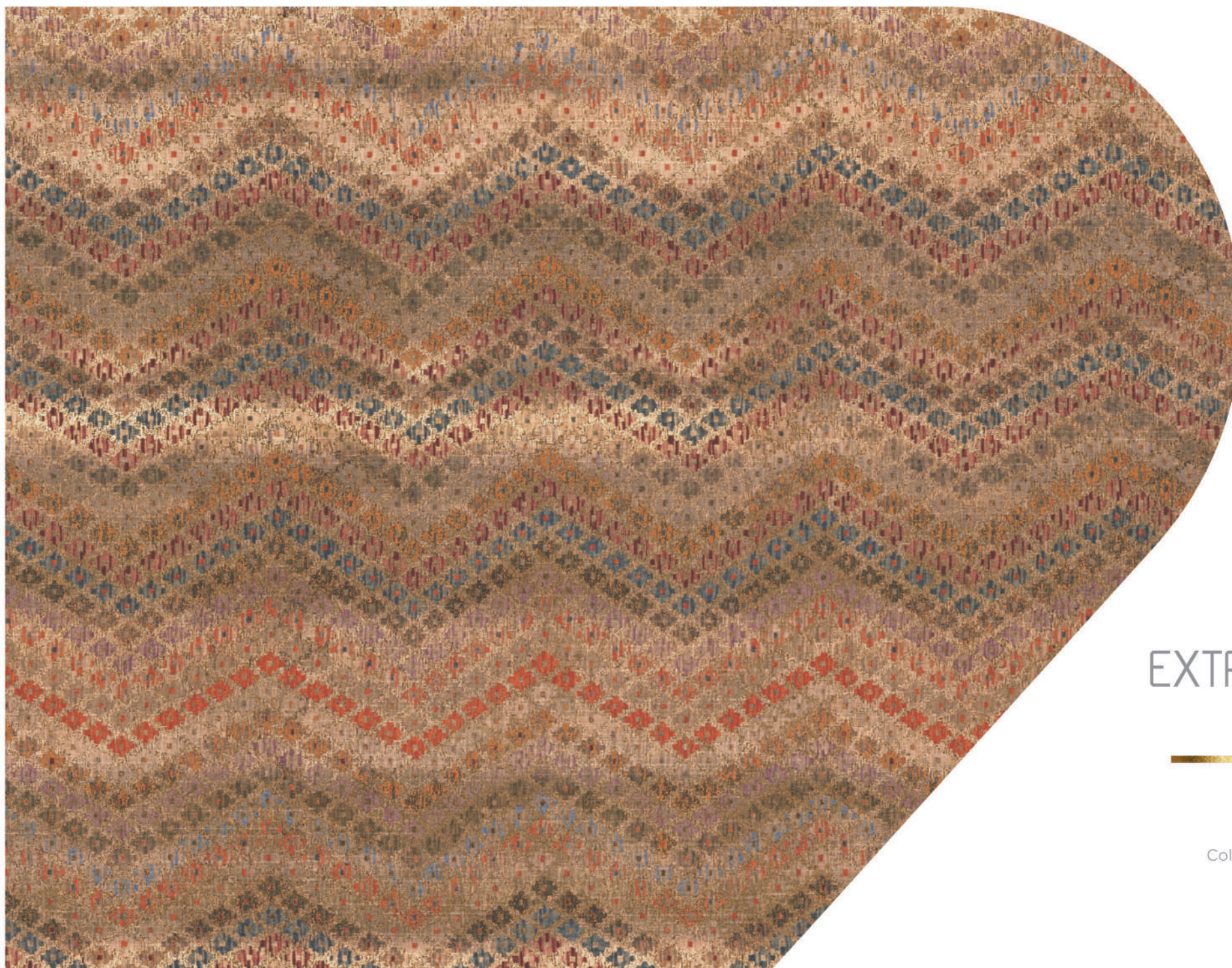
215 SMT | DESERT TAUPE 



215 SGL | DESERT TAUPE 



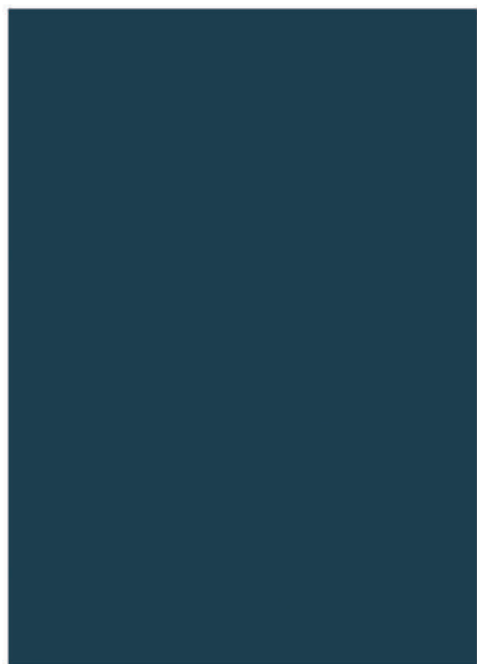
215 RS | DESERT TAUPE 



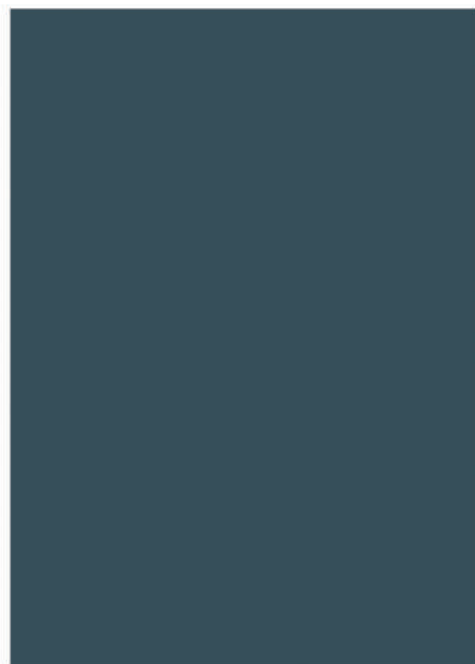
EXTRAORDINARY  
SURFACES,  
— SUPERIOR  
DESIGNS

Color anchors the overall composition  
providing a stable backbone for  
furniture placement.

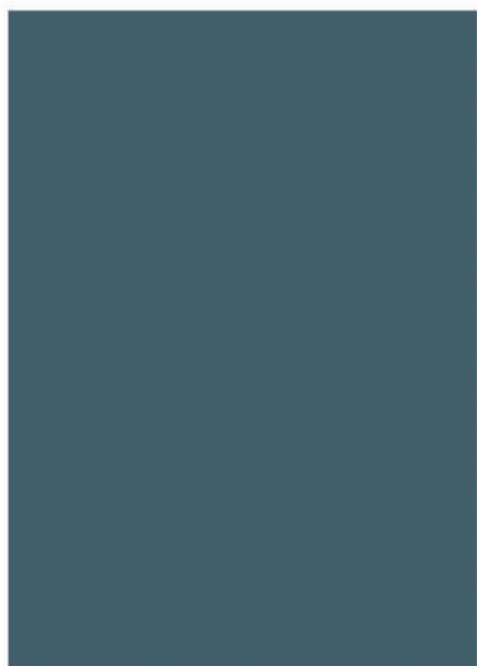
# Prussain Blue



214 SGL | PRUSSAIN BLUE



214 SMT | PRUSSAIN BLUE



214 ZMT | PRUSSAIN BLUE



214 RS | PRUSSAIN BLUE



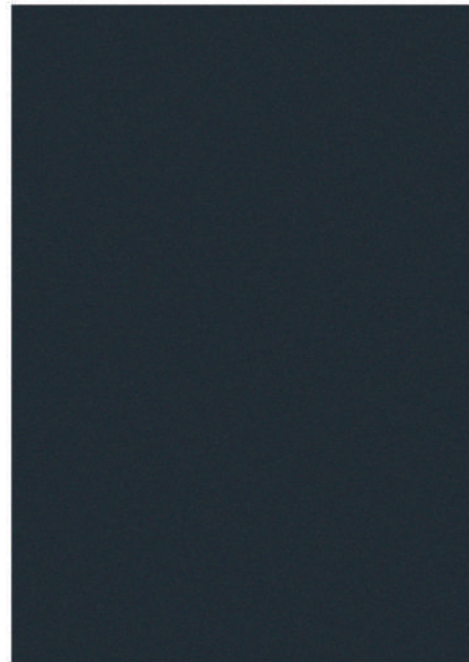
## OPULENT FORMS OF WONDER

The color field stays unobtrusive allowing textures to stand out and natural details to breathe.

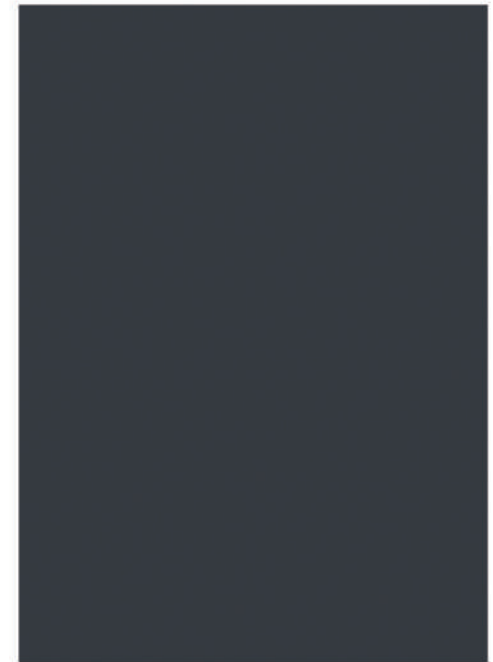




# Pebble Grey



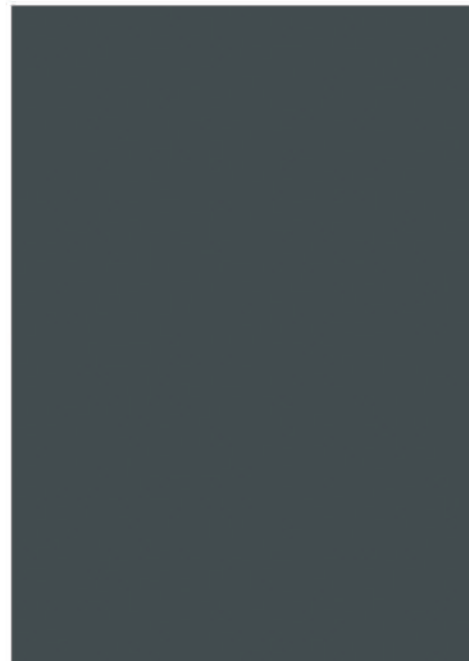
216 SGL | PEBBLE GREY



216 ZMT | PEBBLE GREY



70  
71



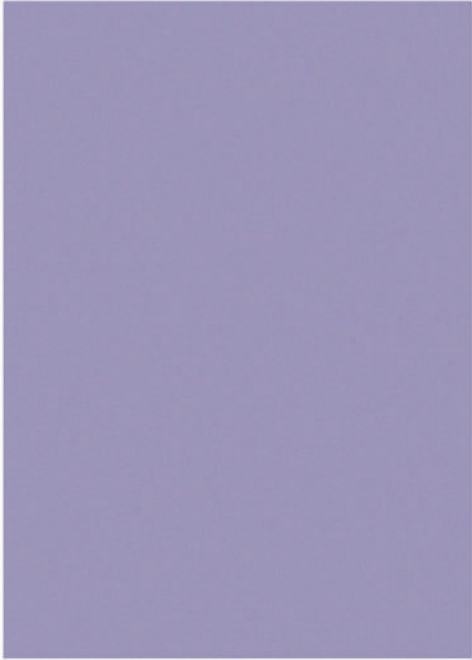
216 SMT | PEBBLE GREY



216 KOZA | PEBBLE GREY



# Soothing Mauve



221 SGL | SOOTHING MAUVE 



221 ZMT | SOOTHING MAUVE 

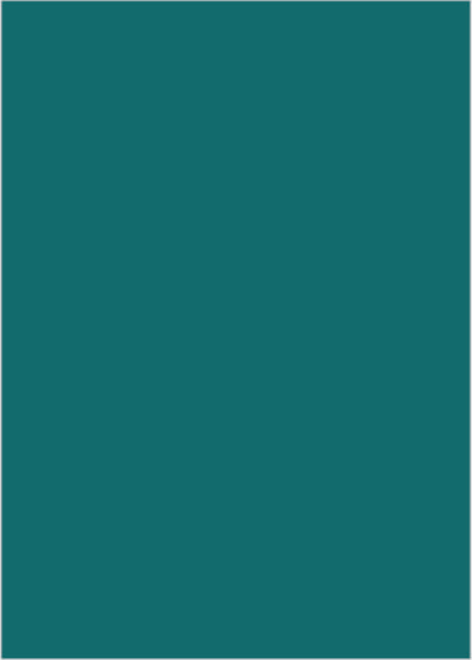


221 SMT | SOOTHING MAUVE 

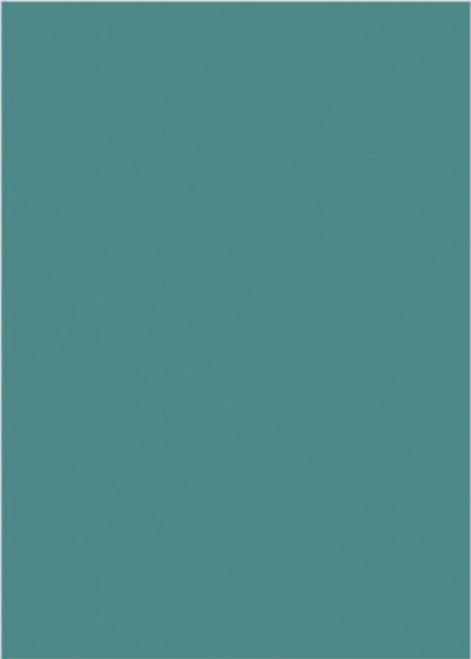
UBER  
CHIC   
DÉCOR  
IDEAS

# Ocean Blue

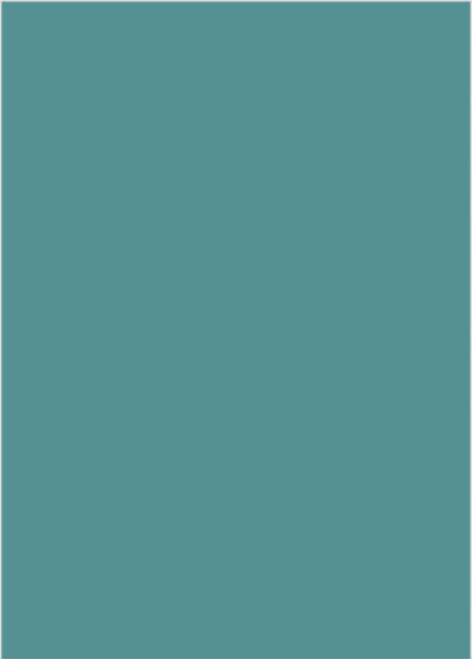
Subtle color helps  
textiles stand out  
providing a gentle  
contrast for soft  
furnishings



219 SGL | OCEAN BLUE 

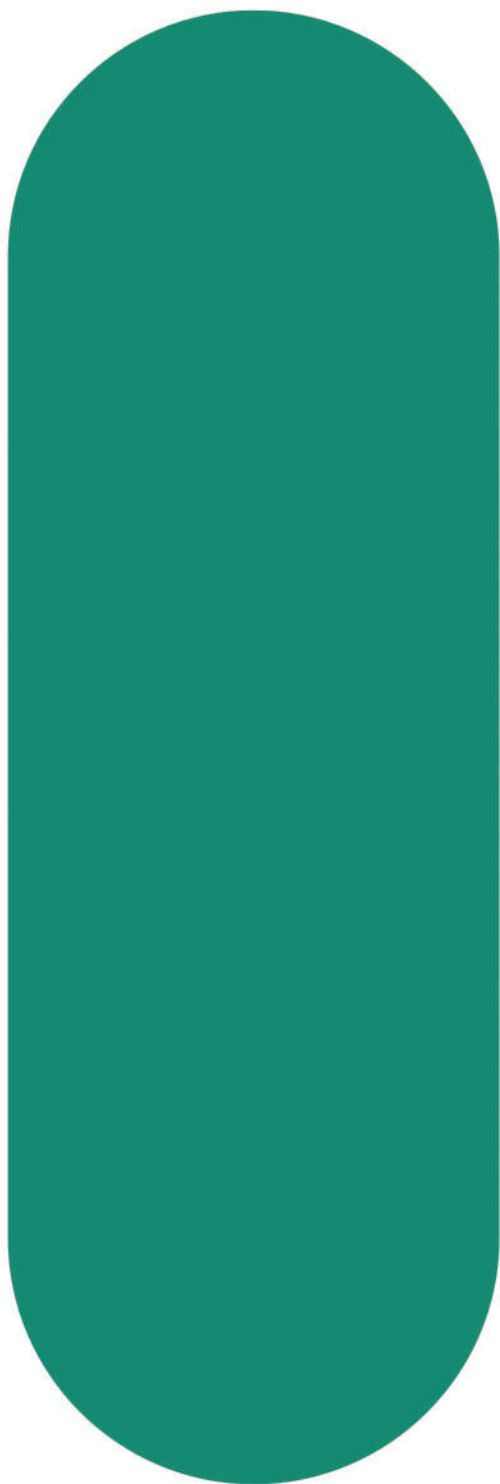


219 ZMT | OCEAN BLUE 

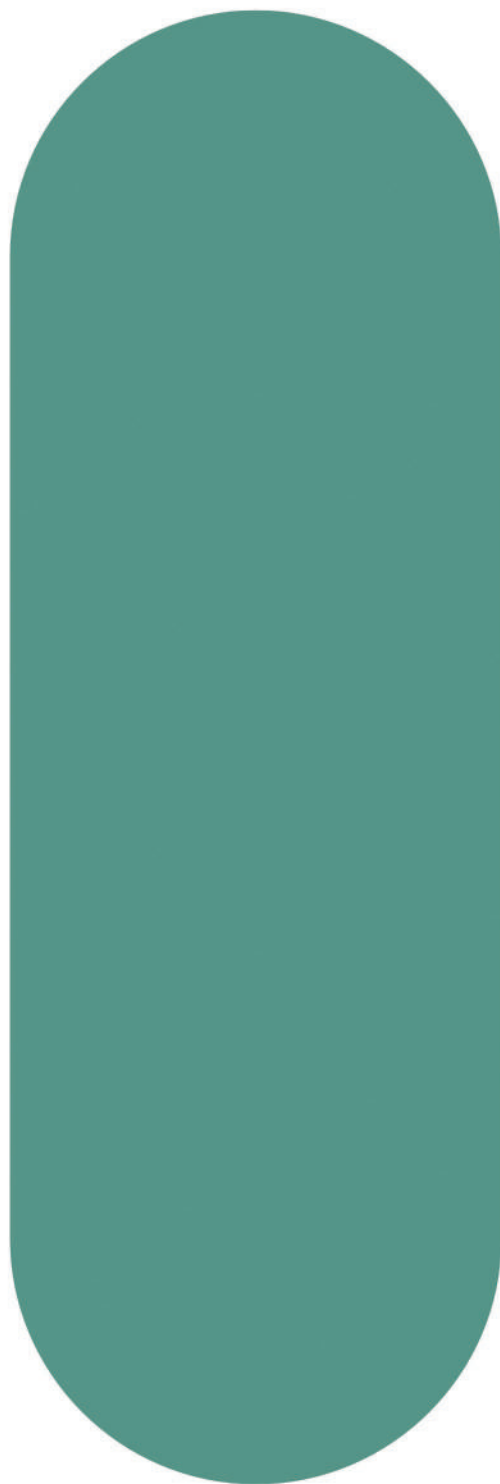


219 SMT | OCEAN BLUE 

# Jungle Green



124 SGL  
JUNGLE GREEN 



124 SMT  
JUNGLE GREEN 

# Flaxen Yellow



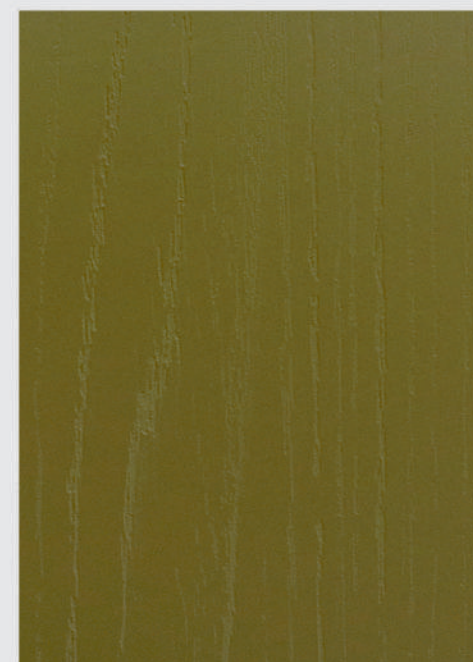
123 SMT | FLAXEN YELLOW 



123 ZMT | FLAXEN YELLOW 



123 SGL | FLAXEN YELLOW 



123 CZ | FLAXEN YELLOW 

# Black



108 SMT | BLACK



108 SGL | BLACK



108 ZMT | BLACK



108 LTR | BLACK

The mood is inclusive and welcoming,  
open to diverse styles, inviting for guests.



# Seaweed Green



217 KOZA | SEAWEED GREEN 



217 SMT | SEAWEED GREEN 

CONTEMPORARY  
INTERIORS,  
EXPLICIT  
STYLE 



217 SGL | SEAWEED GREEN 

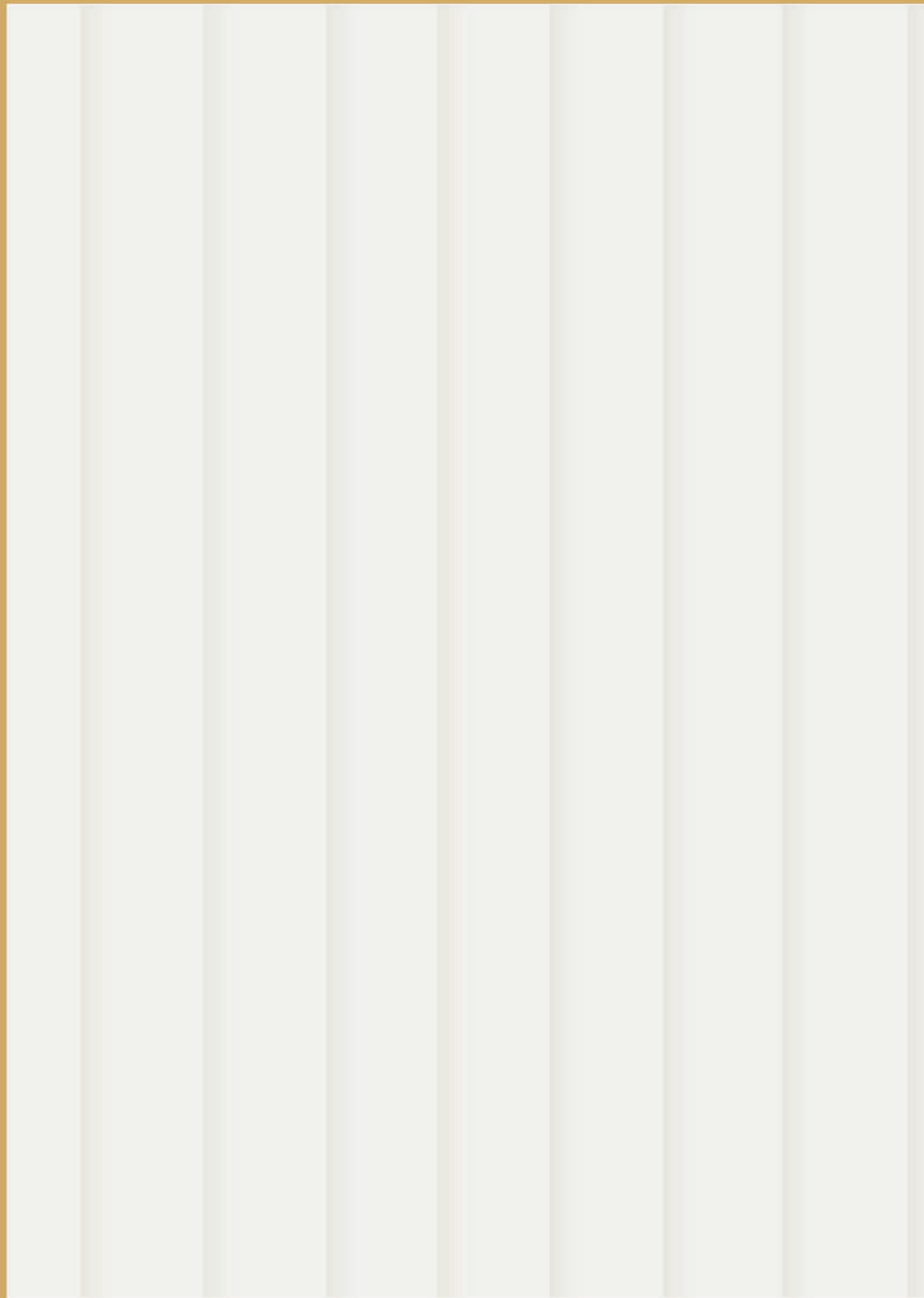


217 ZMT | SEAWEED GREEN 



1.25mm exclusive

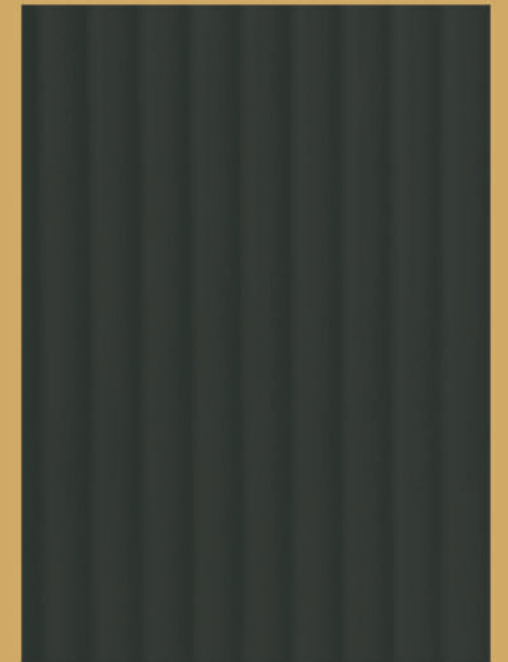
ALSO AVAILABLE  
EDGE BAND



242 RFT | CLOUD GREY



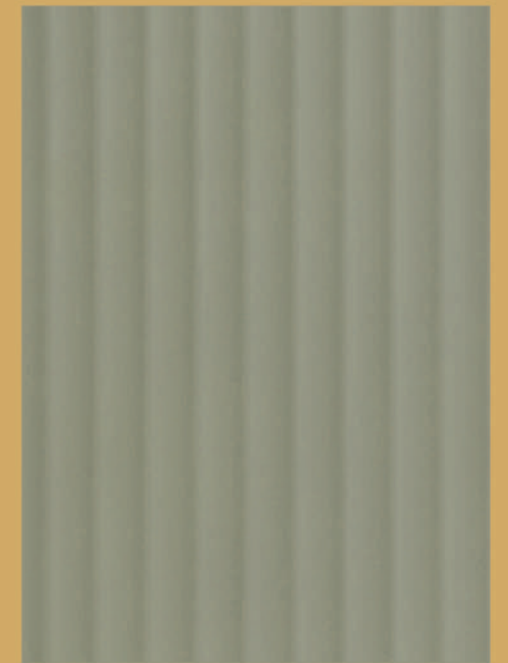
101 RFT | WINTER WHITE



212 RFT | SMOKE GREY



222 RFT | SEAFOAM GREEN



224 RFT | LATTE BROWN



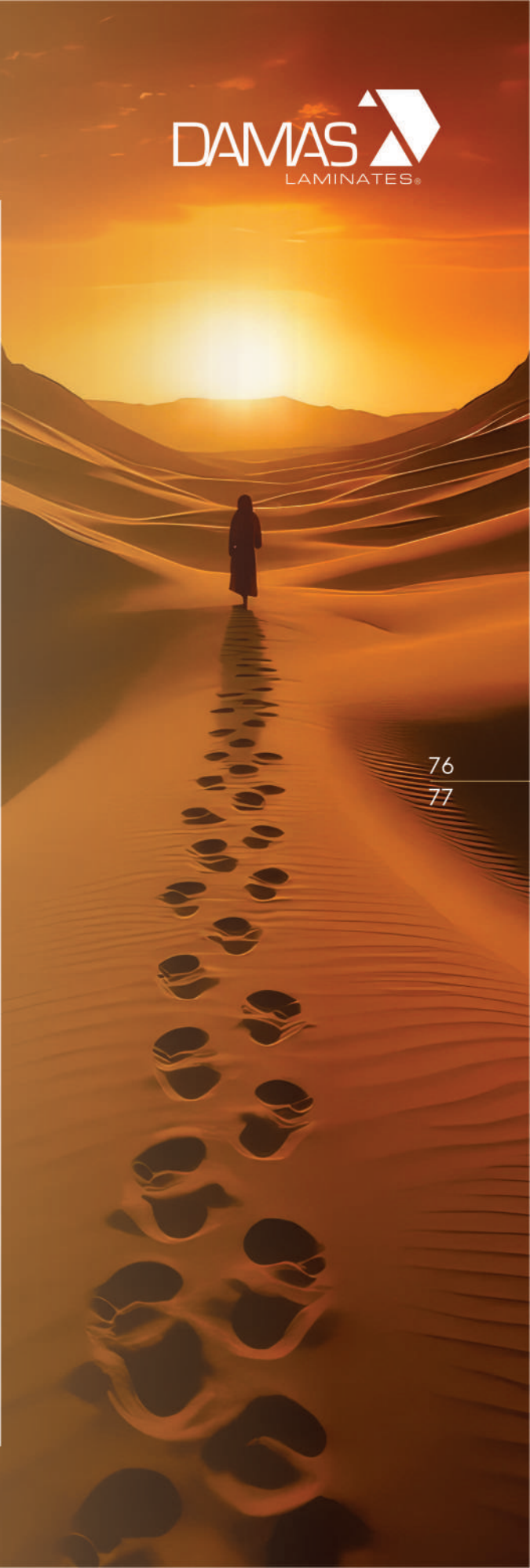


227 RFT | BABY BLUE



# INTRIGUING AND ——— ALLURING FORMS

The finish keeps a soft, even tone uniform across surfaces reducing visual noise.



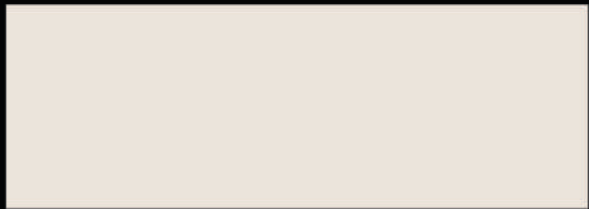
Super Matt



101 SMT



218 SMT



242 SMT



211 SMT



106 SMT



224 SMT



RESPLENDENT  
AND ———  
FABULOUSLY  
ELEGANT



241 SMT



129 SMT



109 SMT



108 SMT



110 SMT

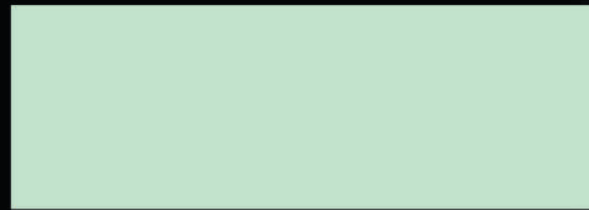


223 SMT

The color plan is practical and durable, designed for real living, aging gracefully with wear.



112 SMT



237 SMT



118 SMT



238 SMT



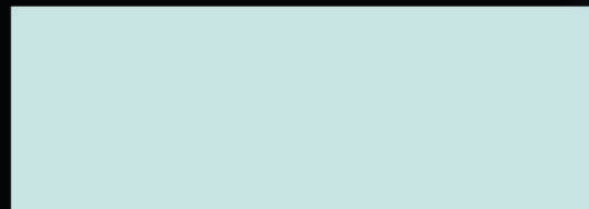
220 SMT



236 SMT



114 SMT



239 SMT



222 SMT



111 SMT



# A FUSION OF TIMELESS SOPHISTICATION

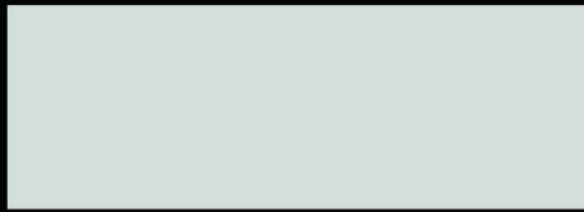
An easy, relaxed color  
story made for  
enduring comfort.

78  
79

Super Matt



103 SMT



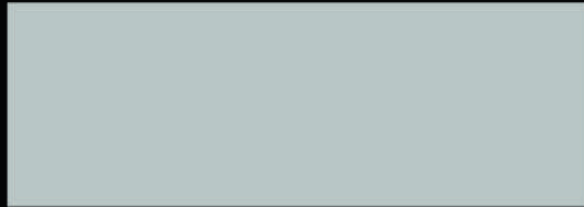
105 SMT



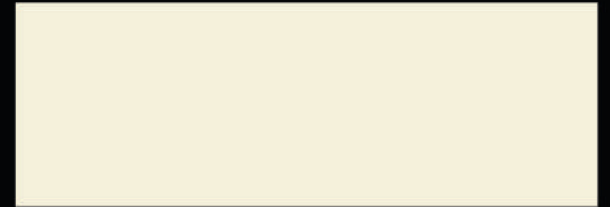
133 SMT



121 SMT



127 SMT



240 SMT



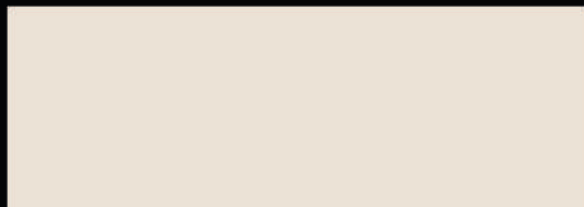
107 SMT



212 SMT



122 SMT



226 SMT



123 SMT



124 SMT



228 SMT



229 SMT



YOUR SIGNATURE  
STATEMENTS  
OF  
STYLE

A steady color base makes changes easy, supports updates without rework, flexible for future decor.



215 SMT



213 SMT



227 SMT



119 SMT



214 SMT



216 SMT



221 SMT



115 SMT



217 SMT



219 SMT



225 SMT



130 SMT



243 SMT



The look feels current without being loud, contemporary but timeless, adaptable to different eras.



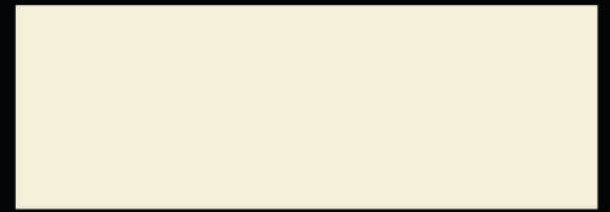
Super High Gloss



101 SGL



103 SGL



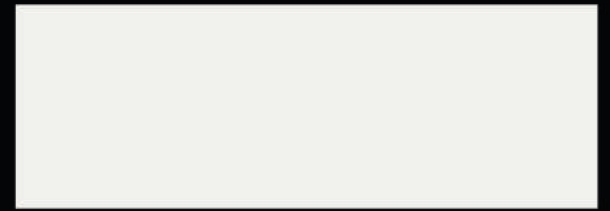
240 SGL



106 SGL



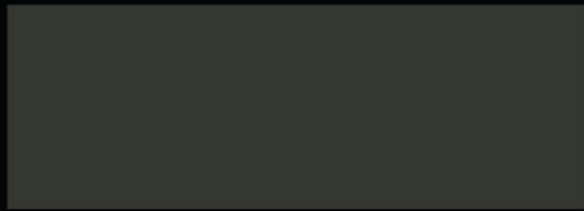
121 SGL



242 SGL



129 SGL



107 SGL



241 SGL



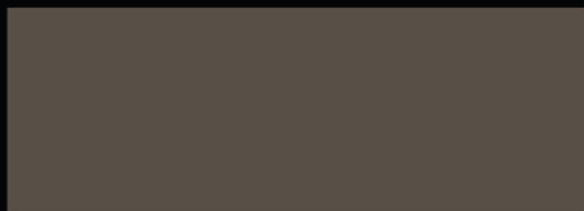
108 SGL



122 SGL



218 SGL



211 SGL



109 SGL



110 SGL

A FUSION  
OF  
TIMELESS  
SOPHISTICATION

An easy, relaxed color  
story made for enduring  
comfort.



215 SGL



112 SGL



227 SGL



118 SGL



214 SGL



220 SGL



221 SGL



114 SGL



225 SGL



222 SGL



217 SGL

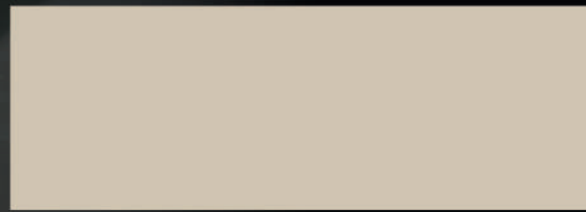


239 SGL

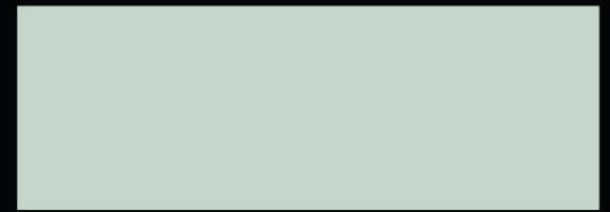


82  
83

Super High Gloss



133 SGL



105 SGL



228 SGL



127 SGL



229 SGL



212 SGL



123 SGL



226 SGL



124 SGL



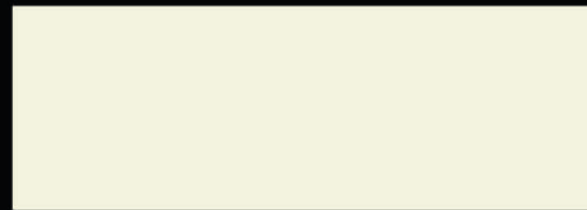
224 SGL



223 SGL



213 SGL



312 SGL



119 SGL



313 SGL



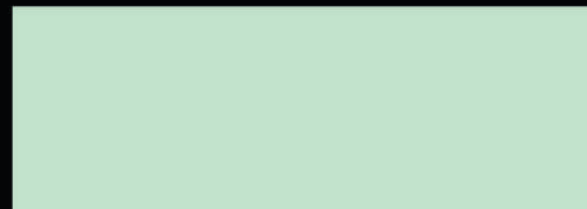
216 SGL



315 SGL



130 SGL



237 SGL



115 SGL



238 SGL



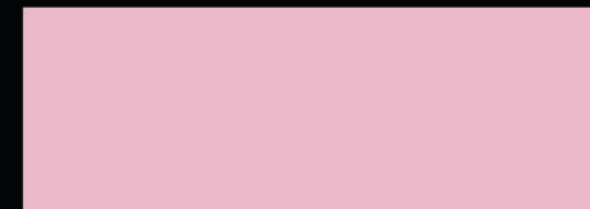
219 SGL



111 SGL



236 SGL



243 SGL



## ETHEREAL AND VIBRANT SURFACES

The overall effect is  
harmonious, balanced  
between elements,  
calm and pleasing.

# Index

DESIGN NO	FINISH	PAGE NO	DESIGN NO	FINISH	PAGE NO	DESIGN NO	FINISH	PAGE NO	DESIGN NO	FINISH	PAGE NO	DESIGN NO	FINISH	PAGE NO	DESIGN NO	FINISH	PAGE NO	DESIGN NO	FINISH	PAGE NO	DESIGN NO	FINISH	PAGE NO
01	OMB	7	103	SMT	80	119	SMT	81	211	SMT	58	218	FRO	26	224	VTC	47	236	SGL	15	241	SGL	38
01	MT	24	103	SGL	82	119	SGL	85	211	SMT	78	218	PKR	28	224	ZMT	47	236	TRY	25	241	VLY	38
01	HLT	24	105	SMT	56	121	SMT	80	211	SGL	82	218	PKR	62	224	SGL	47	236	SGL	39	241	ACT	38
01	TRY	25	105	SGL	56	121	SGL	82	212	RS	27	218	SGL	62	224	CW	47	236	TRY	39	241	SMT	78
01	OMB	36	105	LTR	56	122	SGL	59	212	SMT	35	218	FRO	62	224	RFT	76	236	SMT	39	241	SGL	82
02	OMB	8	105	SMT	80	122	LTR	59	212	LTR	46	218	ZMT	62	224	SMT	78	236	SMT	79	242	SMT	12
02	MT	24	105	SGL	84	122	SMT	59	212	ZMT	46	218	SMT	62	224	SGL	84	236	SGL	85	242	SGL	14
02	HLT	24	106	FRO	26	122	SMT	80	212	RS	46	218	SMT	78	225	FRO	26	237	SGL	7	242	FLR	19
02	TRY	25	106	PKR	28	122	SGL	82	212	STN	46	218	SGL	82	225	ZMT	48	237	SMT	12	242	RCH	30
02	OMB	38	106	BK	53	123	CZ	73	212	SGL	46	219	ZMT	72	225	SGL	48	237	SGL	15	242	FLR	34
03	OMB	8	106	SMT	53	123	SMT	73	212	SMT	46	219	SMT	72	225	SMT	48	237	FLR	18	242	SMT	34
03	MT	24	106	PKR	53	123	SGL	73	212	RFT	76	219	SGL	72	225	FRO	48	237	SMT	37	242	RCH	34
03	TRY	25	106	ZMT	53	123	ZMT	73	212	SMT	80	219	SMT	81	225	SMT	81	237	SGL	37	242	SGL	34
03	OMB	34	106	SGL	53	123	SMT	80	212	SGL	84	219	SGL	85	225	SGL	83	237	FLR	37	242	RFT	76
04	OMB	8	106	FRO	53	123	SGL	84	213	RS	27	220	CW	49	226	CW	60	237	SMT	79	242	SMT	78
04	OMB	49	106	SMT	78	124	SGL	73	213	SMT	68	220	SGL	49	226	SMT	60	237	SGL	85	242	SGL	82
05	OMB	8	106	SGL	82	124	SMT	73	213	SGL	68	220	SMT	49	226	SGL	60	238	SMT	13	243	SMT	13
05	OMB	39	107	MRF	20	124	SMT	80	213	RS	68	220	SMT	79	226	ZMT	60	238	SGL	15	243	SGL	15
06	OMB	9	107	VTC	31	124	SGL	84	213	SMT	81	220	SGL	83	226	SMT	80	238	FLR	18	243	SMT	49
06	OMB	41	107	ZMT	57	127	SGL	54	213	SGL	85	221	ZMT	72	226	SGL	84	238	FLR	36	243	SGL	49
07	OMB	9	107	LTR	57	127	ZMT	54	214	RS	27	221	SGL	72	227	MRF	20	238	SMT	36	243	SMT	81
07	OMB	46	107	VTC	57	127	SMT	54	214	SMT	70	221	SMT	72	227	PKR	28	238	SGL	36	243	SGL	85
101	MRF	20	107	MRF	57	127	SMT	80	214	ZMT	70	221	SMT	81	227	VTC	31	238	SMT	79	312	TRY	25
101	FRO	26	107	SMT	57	127	SGL	84	214	SGL	70	221	SGL	83	227	SMT	33	238	SGL	85	312	KOZA	50
101	PKR	28	107	SGL	57	129	VLY	29	214	RS	70	222	TRY	25	227	CW	65	239	SMT	12	312	SGL	50
101	VLY	29	107	SMT	80	129	RCH	30	214	SMT	81	222	PKR	28	227	PKR	65	239	SGL	14	312	TRY	50
101	RCH	30	107	SGL	82	129	SMT	55	214	SGL	83	222	VTC	31	227	VTC	65	239	ACT	16	312	SGL	85
101	VTC	31	108	SMT	74	129	CW	55	215	SMT	23	222	SMT	66	227	MRF	65	239	TRY	25	313	KOZA	51
101	SMT	42	108	LTR	74	129	SGL	55	215	RS	27	222	VTC	66	227	ZMT	65	239	SGL	41	313	SGL	51
101	SGL	42	108	ZMT	74	129	VLY	55	215	SGL	68	222	TRY	66	227	SMT	65	239	TRY	41	313	SGL	85
101	BK	42	108	SGL	74	129	RCH	55	215	RS	68	222	SGL	66	227	SGL	65	239	SMT	41	315	SGL	51
101	RCH	42	108	SMT	78	129	ZMT	55	215	ZMT	68	222	ZMT	66	227	RFT	77	239	ACT	41	315	KOZA	51
101	FRO	42	108	SGL	82	129	SMT	78	215	SMT	68	222	PKR	66	227	SMT	81	239	SMT	79	315	SGL	85
101	VTC	42	109	SMT	78	129	SGL	82	215	SMT	81	222	STN	67	227	SGL	83	239	SGL	83	421	ACR	21
101	KOZA	42	109	SGL	82	130	SMT	81	215	SGL	83	222	RFT	76	228	SMT	45	240	SMT	12	422	ACR	21
101	MRF	43	110	SMT	78	130	SGL	85	216	ZMT	71	222	SMT	79	228	CW	45	240	SGL	14	423	ACR	21
101	VLY	43	110	SGL	82	133	MRF	20	216	KOZA	71	222	SGL	83	228	SGL	45	240	ACT	17	424	ACR	21
101	PKR	43	111	SMT	79	133	SGL	60	216	SGL	71	223	SGL	63	228	SMT	80	240	SMT	40	425	ACR	21
101	LTR	43	111	SGL	85	133	SMT	60	216	SMT	71	223	ZMT	63	228	SGL	84	240	SGL	40	426	ACR	21
101	RFT	76	112	SMT	79	133	MRF	60	216	SMT	81	223	KOZA	63	229	MRF	20	240	ACT	40	427	ACR	21
101	SMT	78	112	SGL	83	133	SMT	80	216	SGL	85	223	SMT	63	229	SGL	44	240	SMT	80	428	ACR	21
101	SGL	82	114	SMT	79	133	SGL	84	217	KOZA	75	223	SMT	78	229	SMT	44	240	SGL	82	748	SMT	69
103	SMT	52	114	SGL	83	211	SMT	11	217	SMT	75	223	SGL	84	229	BK	44	241	SMT	13	749	SMT	11
103	ZMT	52	115	SMT	81	211	ZMT	58	217	SGL	75	224	VLY	29	229	MRF	44	241	SGL	15	750	FB	64
103	LTR	52	115	SGL	85	211	CW	58	217	ZMT	75	224	VTC	31	229	SMT	80	241	ACT	17	752	SMT	61
103	STN	52	118	SMT	79	211	SGL	58	217	SMT	81	224	SMT	47	229	SGL	84	241	VLY	29	753	FB	33
103	SGL	52	118	SGL	83	211	KOZA	58	217	SGL	83	224	VLY	47	236	SMT	13	241	SMT	38	754	FB	23
																					755	VN	35

All the colour which are marked in light blue are 1.25 mm

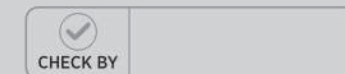
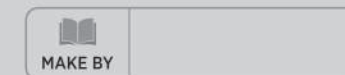
PROPERTIES	SPECIFIED VALUES AS PER IS 2046-1995 TYPE S,VGS	DAMAS CONFORMS
Thickness	1.0mm (± 10%)	1.0mm (± 10%)
Resistance to surface wear	> 150(revolutions)	✓
Resistance to immersion in boiling water		
-Mass increase (%)	10.0%(Max)	✓
-Thickness increase	11.8%(Max)	✓
-Appearance	Not worse than 4	✓
Dimensional stability at deviated temperature		
-Longitudinal (%)	0.55% (Max)	✓
-Transverse (%)	1.025%(Max)	✓
Dimensional stability at 200 degree C		
-Longitudinal (%)	0.375%(Max)	✓
-Transverse (%)	0.60% (Max)	✓
Resistance to impact by small diameter ball	20 N (Min)	✓
Resistance to cracking	Not worse than 4	✓
Resistance to scratching	1.75 N (Min)	✓
Resistance to staining	Not worse than 5	✓
Resistance to color change (Wool standard)		
- In Xenon ARC light	Not worse than 6	✓
- In Enclose Carbon ARC light	Not worse than 5	✓
Resistance to steam	Not worse than 4	✓
Appearance	Should be Free From foreign particles	✓

## Notes:

- It is recommended to check the laminate sheet before fixing.
- No complaint shall be entertained on laminates already fixed.
- In case of any complaint, the company's liability is limited to the cost of the laminate sheet only.
- DAMAS Laminates reserves the right to delete, amend either totally or partially, any of the design, finishes, references and other technical specifications contained in this catalogue at any time.
- The sample Swatches in the catalogue shows Color Pattern and finishes only. It does not show the actual thickness of the product.

## Notes:

1. लैमिनेट लगाने से पहले पूरी तरीके से जाँच ले।
2. लैमिनेट लगाने के बाद बबल, क्लर और दरार की कंपनी की कोई गारंटी नहीं रहेगी।
3. कोई भी परिस्थिति में कंपनी की वारंटी लैमिनेट तक सीमित होगी।



## APPLICATION GUIDELINES

### CAUSES AND RECOMMENDATION FOR AVOIDING FAILURES ARE:

- USE GOOD QUALITY PLYWOOD AND ADHESIVE
- THE SURFACE TO BE BONDED SHOULD BE FREE FROM OIL/GREASE/DUST AND EXCESS MOISTURE
- INSUFFICIENT AMOUNT OF ADHESIVE ON EITHER OR BOTH THE SURFACE TO BE BONDED

When ready for bonding the spread film of most contact adhesive will exhibit a uniform semi-gloss appearance over the entire surface of the material to be bonded. Marked variation in appearance will generally indicate an improper or non-uniform bonding in those areas where insufficient adhesive has been applied. If this occurs, re-coating the surface should achieve a uniform coating. Double coating the edges with adhesive is advisable because of the higher porosity of the substrate edge.

### - INSUFFICIENT BONDING PRESSURE

To ensure intimate contact necessary for an adequate bond, sufficient pressure should be applied over the entire area using as much pressure as possible without damaging the assembly. Pinch rollers (rotary press) and heavy weighted rollers are ideal. Hand pressure rolling is adequate, provided the operator exerts maximum pressure by means of a two-handled or single long-handled roller. The rollers should be of steel or hard solid rubber (50-80 diameter) and not over 75mm (3 inches) wide. Hand rolling should be repeated twice.

### - BONDING WHEN ADHESIVE SURFACE IS OVER-DRY OR UNDER-DRY

Care should be taken to follow the manufacturer's recommendations concerning the allowable tack range of the adhesive. If the assembly is done before the adhesive is dry or after the allowable open time is exceeded, then the bonding result may be unsatisfactory.

### - BONDING OF SURFACE UNDER 21 deg. C ( 70 deg. F)

Unless otherwise indicated by the manufacturer the temperature of the gluing area and all materials should be 21 deg. C (70 deg. F) or above.

### - BONDING OF SURFACE WHERE HUMIDITY IS TOO HIGH

Experience has shown that when the relative humidity is above 80 percent at temperatures of 21 deg. C (70 deg. F) or lower moisture may condense on the surface during drying (Known as "blushing ") and will prevent an acceptable bond. Hot spray or forced air drying may be used to prevent this condition.

### - IMPROPERLY PREPARED OR DIRTY GLUING SURFACES

The surfaces should be clear, dry and free of oils or other contaminants, such as dust, loose sand particles, and so forth. The adhesive film should have full contact with the surface to which it is applied in order to give maximum adhesion.

### - FIELD BONDING OF OVERSIZED SHEETS

It is recommended that the maximum sheet size used for vertical field application be limited to 610x2400mm (2x8 Feet). If larger panels are required, these should be fabricated in the shop.

### - UNDER PRESSURE

After bonding, even pressure of 100 gm/ sq.ft. must be maintained for 6 to 8 hours.



**Damas Laminates Pvt. Ltd.**

Survey No. : 668, At. & Post: Ghadkan,  
Majara-Talod Road, Tal.: Prantij-383 205,  
Dist.: Sabarkantha, Gujarat, India.

☎ +91 2770 255170  
📱 +91 80002 16570  
✉ info@damaslam.com



SCAN QR TO DOWNLOAD  
E-CATALOGUE