



DW

DYED
wood

DYED *wood*

PREMIUM VENEER
COLLECTION 

WE HAVE SEAMLESSLY FUSED THE
SOFT, TACTILE SENSATION OF VELVET
WITH THE ORGANIC DEPTH OF
NATURAL WOOD. WHEN APPLIED TO
SOLID COLOURS, KIYALAM DYED WOOD
UNLOCKS UNIQUE AND SOPHISTICATED
COLOUR EXPRESSIONS, REMINISCENT
OF A LACQUERED VENEER FINISH.

WITH ITS REFINED AESTHETIC, KIYALAM
DYED WOOD STANDS OUT AS A
CUTTING-EDGE MATERIAL ALIGNED
WITH THE LATEST INTERIOR DESIGN
TRENDS. IT OFFERS A UNIQUE
SENSORY EXPERIENCE, DEFINED BY A
DEEP, FULL-BODIED SURFACE AND A
COLOUR THAT APPEARS TO MELT INTO
THE MATERIAL—RICH, IMMERSIVE, AND
ELEGANTLY DENSE.



R3
Legacy that inspire

From the Creator's Desk

We believe that innovation is the heartbeat of progress. Every idea and design is born from a passion to inspire and elevate spaces, turning visions into reality. We are committed to pushing boundaries and exploring new possibilities, ensuring that excellence remains at the core of everything we do. Our journey is driven by a desire to craft products that not only meet but exceed expectations, blending artistry with functionality. We understand that true beauty lies in detail, and precision is our guiding principle. With a focus on sustainability and craftsmanship, we strive to make a positive impact on both our environment and society. Our mission is to inspire creativity and transform spaces into expressions of individuality. As creators, we are dedicated to continuous innovation, never settling for the ordinary. Every project we undertake reflects our passion for quality, design, and the pursuit of excellence.

We believe that great design is a reflection of our commitment to excellence, and each piece we create is a testament to our dedication. Our team of skilled artisans and designers work tirelessly to bring fresh ideas to life, ensuring that every detail is perfect. We embrace challenges as opportunities to learn and grow, constantly evolving to meet the changing needs of our clients. Sustainability is embedded in our process, guiding us to use eco-friendly materials and responsible manufacturing practices. We are passionate about creating products that stand the test of time, combining durability with aesthetic appeal. Our vision extends beyond aesthetics; we aim to foster a culture of innovation that inspires others in the industry. Customer satisfaction remains at the heart of our mission, and we strive to build lasting relationships based on trust and quality. Ultimately, our goal is to leave a positive mark on the world through thoughtful design and sustainable practices, shaping spaces that inspire and endure for generations to come.

Rahul Gupta

Member-Board of Director
Super Hylam Private Limited

CLICK HERE

Interactive

1. Open downloaded e-PDF on any device.
2. Browse through our entire collection right on your fingertips.
3. Like a product or design? Click anywhere on the product to open its dedicated webpage.
4. Here you will find the following details about the

Product you chose:

- Full Sheet View
- Application Preview
- Available Textures
- Technical Details
- Option to send an enquiry

5. You can find the same information about all the products in the PDF by clicking on them.



111 WHW

{LAVA GREY}



111 ZRE

{LAVA GREY}



ARTISTIC *flair*

VIBRANT, COLORED WOOD SURFACES CAN DRAMATICALLY UPLIFT THE AESTHETIC OF ANY SPACE. THEY INTRODUCE A FRESH, ENERGETIC VIBE THAT INSTANTLY GRABS ATTENTION AND SETS A MODERN TONE.



111 SY1

{LAVA GREY}



1071 WHW

{DIOR GREY}



NATURAL *beauty*

BRIGHTLY HUED WOOD FINISHES BRING A LIVELY AND MODERN TOUCH TO INTERIOR DECOR. THEY ARE PERFECT FOR CREATING STATEMENT PIECES THAT REFLECT BOLD DESIGN CHOICES.



1071 SY1

{DIOR GREY}



107 WHW

{DUNE}



SOPHISTICATED *Colors*

ARTISTIC COLORING TECHNIQUES TRANSFORM
NATURAL WOOD INTO EYE-CATCHING STATEMENT PIECES.
THESE TECHNIQUES ADD DEPTH, PERSONALITY,
AND A UNIQUE CHARACTER TO EVERY SURFACE.



107 SY1

{DUNE}



UNIQUE *patterns*

A SPLASH OF BOLD COLOR ON WOOD SURFACES
ADDS DEPTH AND PERSONALITY TO YOUR ENVIRONMENT.
IT CAN TURN A PLAIN ROOM INTO A VIBRANT,
DYNAMIC SPACE FILLED WITH LIFE.



108 WHW



108 ZRE



108 SY1

{ESPRESSO}

{ESPRESSO}

{ESPRESSO}



4016 ZRE

{BLUSH PINK}



CLASSIC *charm*

CUSTOM-COLORED VENEERS ELEVATE FURNITURE AND WALLS WITH THEIR ALLURING APPEAL. THEY OFFER ENDLESS POSSIBILITIES FOR PERSONALIZED AND STYLISH INTERIOR ACCENTS.

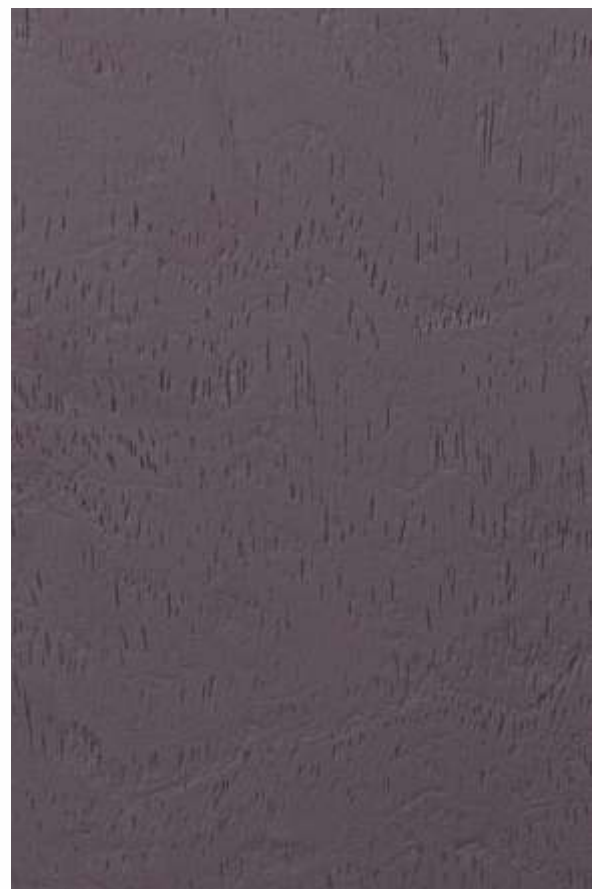


4016 WHW

{BLUSH PINK}



4024 WHW {DARK WINE}

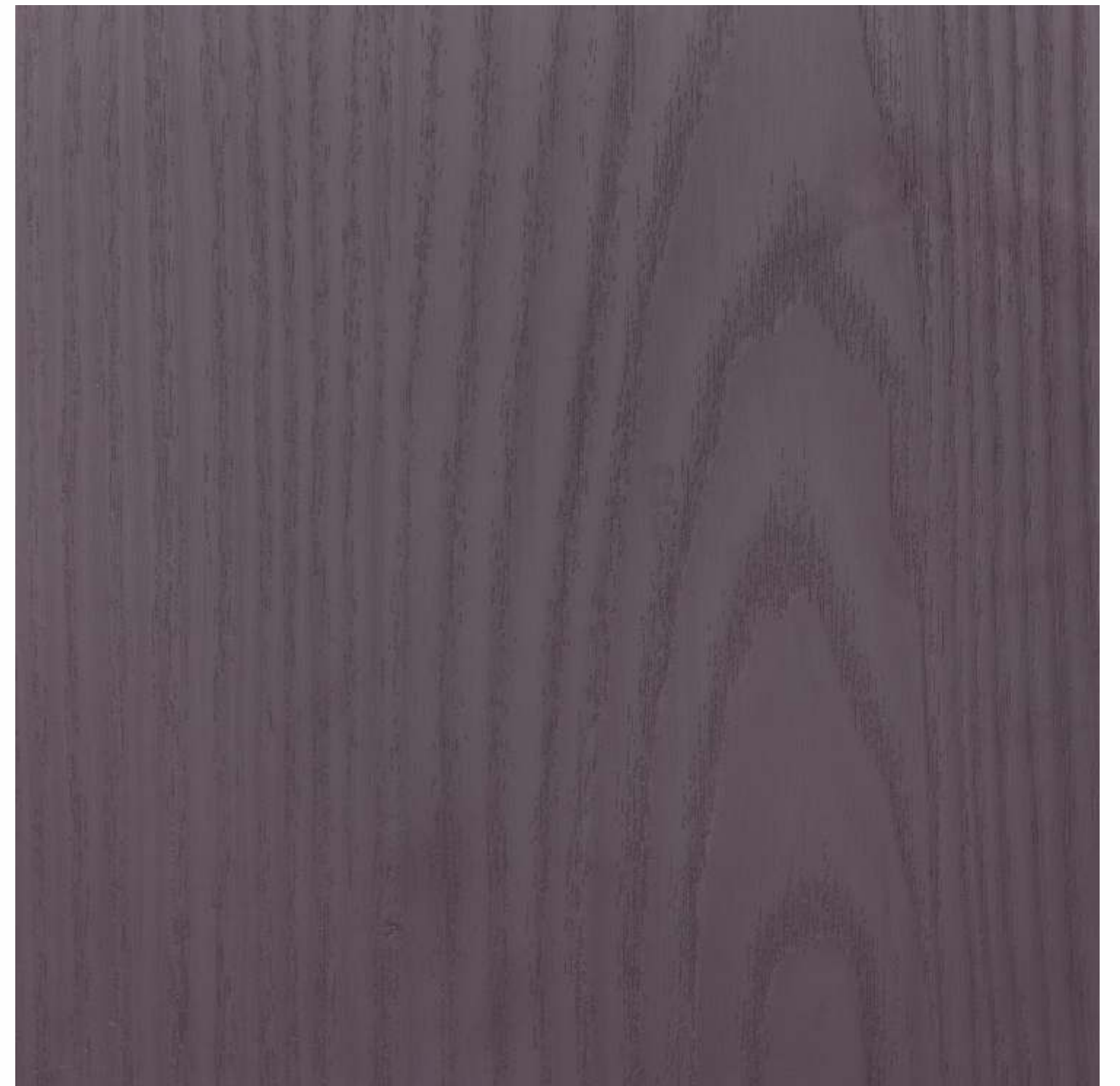


4024 ZRE {DARK WINE}



VIBRANT *hues*

INNOVATIVE STAINING PROCESSES CREATE STRIKING
VISUAL EFFECTS THAT CAPTIVATE THE EYE.
THESE EFFECTS MAKE EACH PIECE A ONE-OF-A-KIND
WORK OF ART, ENHANCING YOUR DECOR'S VISUAL INTEREST.



4024 SY1 {DARK WINE}



4025 WHW

{TURMERIC}



SLEEK *designs*

THE RICH, VIBRANT HUES OF STAINED WOOD ENHANCE BOTH TRADITIONAL AND CONTEMPORARY INTERIORS. THEY BRING WARMTH AND SOPHISTICATION TO ANY SETTING, BLENDING OLD-WORLD CHARM WITH MODERN FLAIR.



4025 SY2

{TURMERIC}



202 SY2

{GREEN BASIL}



BOLD *statements*

COLOR-INFUSED WOOD PANELS TURN ORDINARY SURFACES INTO WORKS OF ART. THEY SERVE AS FOCAL POINTS THAT ELEVATE THE OVERALL DESIGN AESTHETIC OF A ROOM.



202 SY1

{GREEN BASIL}



TIMELESS
elegance

BRIGHT, ARTISTIC FINISHES ON WOOD ELEMENTS CAN REDEFINE YOUR SPACE'S AMBIANCE. THEY EVOKE A SENSE OF CREATIVITY AND ELEGANCE, SETTING A DISTINCTIVE MOOD.



4017 WHW

{ABALONE GREY}



4017 ZRE

{ABALONE GREY}



4017 SY1

{ABALONE GREY}



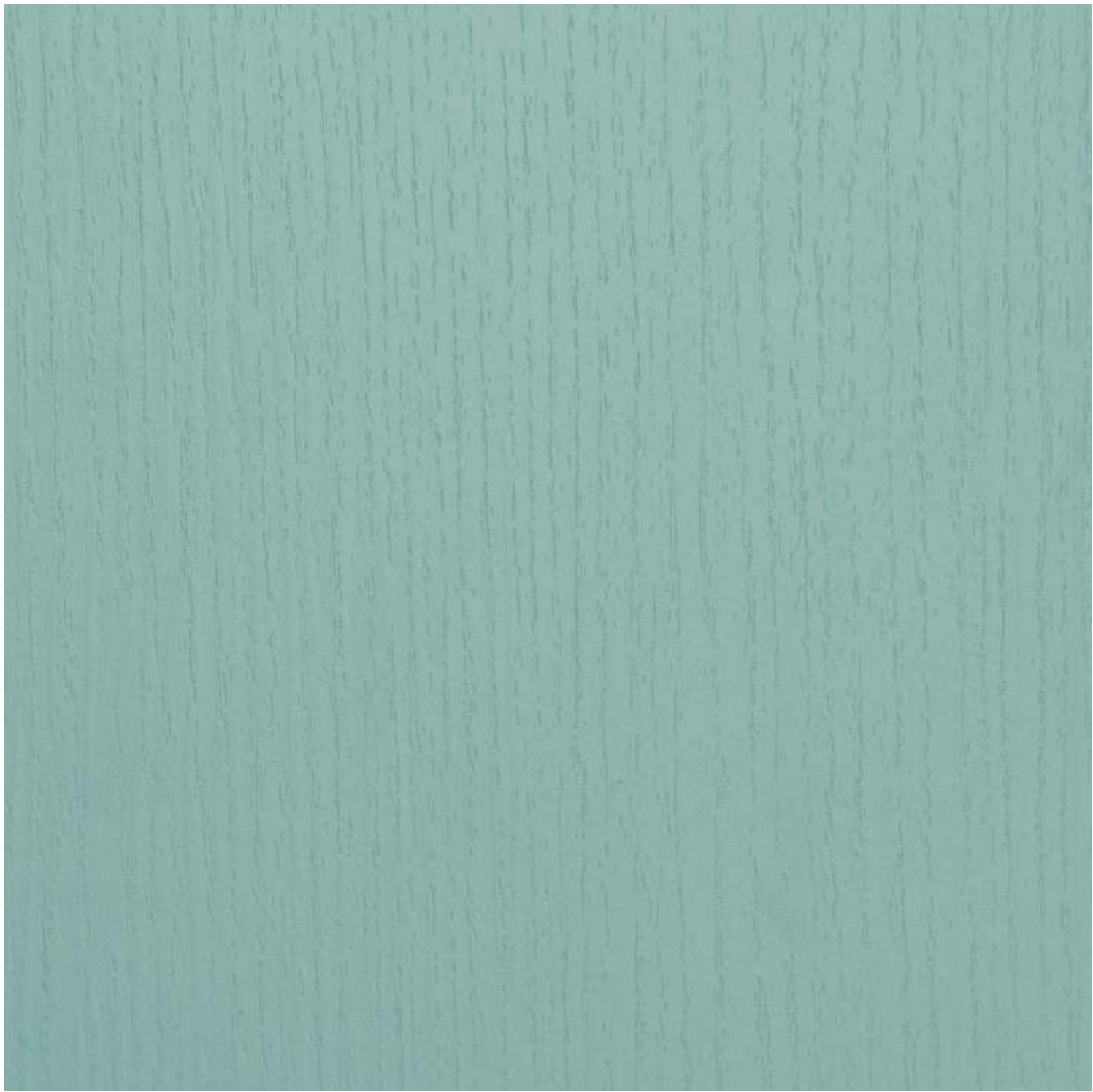
114 ZRE

{MORNING ICE}



CHIO *finishes*

THE ALLURE OF VIBRANTLY COLORED VENEERS LIES
IN THEIR ABILITY TO COMBINE NATURAL TEXTURE
WITH MODERN DESIGN. THIS FUSION CREATES
A HARMONIOUS BALANCE OF NATURE AND INNOVATION.



114 WHW

{MORNING ICE}



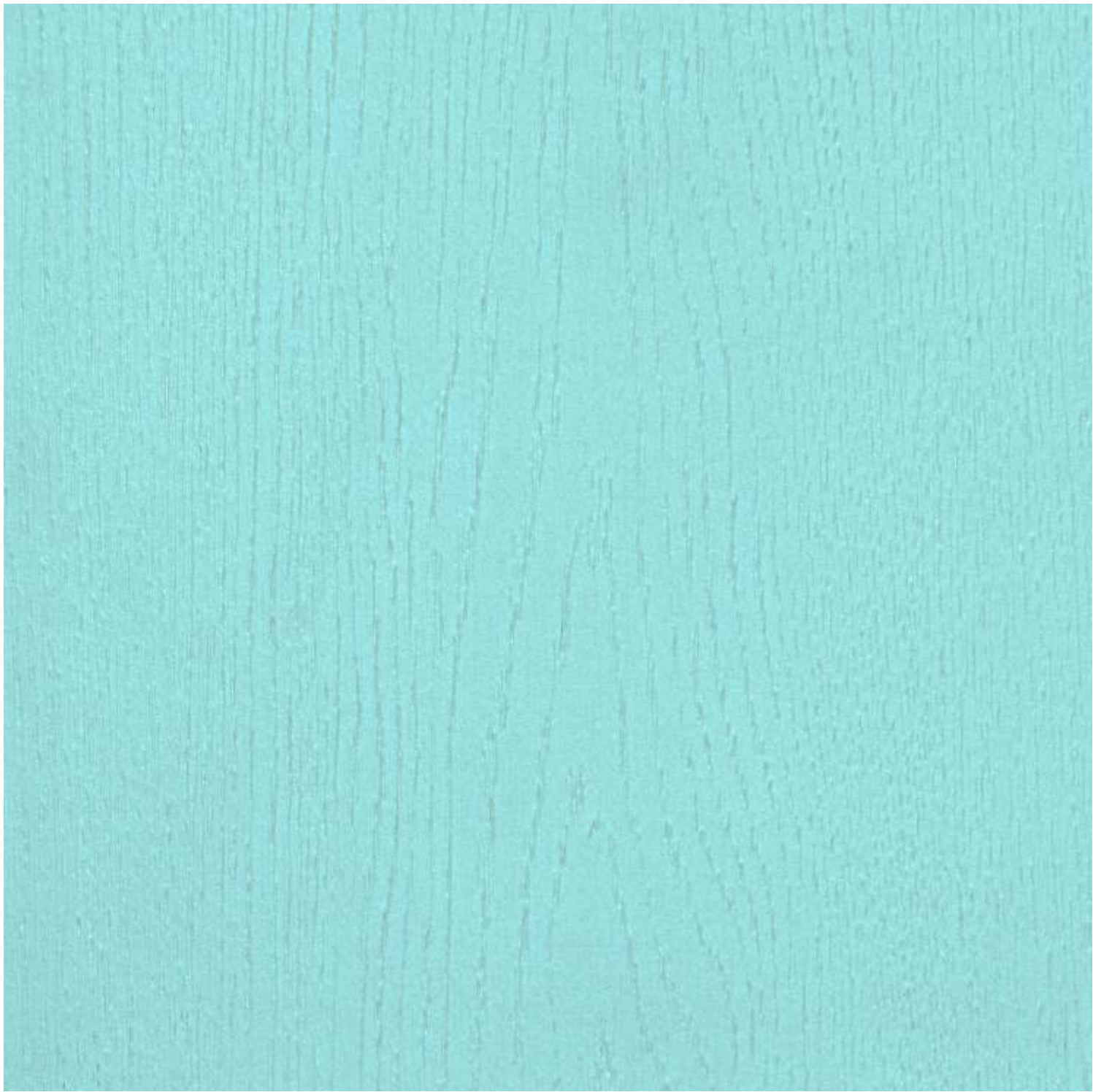
4026 WHW

{AQUA BLUE}



MODERN *touch*

INFUSE YOUR INTERIORS WITH ENERGY THROUGH BEAUTIFULLY TINTED WOOD SURFACES. THEY ENERGIZE THE SPACE AND ADD AN ELEMENT OF SURPRISE AND SOPHISTICATION.



4026 SY2

{AQUA BLUE}



1242 ZRE

{JADE BLUE}



STYLISH *textures*

BOLDLY COLORED WOOD PANELS SERVE AS
STUNNING FOCAL POINTS IN ANY ROOM.
THEY DRAW ATTENTION AND CREATE A MEMORABLE
VISUAL IMPACT THAT ENHANCES THE OVERALL DECOR.



1242 WJZ

{JADE BLUE}



117 WHW

(PEARL BLUE)



ARTISTIC Layers

THE CREATIVE USE OF STAINED WOODS CAN BRING WARMTH AND VIBRANCY TO YOUR DECOR. THESE HUES COMPLEMENT VARIOUS DESIGN STYLES, FROM RUSTIC TO CONTEMPORARY.



117 WJW

(PEARL BLUE)



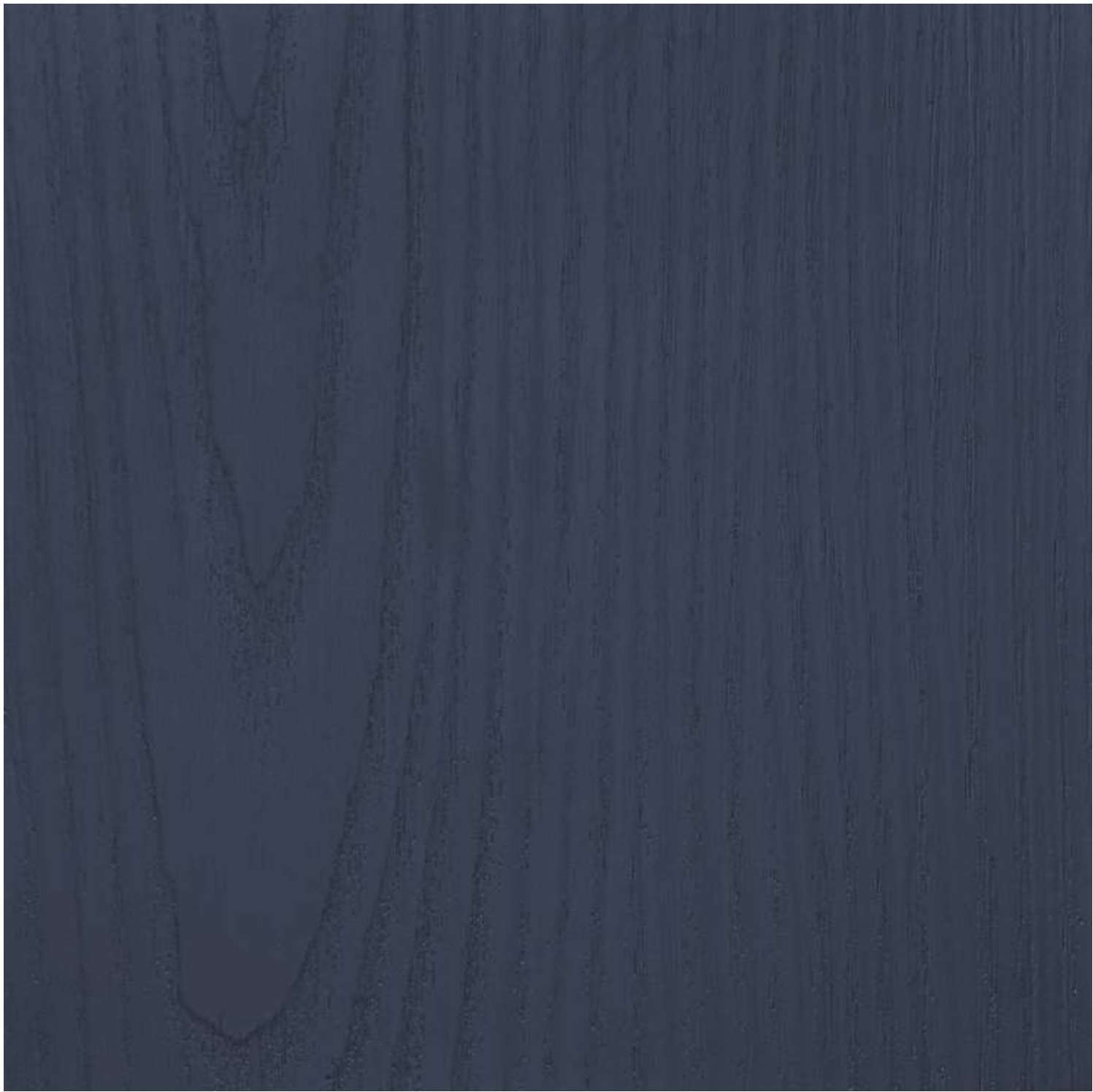
118 WHW

(VIOLET ASH)



LUXE *surfaces*

A PALETTE OF ARTISTIC STAINS TRANSFORMS WOODEN SURFACES INTO CAPTIVATING VISUAL STATEMENTS. IT ALLOWS FOR CUSTOMIZATION, MAKING EACH PIECE TRULY UNIQUE.



118 SY1

(VIOLET ASH)



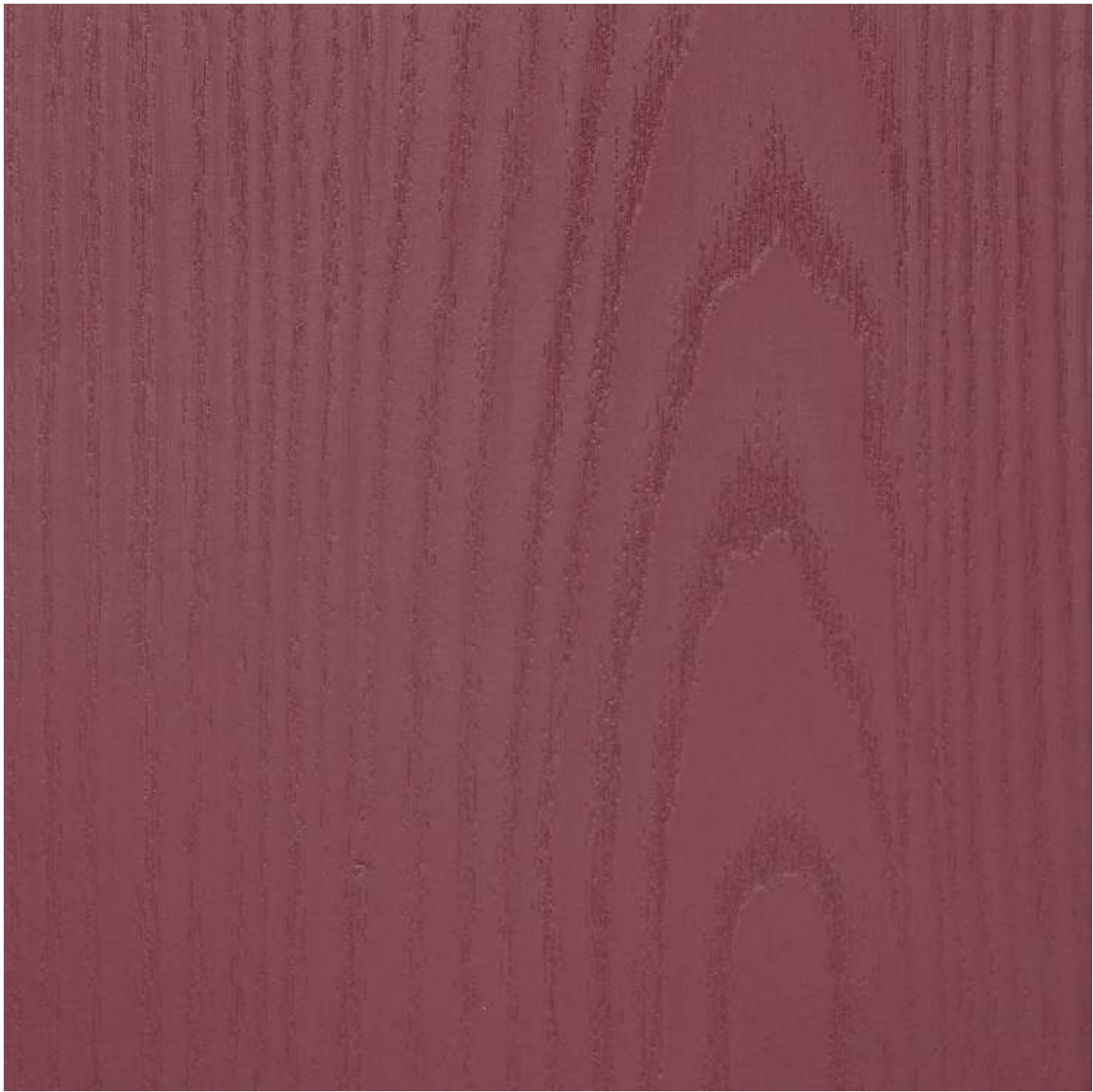
201 WHW

{ROSSO PINK}



ELEGANT *accents*

BRIGHTLY TINTED VENEERS ADD A LAYER OF SOPHISTICATION AND UNIQUENESS TO FURNITURE PIECES. THEY ELEVATE SIMPLE DESIGNS INTO LUXURIOUS, EYE-CATCHING CREATIONS.



201 SY1

{ROSSO PINK}



INDEX

Design No.	Finish	Pg. No.
111	WHW	4
111	ZRE	4
111	Sy1	5
1071	WHW	6
1071	Sy1	7
107	WHW	8
107	Sy1	9
108	WHW	10
108	ZRE	10
108	SY1	11
4016	ZRE	12
4016	WHW	13
4024	WHW	14
4024	ZRE	14
4024	SY1	15
4025	WHW	16
4025	SY2	17
202	SY2	18
202	SY1	19
4017	WHW	20
4017	ZRE	20
4017	SY1	21
114	ZRE	22
114	WHW	23
4026	WHW	24
4026	SY2	25
1242	ZRE	26
1242	WJZ	27
117	WHW	28
117	WJW	29
118	WHW	30
118	SY1	31
201	WHW	32
201	SY1	33



EDGE BAND

EDGE BANDING IN LAMINATES TRANSFORMS PLAIN, EXPOSED EDGES INTO SLEEK, STYLISH ACCENTS, ELEVATING THE OVERALL LOOK AND DURABILITY OF THE FURNITURE WITH A CREATIVE FINISHING TOUCH.



TECHNICAL SPECIFICATION

PROPERTIES	SPECIFIED VALUES AS PER IS:2046-1995	KIYALAM CONFIRMES	PROPERTIES	SPECIFIED VALUES AS PER IS:2046-1995	KIYALAM CONFIRMES
Thickness	1.0 mm (±5%)	✓	Resistance to impact by small diameter ball	17.5N Min.	✓
Resistance to surface wear	>200 (revolution)	✓	Resistance to cracking	Not worse than 4	✓
Resistance to immersion in boiling water - Mass increase (%) - Thickness increase (%)	8 Max 10 Max	✓	Resistance to scratching	2N Min.	✓
Resistance to dry heat 180° C	Not worse than 4	✓	Resistance to Staining	Not worse than 5	✓
Dimensional stability at deviated temprature - Longitudinal (%) - Transverse (%)	0.5 Max. 0.9 Max.	✓	Resistance to colour change (wool standards) - In Xenon arc light - In enclosed carbon arc light	Not worse than 6 Not worse than 5	✓
Dimensional stability at 20° C - Longitudinal (%) - Transverse (%)	0.375 Max. 0.60 Max.	✓	Resistance to cigarette burns	Not worse than 3	✓
			Resistance to steam	Not worse than 4	✓
			Appearance	Should be free from foreign particles	✓

This product technical sheets gives technical relevant to the performance of the product as tested by the company. Company reserves the right to change Product composition & characterstics at any time.

Product Specifications

Product: Paper Based Decorative Laminate Sheets

Size: 2440 x 1220 mm

Thickness: 1.00 mm (± 0.1 mm)

Finish: Gloss, SF and World Class Textures

Care & Maintenance : Cleaning should be carried out with a soft moist cloth & warm soap solution. Do not use detergents containing abrasive particle or excess soda.

Highlight:

- Design made from genuine imported base paper.
- Manufactured using best quality kraft paper.
- Use of best chemical raw materials for better flexibility & durability.

Disclaimer: Customers are advised to reconfirm selected laminate when placing orders as our liability does not include claims arising from sample chip pasting error. Samples presented are indicative of color, pattern and surface finish but not of actual thicknesses. All metallic patterns series recommended for vertical application only All products from Super Hylam Private Limited are free from manufacturing defects and fit for use under normal conditions, however the product will normally deviate from manufacturing related specification. Limited warranty shall be limited only to the original buyer. It is recommended that the products must be inspected prior to installation and our liability will be limited to the extent of the cost of the products only. Our products are used for various applications without the possibility of control over the manufacturing of the finished products. The company does not assume obligations or liabilities arising from the furnishing, sale, installation or repair, use or subsequent sale of any product, to any person or entity. Company shall not be liable for any damages due to loading and unloading of sheets or any broken corner or any damages during transit of goods. No claim will be entertained for any problem in the substrate used. Bonding of laminate under high humidity, plywood with high moisture content, plywood with uneven surface, inferior quality adhesive and insufficient pressure may lead to delamination or air bubble between laminate and substrate. Company will not entertain such damages or liabilities. Do not use nail and hammer while cutting corner, Grew, Angle, and designs. Use only drill while cutting such Corner, Grew, Angle and designs.

Note:

- No Complaint will be entertainment for air bubble or any other problem due to pasting error or inferior quality adhesive used.
- No Complaint will be entertainment for mica cracking.
- Cutting a laminate sheet at an angle 90 degree leads to development of cracks in corner after pasting. Therefore it is advisable to avoid cutting at an angle of 90 degrees.

SGP
HIGH GLOSS PREMIUM

SPK
ACRYLIC SPARKLE

PR
EXTRA PREMIUM

HD
DIGITAL

SF
SUEDE FINISH

EB
EDGE BAND



Catalogue not for sale