

INSPIRED BY  
*nature*  
DRIVEN BY QUALITY

*wood & weave*

*Super Hylam*  
Driven by Quality



Scan QR for E-Catalog



super\_hylam\_laminates

Catalogue Size: 9x12inch

*Super Hylam*  
Driven by Quality

*wood & weave*



*Super Hylam*  
Driven by Quality

*Super Hylam*  
Driven by Quality



**SUPER HYLAM PRIVATE LIMITED**  
Narela Road, Kundli - 131028, Sonapat, Haryana. | 0130-221956,57,58  
www.superhylam.com | support@superhylam.com



BOOK PASTING AREA

*Super Hylam*<sup>®</sup>  
Driven by Quality

BOOK PASTING AREA

*wood & weave*

SILKEN TIMBER  
*unweaving nature's*  
CANVAS





Back Pasting

# FABRIC

COLLECTION



2348347585

Back Pasting

# FABRIC

COLLECTION





Back Pasting

# FABRIC

COLLECTION



1615513261



*Premium Fabric*  
COLLECTION

Elevate your space with laminates  
that redefine luxury.

● USED  
3001 ZW



Ignite your  
*passion*



3001 ZW | ARABIC FAB 





*Premium Fabric*  
COLLECTION

Unleash the potential of your decor with  
stunning designs



Distinct Bohemian  
*edge*



2185 ZW | GREY CROCUS WEAVE 





Impeccable design, enduring  
quality - that's our promise.



3001 | ARABIC FAB



316 | ICE MATRIX



314 | GREY CANAPA



301 | BEIGE CHECKERED





*Fabric*  
COLLECTION

Laminates that inspire, endure,  
and impress

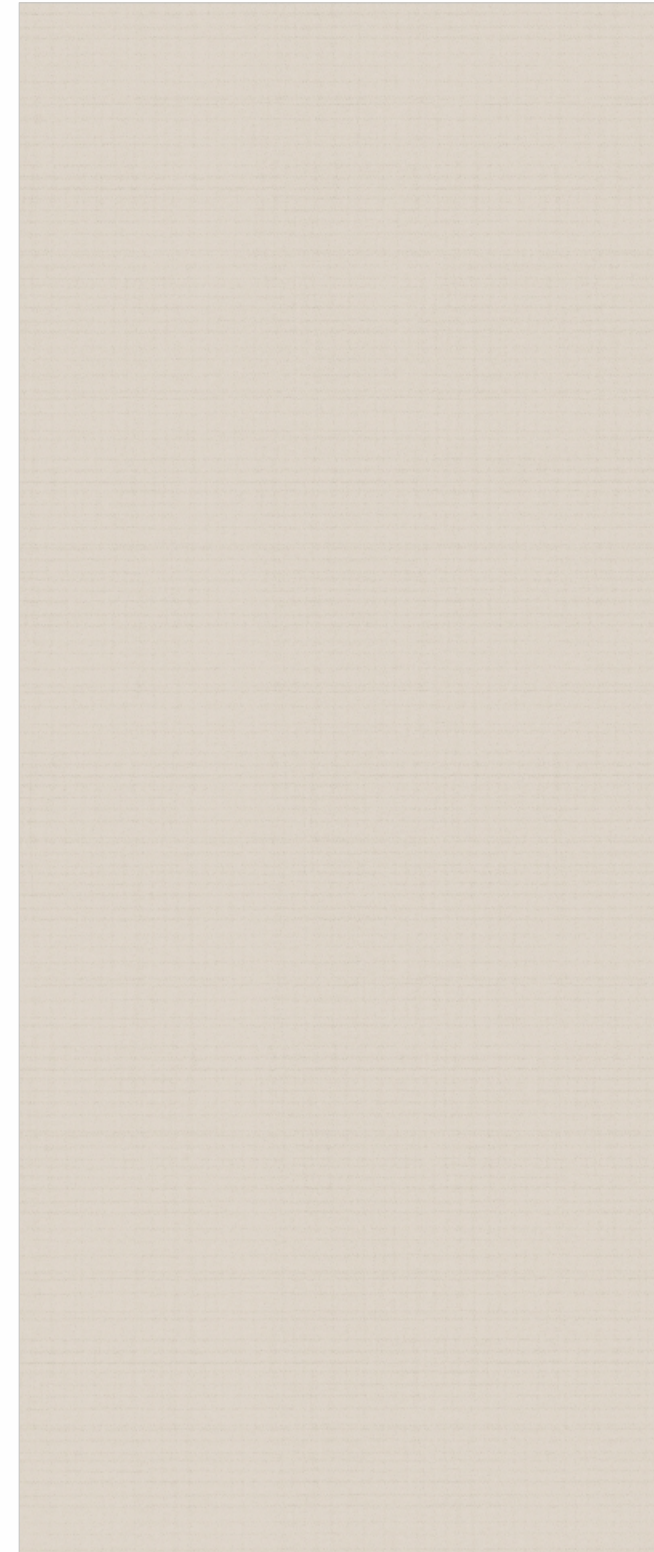
Where grandeur  
*awaits*



1086 | BURBERRY LIGHT



1085 | BURBERRY DARK



1106 | BEIGE DENIM



1107 | BROWN DENIM





*Fabric*  
COLLECTION

Bringing style and substance together  
with our premium range.



1122 | CAMBRIC FAB



3008 | GELATO FAB



1092 | DUSTY LINEN



1123 | COSMO LINEN





*Fabric*  
COLLECTION

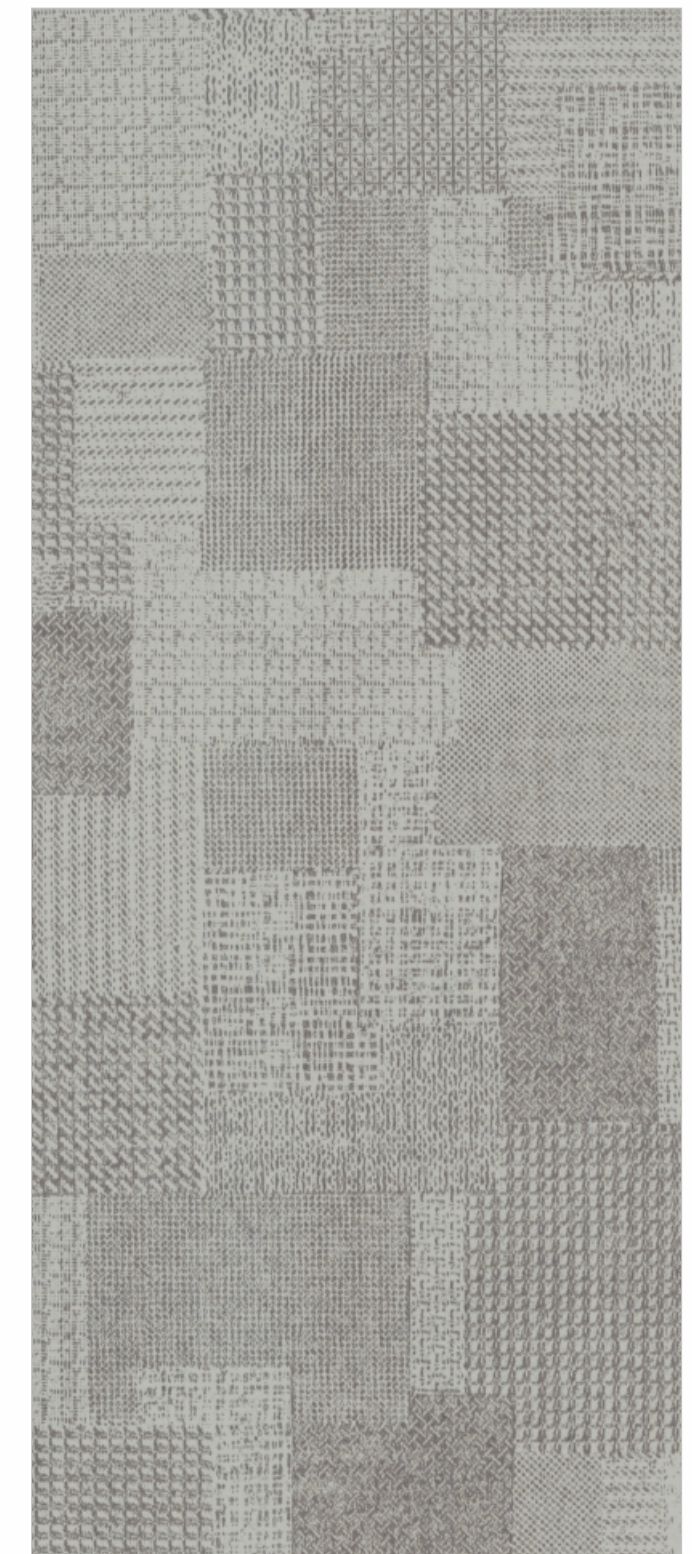
Absolute enchantment is real with our laminate collection.



2106 | PERSIAN FAB



2107 | GREY PERSIAN FAB



2089 | MESH FAB





Adhering to class and quality of high stature, here's a phenomenon of class.

Saga of *Grace*



2186 | EXOTIC FAB



2187 | GREY EXOTIC FAB



2185 | GREY CROCUS WEAVE



2184 | BROWN CROCUS WEAVE





Back Pasting



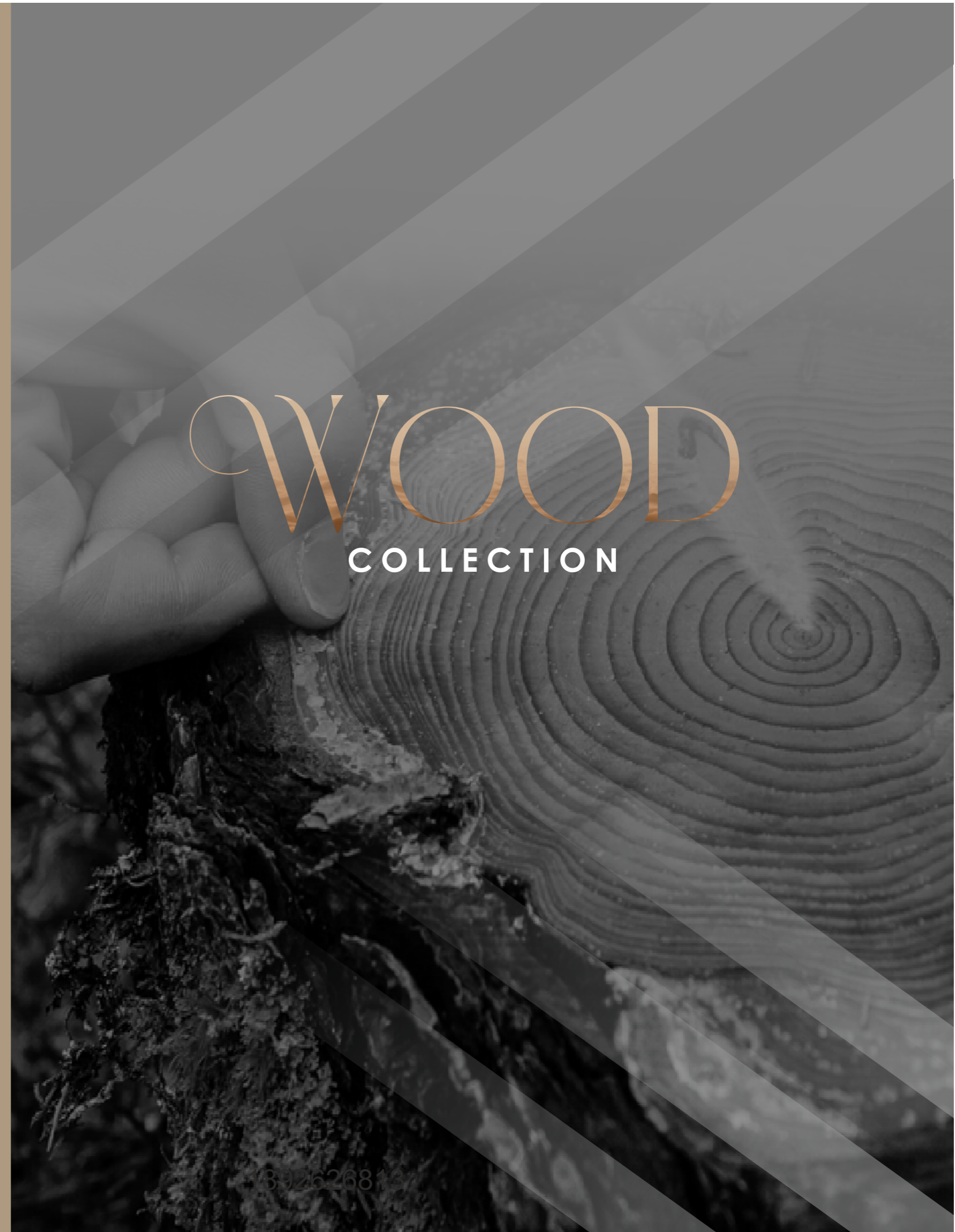
WOOD  
COLLECTION

1892626813



Back Pasting

WOOD  
COLLECTION





Back Pasting

WOOD  
COLLECTION



Premium Wood  
COLLECTION

Vision of  
*Splendor*



Versatile edge that speaks volumes  
wherever placed.



3003 | FLEXA OAK PR





*Premium Wood*  
COLLECTION

Elegant, exuberant and exemplary variety, it's all about flaunting a remarkable realm.



1103 | EARTHLY OAK 



1101 | RADIANT WOOD 



Glorious realm  
*surrounds*



2105 | SANDAL WOOD 



1104 | PEACOCK WALNUT 





Wood  
COLLECTION

All about  
*versatility*



Finesse that meets the eye, be ready for a style revolution.



3006 | IRISH WALNUT





Wood  
COLLECTION

Made to mesmerize, each design is curated to create decor wonders.

Premium designs  
*galore*



● USED  
3007



3007 | CANBERRY OAK



3005 | CELESTE WUD



3002 | KANSAS WUD





All about  
*modernity*

Brilliance redefined with each texture  
that's trending and spectacular.



2096 | FINE OAK



2097 | BRUSH OAK



1098 | EXOTIC WALNUT



3004 | DAWN OAK





Wood  
COLLECTION



1095 | NATURALE BEECH



• USED  
2047

Elegant and  
*stylish*



2047 | OXFORD WALNUT

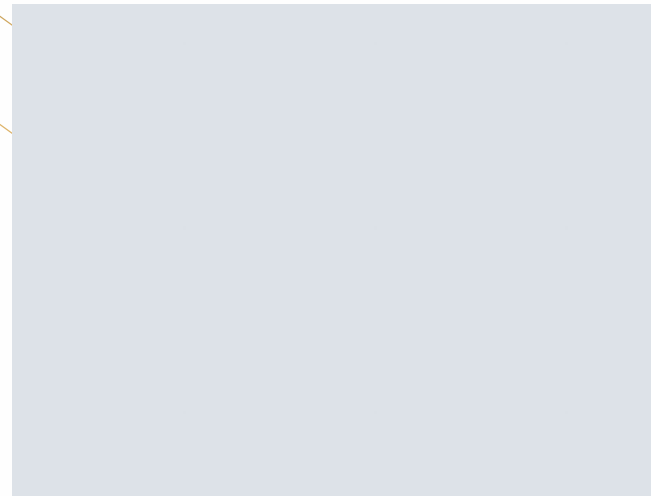


1100 | AMBER WOOD

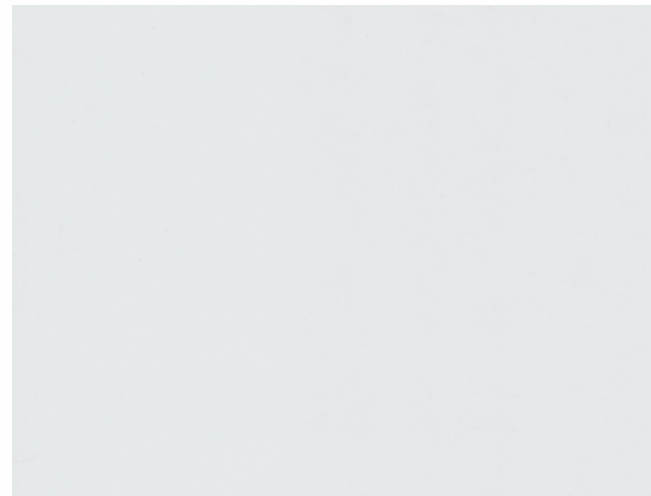




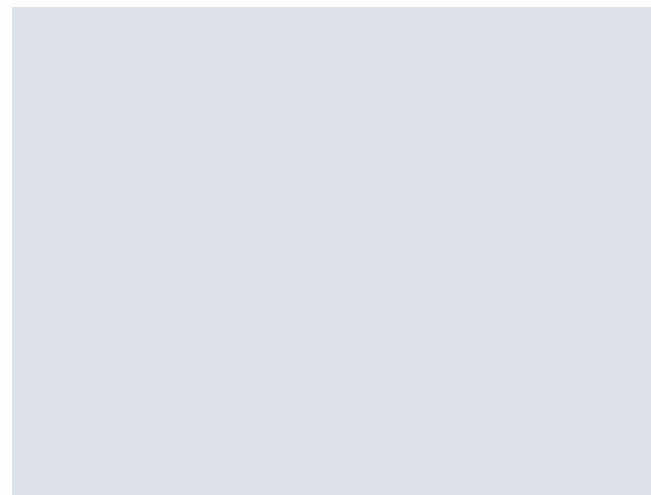
*Solid Colour*  
COLLECTION



1001 MT | NATURAL WHITE



1002 MT | FROSTY WHITE



1001 GL | NATURAL WHITE



1002 GL | FROSTY WHITE



TECHNICAL SPECIFICATION

This product technical sheets gives technical relevant to the performance of the product as tested by the company. Company reserves the right to change Product composition & characteristics at any time.

**Product Specifications**

**Product:** Paper Based Decorative Laminate Sheets

**Size:** 2440 x 1220 mm

**Finish:** Gloss, SF and World Class Textures

**Care & Maintenance :** Cleaning should be carried out with a soft moist cloth & warm soap solution. Do not use detergents containing abrasive particle or excess soda.

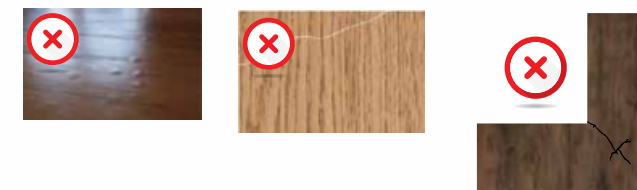
**Highlight:**

- Design made from genuine imported base paper.
- Manufactured using best quality kraft paper.
- Use of best chemical raw materials for better flexibility & durability.



**Disclaimer:** Customers are advised to reconfirm selected laminate when placing orders as our liability does not include claims arising from sample chip pasting error. Samples presented are indicative of color, pattern and surface finish but not of actual thicknesses. All metallic patterns series recommended for vertical application only. All products from Super Hylam Private Limited are free from manufacturing defects and fit for use under normal conditions, however the product will normally deviate from manufacturing related specification. Limited warranty shall be limited only to the original buyer. It is recommended that the products must be inspected prior to installation and our liability will be limited to the extent of the cost of the products only. Our products are used for various applications without the possibility of control over the manufacturing of the finished products. The company does not assume obligations or liabilities arising from the furnishing, sale, installation or repair, use or subsequent sale of any product, to any person or entity. Company shall not be liable for any damages due to loading and unloading of sheets or any broken corner or any damages during transit of goods. No claim will be entertained for any problem in the substrate used. Bonding of laminate under high humidity, plywood with high moisture content, plywood with uneven surface, inferior quality adhesive and insufficient pressure may lead to delamination or air bubble between laminate and substrate. Company will not entertain such damages or liabilities. Do not use nail and hammer while cutting corner, Grew, Angle, and designs. Use only drill while cutting such Corner, Grew, Angle and designs.

- Note:-
- No Complaint Will Be Entertained For Air Bubble Or Any Other Problem Due To Pasting Error Or Inferior Quality Adhesive Used.
  - No Complaint Will Be Entertained For Mica Cracking.
  - Cutting a laminate sheet at an angle of 90 degree leads to development of cracks in corner after pasting. Therefore It Is Advisable to avoid cutting at an angle of 90 degrees.



Designed to  
*impress*



SAMPLE CATALOGUE NOT FOR SALE